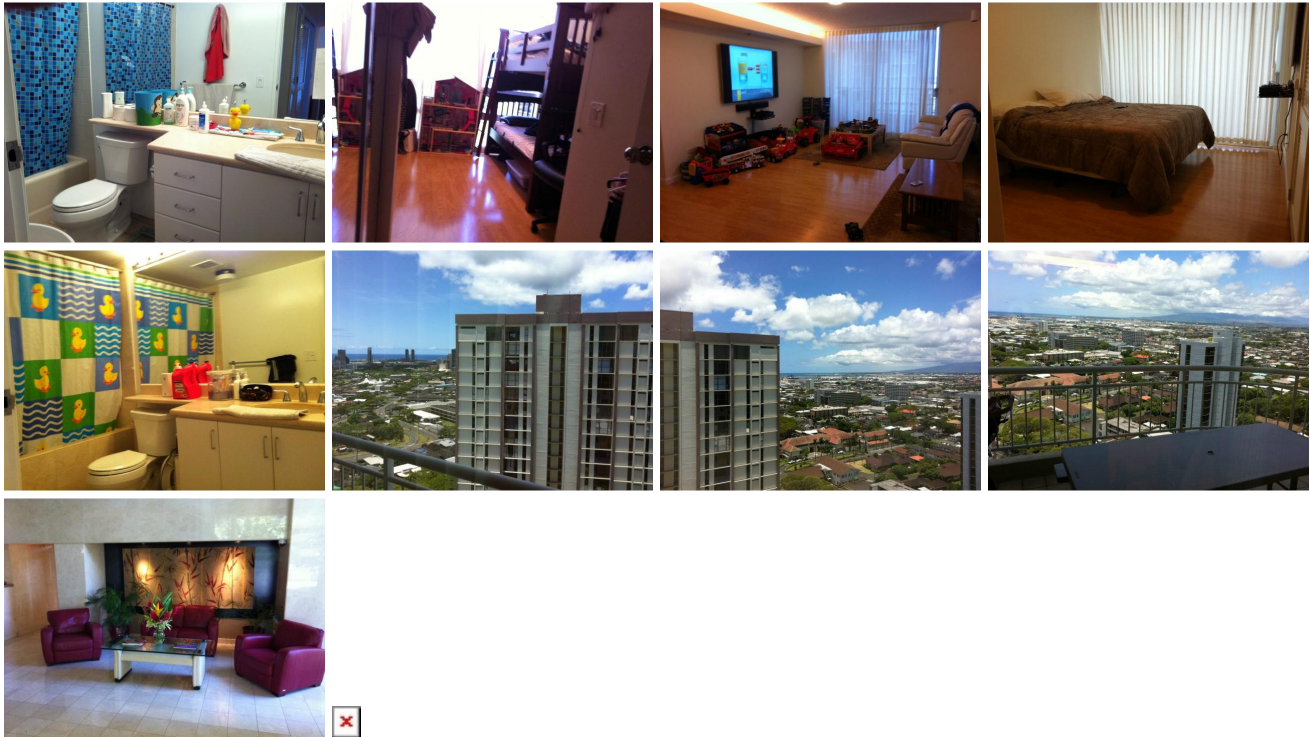


**2047 Nuuanu Avenue Unit 2303, Honolulu 96817 \*\* \$0**

Beds: <b>0</b>	MLS#: <b>201325154, FS</b>	Year Built: <b>1991</b>
Bath: <b>0/0</b>	Status: <b>Incoming</b>	Remodeled:
Living Sq. Ft.: <b>0</b>	List Date & DOM: <b>11-30--0001 &amp;</b>	Total Parking: <b>0</b>
Land Sq. Ft.: <b>40,467</b>	Condition:	<a href="#">Assessed Value</a>
Lanai Sq. Ft.: <b>0</b>	Frontage:	Building: <b>\$446,200</b>
Sq. Ft. Other: <b>0</b>	Tax/Year: <b>\$0/2012</b>	Land: <b>\$50,000</b>
Total Sq. Ft. <b>0</b>	Neighborhood: <b>Nuuanu-lower</b>	Total: <b>\$496,200</b>
Maint./Assoc. <b>\$0 / \$0</b>	<a href="#">Flood Zone</a> : - <b>Tool</b>	Stories / CPR: / <b>No</b>
Parking:	Frontage:	View:
<a href="#">Zoning</a> : <b>13 - A-3 High Density Apartment</b>		

**Public Remarks:** Sale Conditions: Schools: , , \* [Request Showing](#), [Photos](#), [History](#), [Maps](#), [Deed](#), [Watch List](#), [Tax Info](#)



Address	Price	Bd & Bth	Living / Avg.	Land   Avg.	Lanai	Occ.	FL	DOM
<a href="#">2047 Nuuanu Avenue 2303</a>	<a href="#">\$0</a>	0 & 0/0	0   \$nan	40,467   \$0	0	0%	0	0

Address	Tax   Maint.   Ass.	Assessed Land	Assessed Building	Assessed Total	Ratio	Year & Remodeled
<a href="#">2047 Nuuanu Avenue 2303</a>	\$0   \$0   \$0	\$50,000	\$446,200	\$496,200	0%	1991 & NA

[2047 Nuuanu Avenue 2303](#) - MLS#: [201325154](#) - Region: Metro Neighborhood: Nuuanu-lower Condition: Parking: Total Parking: 0 View: Frontage: Pool: Zoning: 13 - A-3 High Density Apartment Sale Conditions: Schools: , , \* [Request Showing](#), [Photos](#), [History](#), [Maps](#), [Deed](#), [Watch List](#), [Tax Info](#)

DOM = Days on Market, Occ. = Occupancy, FL = Floor Number