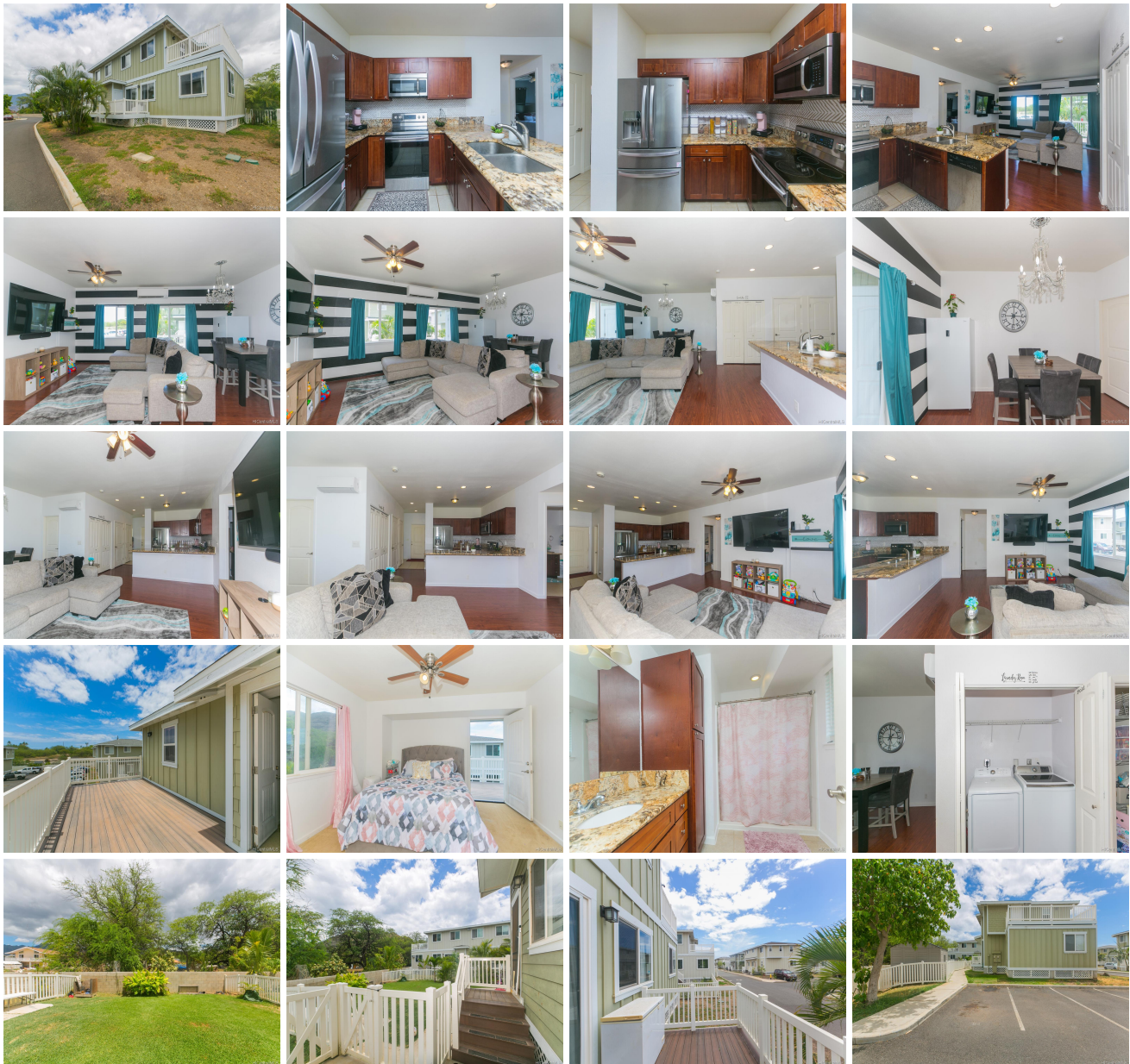


Mali Beach Place 87-176 Maipalaoa Road Unit P37, Waianae 96792 * Mali Beach Place *

\$560,000 * Originally \$595,000

Beds: 4	MLS#: 202214185, FS	Year Built: 2012
Bath: 3/0	Status: Active Under Contract	Remodeled:
Living Sq. Ft.: 1,500	List Date & DOM: 08-15-2022 & 183	Total Parking: 3
Land Sq. Ft.: 4,508	Condition: Above Average	Assessed Value
Lanai Sq. Ft.: 89	Frontage:	Building: \$388,100
Sq. Ft. Other: 0	Tax/Year: \$123/2022	Land: \$132,900
Total Sq. Ft. 1,589	Neighborhood: Mali	Total: \$521,000
Maint./Assoc. \$602 / \$0	Flood Zone : Zone X - Tool	Stories / CPR: / No
Parking: Assigned, Guest, Open - 3+	Frontage:	
Zoning : 05 - R-5 Residential District	View: Mountain	

Public Remarks: Back on the Market! Under the Market Value! Appraisal Report and Condo Doc done! Waiting for Final Approval from the lien holder- The largest yard in the project! 3 parking stalls, the 3rd parking space can be used for your guest or your 3rd car. A former Developer's Model unit has a HUGE PRIVATE YARD and a spacious 4bedrooms, 3 Bathrooms split-level town home with one bedroom on the main floor. The other 3 bedrooms and two bathrooms are on the 2nd level including a large open lanai off the master suite with views of the Waianae Mountain Range. A large backyard for your pet, and children to play together. This home has three assigned parking spaces and guest parking. A community recreation center includes a pool, whirlpool and BBQ. Walking distance to the beach. Close to the ocean- Conveniently located near Ko'Olina Resort, beaches and Kapolei Shopping Center. Must see before it is sold! SOLD AS IS- **Sale Conditions:** Short Sale **Schools:** , , * [Request Showing](#), [Photos](#), [History](#), [Maps](#), [Deed](#), [Watch List](#), [Tax Info](#)





Address	Price	Bd & Bth	Living / Avg.	Land Avg.	Lanai	Occ.	FL	DOM
87-176 Maipalaoa Road P37	\$560,000	4 & 3/0	1,500 \$373	4,508 \$124	89	80%	1	183

Address	Tax Maint. Ass.	Assessed Land	Assessed Building	Assessed Total	Ratio	Year & Remodeled
87-176 Maipalaoa Road P37	\$123 \$602 \$0	\$132,900	\$388,100	\$521,000	107%	2012 & NA

[87-176 Maipalaoa Road P37](#) - MLS#: [202214185](#) - Original price was \$595,000 - Back on the Market! Under the Market Value! Appraisal Report and Condo Doc done! Waiting for Final Approval from the lien holder- The largest yard in the project! 3 parking stalls, the 3rd parking space can be used for your guest or your 3rd car. A former Developer's Model unit has a HUGE PRIVATE YARD and a spacious 4bedrooms, 3 Bathrooms split-level town home with one bedroom on the main floor. The other 3 bedrooms and two bathrooms are on the 2nd level including a large open lanai off the master suite with views of the Waianae Mountain Range. A large backyard for your pet, and children to play together. This home has three assigned parking spaces and guest parking. A community recreation center includes a pool, whirlpool and BBQ. Walking distance to the beach. Close to the ocean- Conveniently located near Ko'Olina Resort, beaches and Kapolei Shopping Center. Must see before it is sold! SOLD AS IS- **Region:** Leeward **Neighborhood:** Mailli **Condition:** Above Average **Parking:** Assigned, Guest, Open - 3+ **Total Parking:** 3 **View:** Mountain **Frontage:** **Pool:** **Zoning:** 05 - R-5 Residential District **Sale Conditions:** Short Sale **Schools:** , , * [Request Showing](#), [Photos](#), [History](#), [Maps](#), [Deed](#), [Watch List](#), [Tax Info](#)

DOM = Days on Market, Occ. = Occupancy, FL = Floor Number