

**[Maili Beach Place 87-176 Maipalaoa Road Unit P37, Waianae 96792](#) \* \$560,000 \* Originally**

**\$595,000**

Beds: 4

MLS#: [202214185](#), FS

Year Built: 2012

Bath: 3/0

Status: **Active Under Contract**

Remodeled:

Living Sq. Ft.: **1,500**

List Date & DOM: **08-15-2022 & 183**

Total Parking: **3**

Land Sq. Ft.: **4,508**

Condition: **Above Average**

[Assessed Value](#)

Lanai Sq. Ft.: **89**

Frontage:

Building: **\$388,100**

Sq. Ft. Other: **0**

Tax/Year: **\$123/2022**

Land: **\$132,900**

Total Sq. Ft. **1,589**

Neighborhood: **Maili**

Total: **\$521,000**

Maint./Assoc. **\$602 / \$0**

[Flood Zone](#): **Zone X - Tool**

Stories / CPR: / **No**

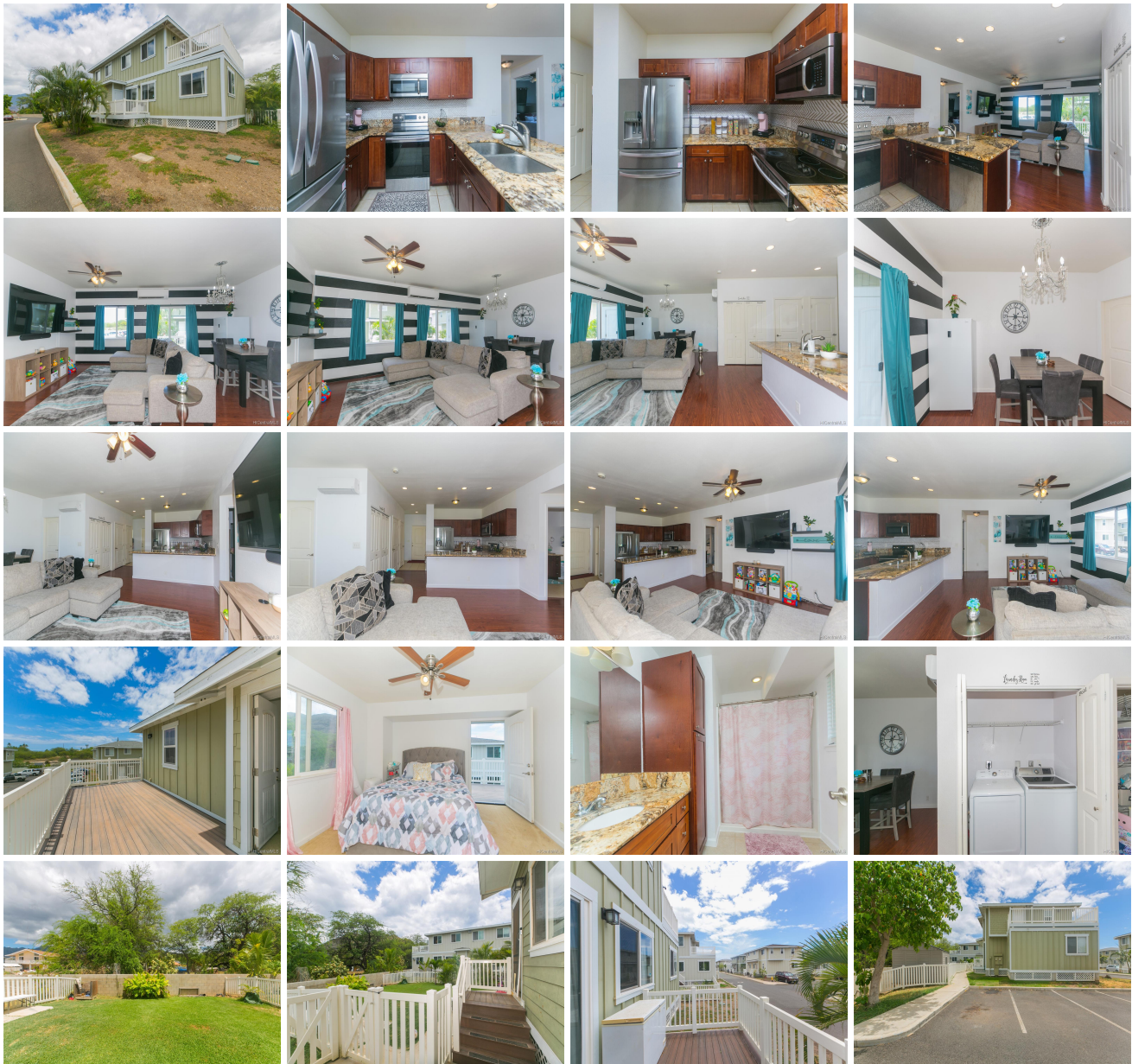
Parking: **Assigned, Guest, Open - 3+**

Frontage:

[Zoning](#): **05 - R-5 Residential District**

View: **Mountain**

**Public Remarks:** Back on the Market! Under the Market Value! Appraisal Report and Condo Doc done! Waiting for Final Approval from the lien holder- The largest yard in the project! 3 parking stalls, the 3rd parking space can be used for your guest or your 3rd car. A former Developer's Model unit has a HUGE PRIVATE YARD and a spacious 4bedrooms, 3 Bathrooms split-level town home with one bedroom on the main floor. The other 3 bedrooms and two bathrooms are on the 2nd level including a large open lanai off the master suite with views of the Waianae Mountain Range. A large backyard for your pet, and children to play together. This home has three assigned parking spaces and guest parking. A community recreation center includes a pool, whirlpool and BBQ. Walking distance to the beach. Close to the ocean- Conveniently located near Ko'Olina Resort, beaches and Kapolei Shopping Center. Must see before it is sold! SOLD AS IS- **Sale Conditions:** Short Sale **Schools:** , , \* [Request Showing](#), [Photos](#), [History](#), [Maps](#), [Deed](#), [Watch List](#), [Tax Info](#)





Address	Price	Bd & Bth	Living / Avg.	Land   Avg.	DOM
<a href="#">87-176 Maipalaoa Road P37</a>	<b>\$560,000</b>	4 & 3/0	1,500   \$373	4,508   \$124	183

Address	Tax   Maint.   Ass.	Assessed Land	Assessed Building	Assessed Total	Ratio	Year & Remodeled
<a href="#">87-176 Maipalaoa Road P37</a>	\$123   \$602   \$0	\$132,900	\$388,100	\$521,000	107%	2012 & NA

[87-176 Maipalaoa Road P37](#) - MLS#: [202214185](#) - Original price was \$595,000 - Back on the Market! Under the Market Value! Appraisal Report and Condo Doc done! Waiting for Final Approval from the lien holder- The largest yard in the project! 3 parking stalls, the 3rd parking space can be used for your guest or your 3rd car. A former Developer's Model unit has a HUGE PRIVATE YARD and a spacious 4bedrooms, 3 Bathrooms split-level town home with one bedroom on the main floor. The other 3 bedrooms and two bathrooms are on the 2nd level including a large open lanai off the master suite with views of the Waianae Mountain Range. A large backyard for your pet, and children to play together. This home has three assigned parking spaces and guest parking. A community recreation center includes a pool, whirlpool and BBQ. Walking distance to the beach. Close to the ocean- Conveniently located near Ko'Olina Resort, beaches and Kapolei Shopping Center. Must see before it is sold! SOLD AS IS- **Region:** Leeward **Neighborhood:** Mailli **Condition:** Above Average **Parking:** Assigned, Guest, Open - 3+ **Total Parking:** 3 **View:** Mountain **Frontage:** **Pool:** **Zoning:** 05 - R-5 Residential District **Sale Conditions:** Short Sale **Schools:** , , \* [Request Showing](#), [Photos](#), [History](#), [Maps](#), [Deed](#), [Watch List](#), [Tax Info](#)

DOM = Days on Market