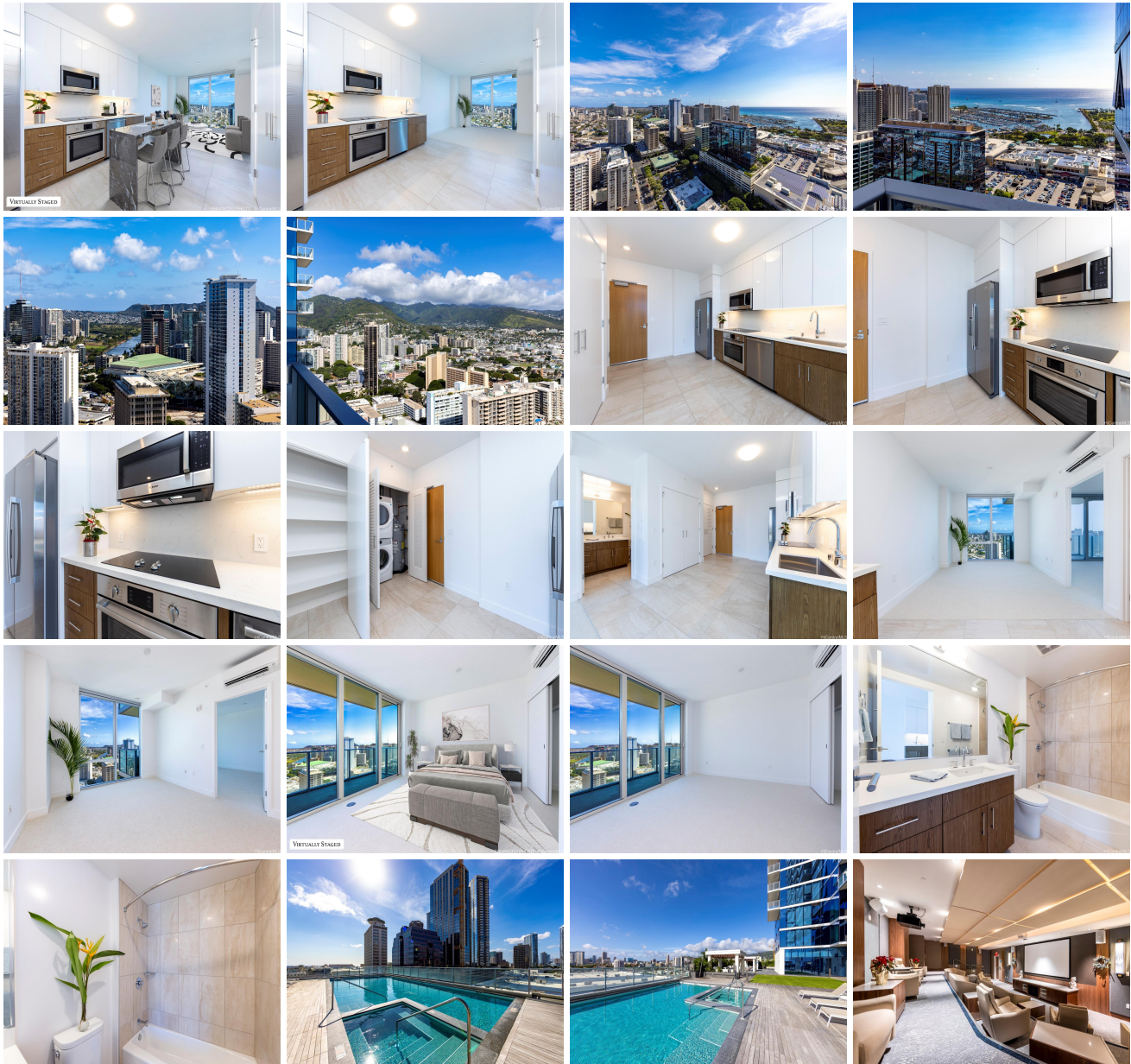


Azure Ala Moana 629 Keeaumoku Street Unit 3603, Honolulu 96814 * Azure Ala Moana *

\$888,000 * Originally \$900,000

Beds: 1	MLS#: 202224968, FS	Year Built: 2021
Bath: 1/0	Status: Active	Remodeled:
Living Sq. Ft.: 578	List Date & DOM: 11-29-2022 & 596	Total Parking: 1
Land Sq. Ft.: 0	Condition: Excellent	Assessed Value
Lanai Sq. Ft.: 0	Frontage: Other	Building: \$742,300
Sq. Ft. Other: 0	Tax/Year: \$235/2024	Land: \$23,700
Total Sq. Ft. 578	Neighborhood: Holiday Mart	Total: \$766,000
Maint./Assoc. \$608 / \$0	Flood Zone : Zone AE - Tool	Stories / CPR: 21+ / No
Parking: Assigned, Covered - 1, Guest	Frontage: Other	
Zoning : 33 - BMX-3 Community Business M	View: City, Ocean	

Public Remarks: Situated in the heart of Honolulu, welcome home to Azure Ala Moana, a newly-constructed luxury condominium residence completed at the end of 2021. This high floor 1 bedroom, 1 bath unit is positioned facing east & enjoys 180-degree panoramas stretching from the tranquil Koolau Mountains, to partial Diamond Head & Ala Wai Canal views, all the way to the Pacific Ocean, Ala Wai Harbor, & morning sunrises. Included with the unit is 1 parking stall, plus an ADDITIONAL WALK-IN STORAGE unit that was previously purchased separately. This superb location sits just one block from Ala Moana Center & just a few blocks from Ala Moana Beach Park, putting dining, shopping, entertainment options, beach activities & more just minutes away. Resort-style amenities include an extra-large pool & hot tub, exercise gym, multiple barbecue cabanas, a large movie theater, multiple meeting, entertainment, & lounge spaces. Join Honolulu's sought-after "work, play, live" lifestyle at Azure Ala Moana. Listing includes enhanced, virtually staged photos. Photos #5, 6, 7 are zoomed-in photos. **Sale Conditions:** None **Schools:** [Kaahumanu](#), [Stevenson](#), [Mckinley](#) * [Request Showing](#), [Photos](#), [History](#), [Maps](#), [Deed](#), [Watch List](#), [Tax Info](#)





Address	Price	Bd & Bth	Living / Avg.	Land Avg.	Lanai	Occ.	FL	DOM
629 Keeaumoku Street 3603	\$888,000	1 & 1/0	578 \$1,536	0 \$inf	0	72%	36	596

Address	Tax Maint. Ass.	Assessed Land	Assessed Building	Assessed Total	Ratio	Year & Remodeled
629 Keeaumoku Street 3603	\$235 \$608 \$0	\$23,700	\$742,300	\$766,000	116%	2021 & NA

[629 Keeaumoku Street 3603](#) - MLS#: [202224968](#) - Original price was \$900,000 - Situated in the heart of Honolulu, welcome home to Azure Ala Moana, a newly-constructed luxury condominium residence completed at the end of 2021. This high floor 1 bedroom, 1 bath unit is positioned facing east & enjoys 180-degree panoramas stretching from the tranquil Koolau Mountains, to partial Diamond Head & Ala Wai Canal views, all the way to the Pacific Ocean, Ala Wai Harbor, & morning sunrises. Included with the unit is 1 parking stall, plus an ADDITIONAL WALK-IN STORAGE unit that was previously purchased separately. This superb location sits just one block from Ala Moana Center & just a few blocks from Ala Moana Beach Park, putting dining, shopping, entertainment options, beach activities & more just minutes away. Resort-style amenities include an extra-large pool & hot tub, exercise gym, multiple barbecue cabanas, a large movie theater, multiple meeting, entertainment, & lounge spaces. Join Honolulu's sought-after "work, play, live" lifestyle at Azure Ala Moana. Listing includes enhanced, virtually staged photos. Photos #5, 6, 7 are zoomed-in photos. **Region:** Metro **Neighborhood:** Holiday Mart **Condition:** Excellent **Parking:** Assigned, Covered - 1, Guest **Total Parking:** 1 **View:** City, Ocean **Frontage:** Other **Pool:** **Zoning:** 33 - BMX-3 Community Business M **Sale Conditions:** None **Schools:** [Kaahumanu](#), [Stevenson](#), [Mckinley](#) * [Request Showing](#), [Photos](#), [History](#), [Maps](#), [Deed](#), [Watch List](#), [Tax Info](#)

DOM = Days on Market, Occ. = Occupancy, FL = Floor Number