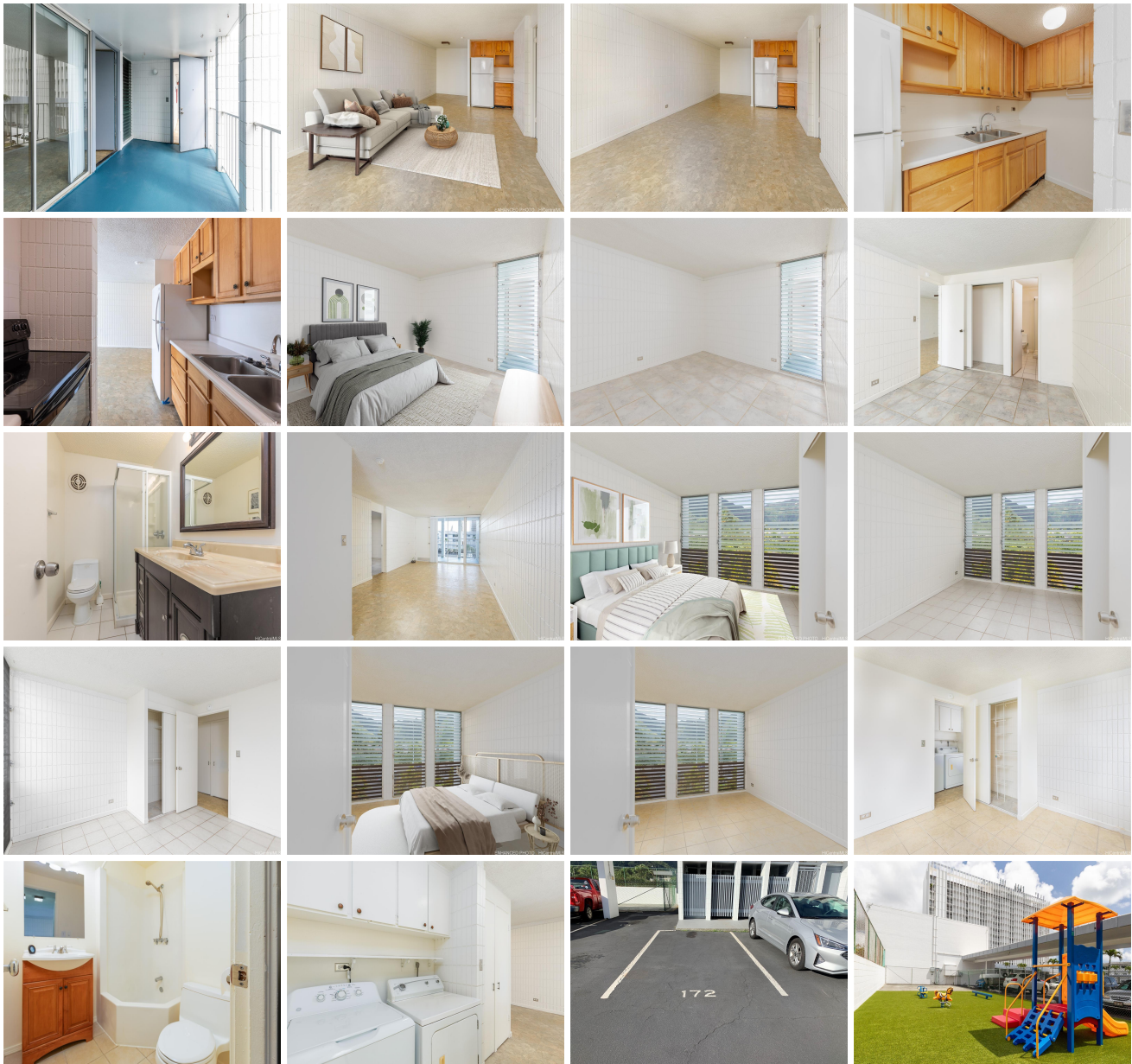


Haiku Hale 46-283 Kahuhipa Street Unit B310, Kaneohe 96744 * Haiku Hale * \$480,000 *

Originally \$500,000

Beds: 3	MLS#: 202310805, FS	Year Built: 1976
Bath: 2/0	Status: Active	Remodeled:
Living Sq. Ft.: 960	List Date & DOM: 05-15-2023 & 425	Total Parking: 1
Land Sq. Ft.: 108,987	Condition: Average	Assessed Value
Lanai Sq. Ft.: 140	Frontage: Other	Building: \$424,000
Sq. Ft. Other: 0	Tax/Year: \$140/2023	Land: \$55,000
Total Sq. Ft. 1,100	Neighborhood: Windward Estates	Total: \$357,100
Maint./Assoc. \$578 / \$0	Flood Zone : Zone D - Tool	Stories / CPR: Three+ / No
Parking: Assigned, Guest, Open - 1	Frontage: Other	
Zoning : 12 - A-2 Medium Density Apartme	View: Mountain, Sunrise	

Public Remarks: Price reduction! Kaneohe - Haiku Hale, super convenient location...rarely available 3 bedroom, 2 full bath unit on top floor of building B, one reserved open parking, use of 3 guest stalls, plus street parking. Pet friendly building/verify specifics with AOA, unique floor plan where you enter through front covered spacious lanai. Unit has laminate, ceramic, and linoleum flooring throughout (no carpet), full size/side by side washer/dryer in unit, & comes w/unit specific storage space/ground floor. Complex has fully fenced playground area, & storage area for bicycle/SUP/kayaks/motorcycles, heated pool, air conditioned gym with amazing Kaneohe Bay/Ko'olau views. Easy access to city bus stops, a few blocks Windward Mall, Target, Safeway, private and public schools, w/sidewalks to and from for miles, minutes to gorgeous beaches, approx. 8 miles to Kaneohe Marine Corp. base, 13 miles to JBPH, 25 miles to Schofield. Easy to see. Open House Sunday 7/7/24. NEW LISTING!!!! Unit was on hold until the tenants moved out. **Sale Conditions:** None **Schools:** [Heeia](#), [King](#), [Castle](#) * [Request Showing](#), [Photos](#), [History](#), [Maps](#), [Deed](#), [Watch List](#), [Tax Info](#)





Address	Price	Bd & Bth	Living / Avg.	Land Avg.	Lanai	Occ.	FL	DOM
46-283 Kahuhipa Street B310	\$480,000	3 & 2/0	960 \$500	108,987 \$4	140	59%	3	425

Address	Tax Maint. Ass.	Assessed Land	Assessed Building	Assessed Total	Ratio	Year & Remodeled
46-283 Kahuhipa Street B310	\$140 \$578 \$0	\$55,000	\$424,000	\$357,100	134%	1976 & NA

[46-283 Kahuhipa Street B310](#) - MLS#: [202310805](#) - Original price was \$500,000 - Price reduction! Kaneohe - Haiku Hale, super convenient location...rarely available 3 bedroom, 2 full bath unit on top floor of building B, one reserved open parking, use of 3 guest stalls, plus street parking. Pet friendly building/verify specifics with AOA, unique floor plan where you enter through front covered spacious lanai. Unit has laminate, ceramic, and linoleum flooring throughout (no carpet), full size/side by side washer/dryer in unit, & comes w/unit specific storage space/ground floor. Complex has fully fenced playground area, & storage area for bicycle/SUP/kayaks/motorcycles, heated pool, air conditioned gym with amazing Kaneohe Bay/Ko'olau views. Easy access to city bus stops, a few blocks Windward Mall, Target, Safeway, private and public schools, w/sidewalks to and from for miles, minutes to gorgeous beaches, approx. 8 miles to Kaneohe Marine Corp. base, 13 miles to JBPH, 25 miles to Schofield. Easy to see. Open House Sunday 7/7/24. NEW LISTING!!!! Unit was on hold until the tenants moved out.

Region: Kaneohe **Neighborhood:** Windward Estates **Condition:** Average **Parking:** Assigned, Guest, Open - 1 **Total Parking:** 1 **View:** Mountain, Sunrise **Frontage:** Other **Pool:** **Zoning:** 12 - A-2 Medium Density Apartme **Sale Conditions:** None **Schools:** [Heeia](#), [King](#), [Castle](#) * [Request Showing](#), [Photos](#), [History](#), [Maps](#), [Deed](#), [Watch List](#), [Tax Info](#)

DOM = Days on Market, Occ. = Occupancy, FL = Floor Number