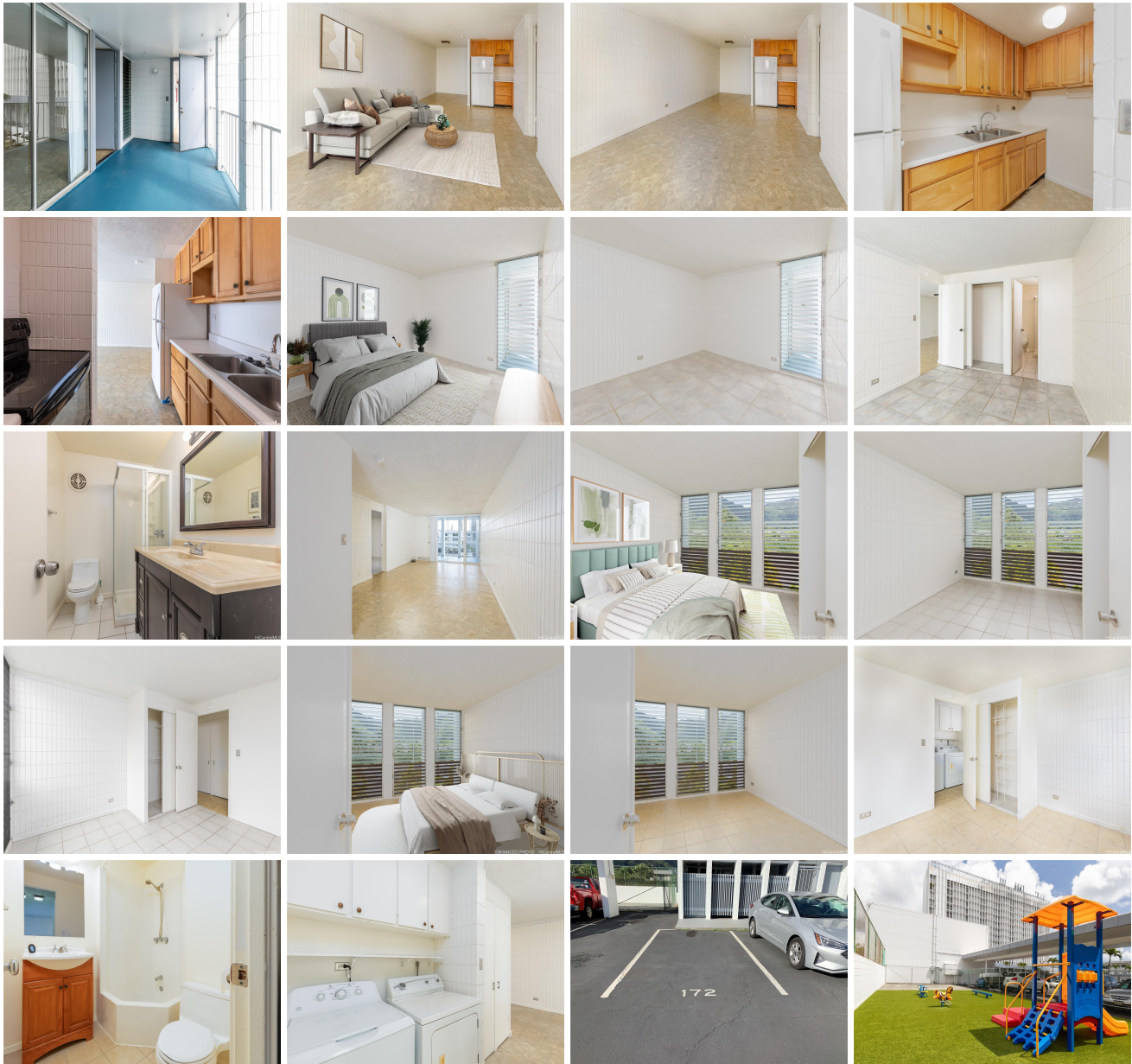


## **Haiku Hale 46-283 Kahuhipa Street Unit B310, Kaneohe 96744 \* \$500,000**

Beds: <b>3</b>	MLS#: <b><u>202310805</u>, FS</b>	Year Built: <b>1976</b>
Bath: <b>2/0</b>	Status: <b>Active</b>	Remodeled:
Living Sq. Ft.: <b>960</b>	List Date & DOM: <b>05-15-2023 &amp; 408</b>	Total Parking: <b>1</b>
Land Sq. Ft.: <b>108,987</b>	Condition: <b>Average</b>	<a href="#">Assessed Value</a>
Lanai Sq. Ft.: <b>140</b>	Frontage: <b>Other</b>	Building: <b>\$424,000</b>
Sq. Ft. Other: <b>0</b>	Tax/Year: <b>\$140/2023</b>	Land: <b>\$55,000</b>
Total Sq. Ft. <b>1,100</b>	Neighborhood: <b>Windward Estates</b>	Total: <b>\$357,100</b>
Maint./Assoc. <b>\$578 / \$0</b>	<a href="#">Flood Zone</a> : <b>Zone D - Tool</b>	Stories / CPR: <b>Three+ / No</b>
Parking: <b>Assigned, Guest, Open - 1</b>	Frontage: <b>Other</b>	
<a href="#">Zoning</a> : <b>12 - A-2 Medium Density Apartme</b>	View: <b>Mountain, Sunrise</b>	

**Public Remarks:** Kaneohe - Haiku Hale, super convenient location...rarely available 3 bedroom, 2 full bath unit on top floor of building B, one reserved open parking, use of 3 guest stalls, plus street parking. Pet friendly building/verify specifics with AOA, unique floor plan where you enter through front covered spacious lanai. Unit has laminate, ceramic, and linoleum flooring throughout (no carpet), full size/side by side washer/dryer in unit, & comes w/unit specific storage space/ground floor. Complex has fully fenced playground area, & storage area for bicycle/SUP/kayaks/motorcycles, heated pool, air conditioned gym with amazing Kaneohe Bay/Ko'olau views. Easy access to city bus stops, a few blocks Windward Mall, Target, Safeway, private and public schools, w/sidewalks to and from for miles, minutes to gorgeous beaches, approx. 8 miles to Kaneohe Marine Corp. base, 13 miles to JBPH, 25 miles to Schofield. Easy to see. First Open House Sunday 6/16/24. **NEW LISTING!!!!** Unit was on hold until the tenants moved out. **Sale Conditions:** None **Schools:** [Heeia](#), [King](#), [Castle](#) \* [Request Showing](#), [Photos](#), [History](#), [Maps](#), [Deed](#), [Watch List](#), [Tax Info](#)





Address	Price	Bd & Bth	Living / Avg.	Land   Avg.	DOM
<a href="#">46-283 Kahuhipa Street B310</a>	<a href="#">\$500,000</a>	3 & 2/0	960   \$521	108,987   \$5	408

Address	Tax   Maint.   Ass.	Assessed Land	Assessed Building	Assessed Total	Ratio	Year & Remodeled
<a href="#">46-283 Kahuhipa Street B310</a>	\$140   \$578   \$0	\$55,000	\$424,000	\$357,100	140%	1976 & NA

[46-283 Kahuhipa Street B310](#) - MLS#: [202310805](#) - Kaneohe - Haiku Hale, super convenient location...rarely available 3 bedroom, 2 full bath unit on top floor of building B, one reserved open parking, use of 3 guest stalls, plus street parking. Pet friendly building/verify specifics with AOA, unique floor plan where you enter through front covered spacious lanai. Unit has laminate, ceramic, and linoleum flooring throughout (no carpet), full size/side by side washer/dryer in unit, & comes w/unit specific storage space/ground floor. Complex has fully fenced playground area, & storage area for bicycle/SUP/kayaks/motorcycles, heated pool, air conditioned gym with amazing Kaneohe Bay/Ko'olau views. Easy access to city bus stops, a few blocks Windward Mall, Target, Safeway, private and public schools, w/sidewalks to and from for miles, minutes to gorgeous beaches, approx. 8 miles to Kaneohe Marine Corp. base, 13 miles to JBPH, 25 miles to Schofield. Easy to see. First Open House Sunday 6/16/24. NEW LISTING!!!! Unit was on hold until the tenants moved out. **Region:** Kaneohe **Neighborhood:** Windward Estates **Condition:** Average **Parking:** Assigned, Guest, Open - 1 **Total Parking:** 1 **View:** Mountain, Sunrise **Frontage:** Other **Pool:** **Zoning:** 12 - A-2 Medium Density Apartme **Sale Conditions:** None **Schools:** [Heeia](#), [King](#), [Castle](#) \* [Request Showing](#), [Photos](#), [History](#), [Maps](#), [Deed](#), [Watch List](#), [Tax Info](#)

DOM = Days on Market