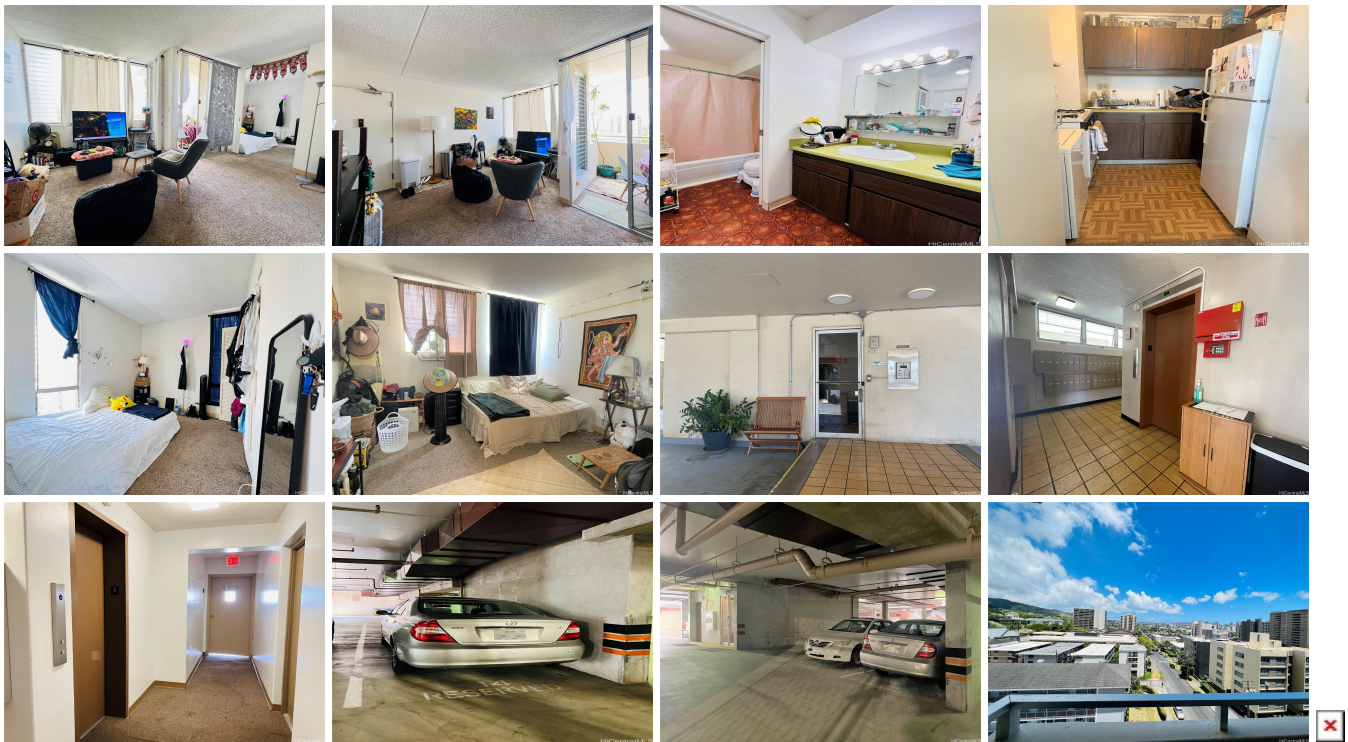


Pulelehua 1624 Dole Street Unit 804, Honolulu 96822 * \$390,000 * Originally \$410,000

| | | |
|---|---|---------------------------------|
| Beds: 2 | MLS#: 202311695, FS | Year Built: 1975 |
| Bath: 1/0 | Status: Active | Remodeled: |
| Living Sq. Ft.: 599 | List Date & DOM: 05-31-2023 & 412 | Total Parking: 1 |
| Land Sq. Ft.: 12,415 | Condition: Above Average | Assessed Value |
| Lanai Sq. Ft.: 50 | Frontage: Other | Building: \$332,100 |
| Sq. Ft. Other: 0 | Tax/Year: \$108/2024 | Land: \$64,600 |
| Total Sq. Ft. 649 | Neighborhood: Punahou | Total: \$396,700 |
| Maint./Assoc. \$933 / \$0 | Flood Zone : Zone X - Tool | Stories / CPR: 8-14 / No |
| Parking: Covered - 1, Guest | Frontage: Other | |
| Zoning : 13 - A-3 High Density Apartment | View: City, Mountain | |

Public Remarks: 2 Bed 1 Bath condo with a covered lanai at Pulelehua in Punahou! 1 covered parking stall included. Highly desired stacked washer dryer in the unit. Partial Diamond Head and City views on the cool side of the building. Maintenance fee includes electricity, gas, water, and sewer. Close to proximity to Punahou & Maryknoll School. Located near H-1 Freeway on and off ramps, Kapiolani Hospital, and UH Manoa. **Sale Conditions:** None **Schools:** , , * [Request Showing](#), [Photos](#), [History](#), [Maps](#), [Deed](#), [Watch List](#), [Tax Info](#)



| Address | Price | Bd & Bth | Living / Avg. | Land Avg. | DOM |
|--------------------------------------|------------------|----------|---------------|---------------|-----|
| 1624 Dole Street 804 | \$390,000 | 2 & 1/0 | 599 \$651 | 12,415 \$31 | 412 |

| Address | Tax Maint. Ass. | Assessed Land | Assessed Building | Assessed Total | Ratio | Year & Remodeled |
|--------------------------------------|---------------------|---------------|-------------------|----------------|-------|------------------|
| 1624 Dole Street 804 | \$108 \$933 \$0 | \$64,600 | \$332,100 | \$396,700 | 98% | 1975 & NA |

[1624 Dole Street 804](#) - MLS#: [202311695](#) - Original price was \$410,000 - 2 Bed 1 Bath condo with a covered lanai at Pulelehua in Punahou! 1 covered parking stall included. Highly desired stacked washer dryer in the unit. Partial Diamond Head and City views on the cool side of the building. Maintenance fee includes electricity, gas, water, and sewer. Close to proximity to Punahou & Maryknoll School. Located near H-1 Freeway on and off ramps, Kapiolani Hospital, and UH Manoa. **Region:** Metro **Neighborhood:** Punahou **Condition:** Above Average **Parking:** Covered - 1, Guest **Total Parking:** 1 **View:** City, Mountain **Frontage:** Other **Pool:** **Zoning:** 13 - A-3 High Density Apartment **Sale Conditions:** None **Schools:** , , * [Request Showing](#), [Photos](#), [History](#), [Maps](#), [Deed](#), [Watch List](#), [Tax Info](#)

DOM = Days on Market