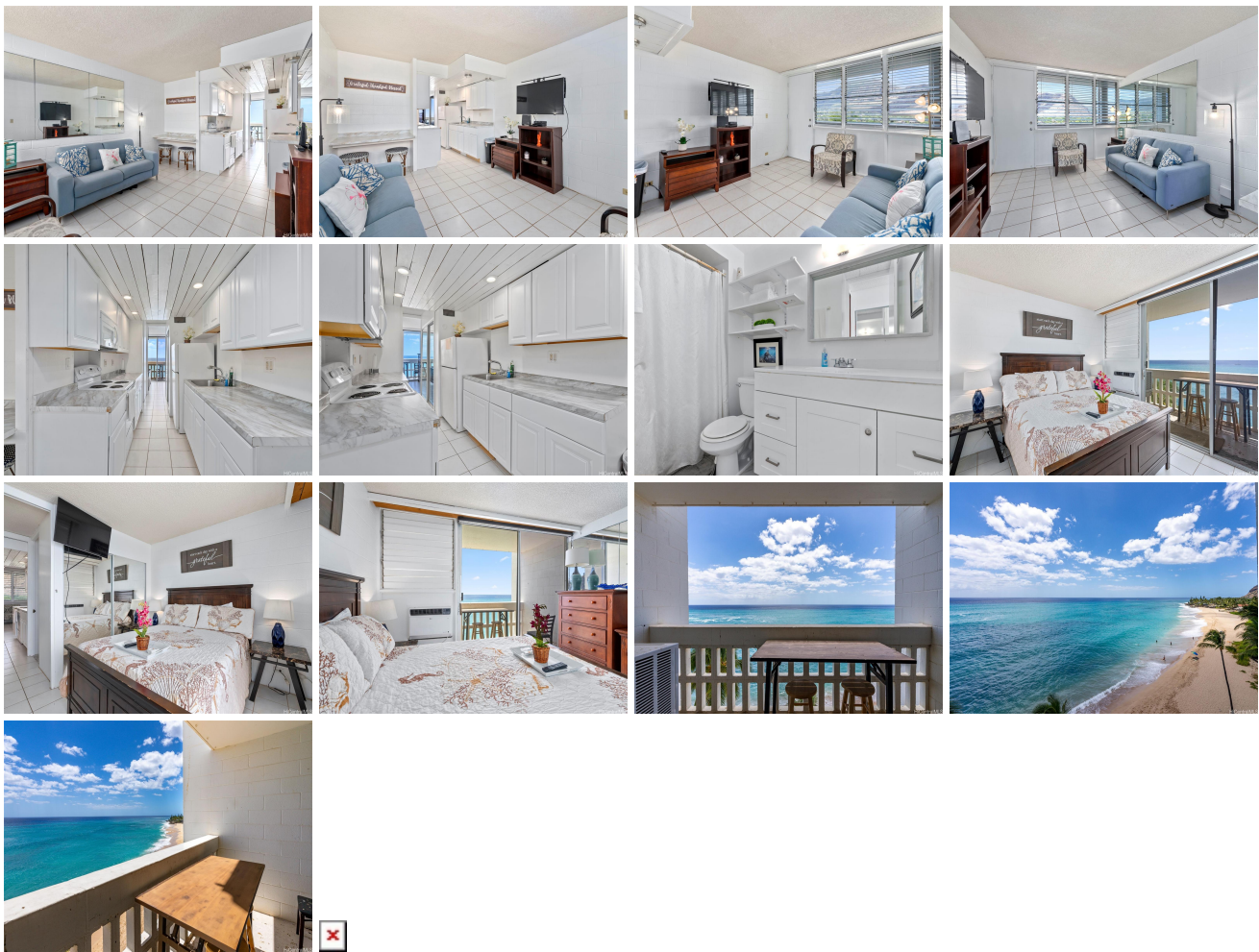


Makaha Beach Cabanas 84-965 Farrington Highway Unit A709, Waianae 96792 * \$379,000

Beds: 1	MLS#: 202319266, FS	Year Built: 1967
Bath: 1/0	Status: Active	Remodeled: 2020
Living Sq. Ft.: 456	List Date & DOM: 08-13-2023 & 339	Total Parking: 1
Land Sq. Ft.: 97,749	Condition: Excellent, Above Average	Assessed Value
Lanai Sq. Ft.: 64	Frontage: Ocean, Sandy Beach	Building: \$348,900
Sq. Ft. Other: 0	Tax/Year: \$94/2022	Land: \$7,700
Total Sq. Ft. 520	Neighborhood: Makaha	Total: \$356,600
Maint./Assoc. \$887 / \$0	Flood Zone : Zone VE - Tool	Stories / CPR: 8-14 / No
Parking: Guest, Open - 1	Frontage: Ocean, Sandy Beach	View: Coastline, Mountain, Ocean, Sunrise, Sunset
Zoning : 12 - A-2 Medium Density Apartme		

Public Remarks: Discover your peaceful oasis at Makaha Beach Cabanas, nestled on the pristine white sands of Makaha's premier beach. This 1-bedroom, 1-bathroom condo, located in a secure gated community, offers a serene respite away from city bustle. Experience the allure of tranquil beachside living in this truly unique setting. **Sale Conditions:** None **Schools:** , , * [Request Showing](#), [Photos](#), [History](#), [Maps](#), [Deed](#), [Watch List](#), [Tax Info](#)



Address	Price	Bd & Bth	Living / Avg.	Land Avg.	DOM
84-965 Farrington Highway A709	\$379,000	1 & 1/0	456 \$831	97,749 \$4	339

Address	Tax Maint. Ass.	Assessed Land	Assessed Building	Assessed Total	Ratio	Year & Remodeled
84-965 Farrington Highway A709	\$94 \$887 \$0	\$7,700	\$348,900	\$356,600	106%	1967 & 2020

[84-965 Farrington Highway A709](#) - MLS#: [202319266](#) - Discover your peaceful oasis at Makaha Beach Cabanas, nestled on the pristine white sands of Makaha's premier beach. This 1-bedroom, 1-bathroom condo, located in a secure gated community, offers a serene respite away from city bustle. Experience the allure of tranquil beachside living in this truly unique setting. **Region:** Leeward **Neighborhood:** Makaha **Condition:** Excellent, Above Average **Parking:** Guest, Open - 1 **Total Parking:** 1 **View:** Coastline, Mountain, Ocean, Sunrise, Sunset **Frontage:** Ocean, Sandy Beach **Pool:** **Zoning:** 12 - A-2 Medium Density Apartme **Sale Conditions:** None **Schools:** , , * [Request Showing](#), [Photos](#), [History](#), [Maps](#), [Deed](#), [Watch List](#), [Tax Info](#)

DOM = Days on Market