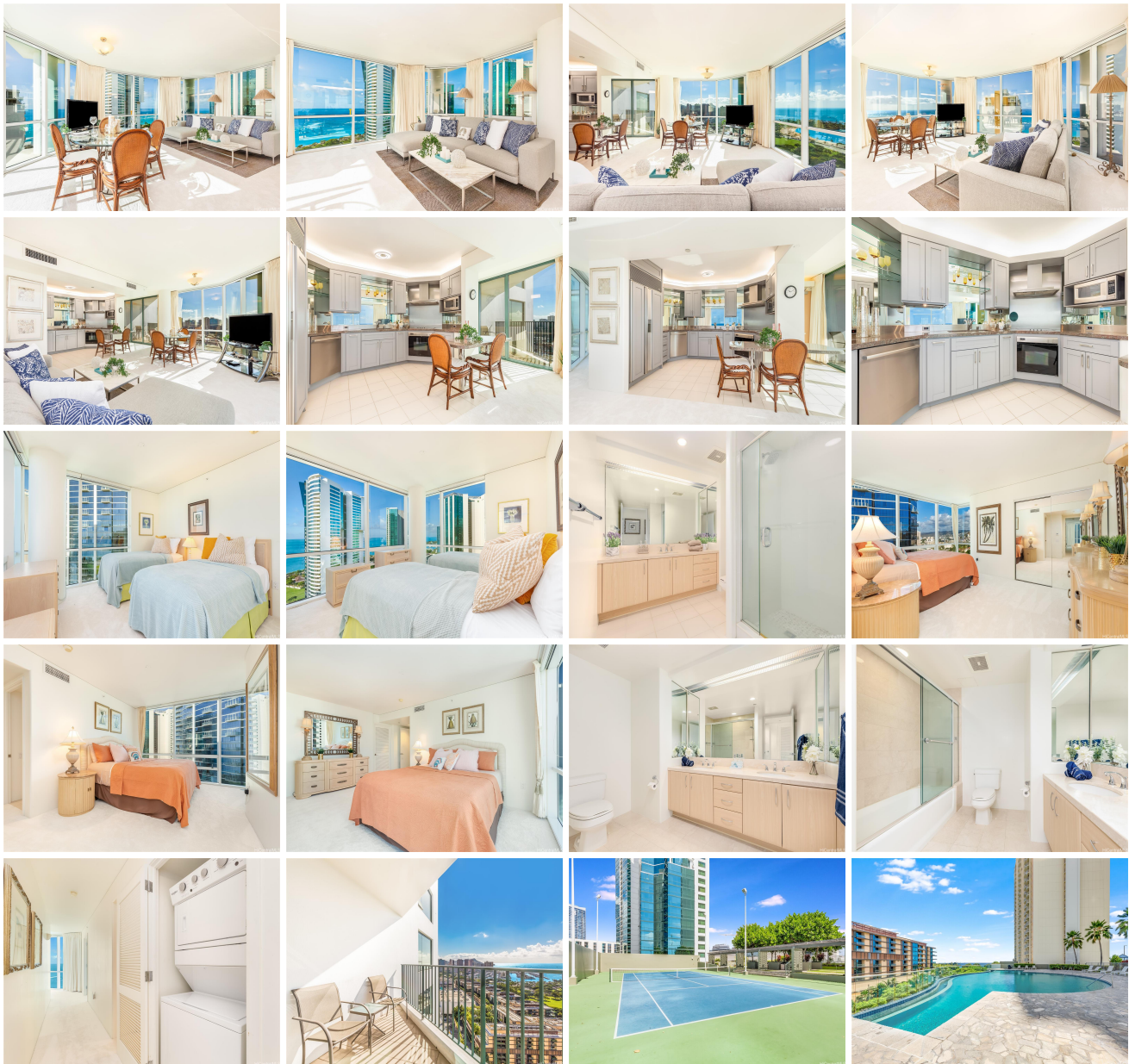


Hawaiki Tower 88 Piikoi Street Unit 3109, Honolulu 96814 * Hawaiki Tower * \$2,200,000 *

Originally \$2,300,000

Beds: 2	MLS#: 202319712, FS	Year Built: 1999
Bath: 2/0	Status: Active	Remodeled:
Living Sq. Ft.: 1,413	List Date & DOM: 08-21-2023 & 331	Total Parking: 2
Land Sq. Ft.: 267,981	Condition: Above Average	Assessed Value
Lanai Sq. Ft.: 55	Frontage:	Building: \$1,237,300
Sq. Ft. Other: 0	Tax/Year: \$635/2023	Land: \$79,400
Total Sq. Ft. 1,468	Neighborhood: Kakaako	Total: \$1,316,700
Maint./Assoc. \$1,247 / \$0	Flood Zone : Zone AE - Tool	Stories / CPR: 21+ / No
Parking: Assigned, Covered - 2	Frontage:	
Zoning : Kak - Kakaako Community Development Project	View: City, Coastline, Diamond Head, Ocean	

Public Remarks: Rare opportunity to own a high floor 09 stack in Hawaiki Tower. Expansive views of Diamond Head and Pacific Ocean will provide enjoyment while relaxing in the living room or lanai. Primary bedroom comes with two closets with one being a large walk-in closet. Unit comes with 2 parking stalls and located on the same level as the lobby for easy access. Hawaiki Tower is across the street from Ala Moana Shopping Center and walking distance to Ala Moana Beach Park. **Sale Conditions:** None **Schools:** , , * [Request Showing](#), [Photos](#), [History](#), [Maps](#), [Deed](#), [Watch List](#), [Tax Info](#)





Address	Price	Bd & Bth	Living / Avg.	Land Avg.	Lanai	Occ.	FL	DOM
88 Piikoi Street 3109	\$2,200,000	2 & 2/0	1,413 \$1,557	267,981 \$8	55	70%	31	331

Address	Tax Maint. Ass.	Assessed Land	Assessed Building	Assessed Total	Ratio	Year & Remodeled
88 Piikoi Street 3109	\$635 \$1,247 \$0	\$79,400	\$1,237,300	\$1,316,700	167%	1999 & NA

[88 Piikoi Street 3109](#) - MLS#: [202319712](#) - Original price was \$2,300,000 - Rare opportunity to own a high floor 09 stack in Hawaiki Tower. Expansive views of Diamond Head and Pacific Ocean will provide enjoyment while relaxing in the living room or lanai. Primary bedroom comes with two closets with one being a large walk-in closet. Unit comes with 2 parking stalls and located on the same level as the lobby for easy access. Hawaiki Tower is across the street from Ala Moana Shopping Center and walking distance to Ala Moana Beach Park. **Region:** Metro **Neighborhood:** Kakaako **Condition:** Above Average **Parking:** Assigned, Covered - 2 **Total Parking:** 2 **View:** City, Coastline, Diamond Head, Ocean **Frontage:** **Pool:** **Zoning:** Kak - Kakaako Community Development Project **Sale Conditions:** None **Schools:** , , * [Request Showing](#), [Photos](#), [History](#), [Maps](#), [Deed](#), [Watch List](#), [Tax Info](#)

DOM = Days on Market, Occ. = Occupancy, FL = Floor Number