

Trump Tower Waikiki 223 Saratoga Road Unit 3209, Honolulu 96815 * Trump Tower

Waikiki * \$5,390,000

Beds: **3**
 Bath: **2/1**
 Living Sq. Ft.: **1,972**
 Land Sq. Ft.: **0**
 Lanai Sq. Ft.: **64**
 Sq. Ft. Other: **0**
 Total Sq. Ft. **2,036**
 Maint./Assoc. **\$3,434 / \$0**
 Parking: **Other**

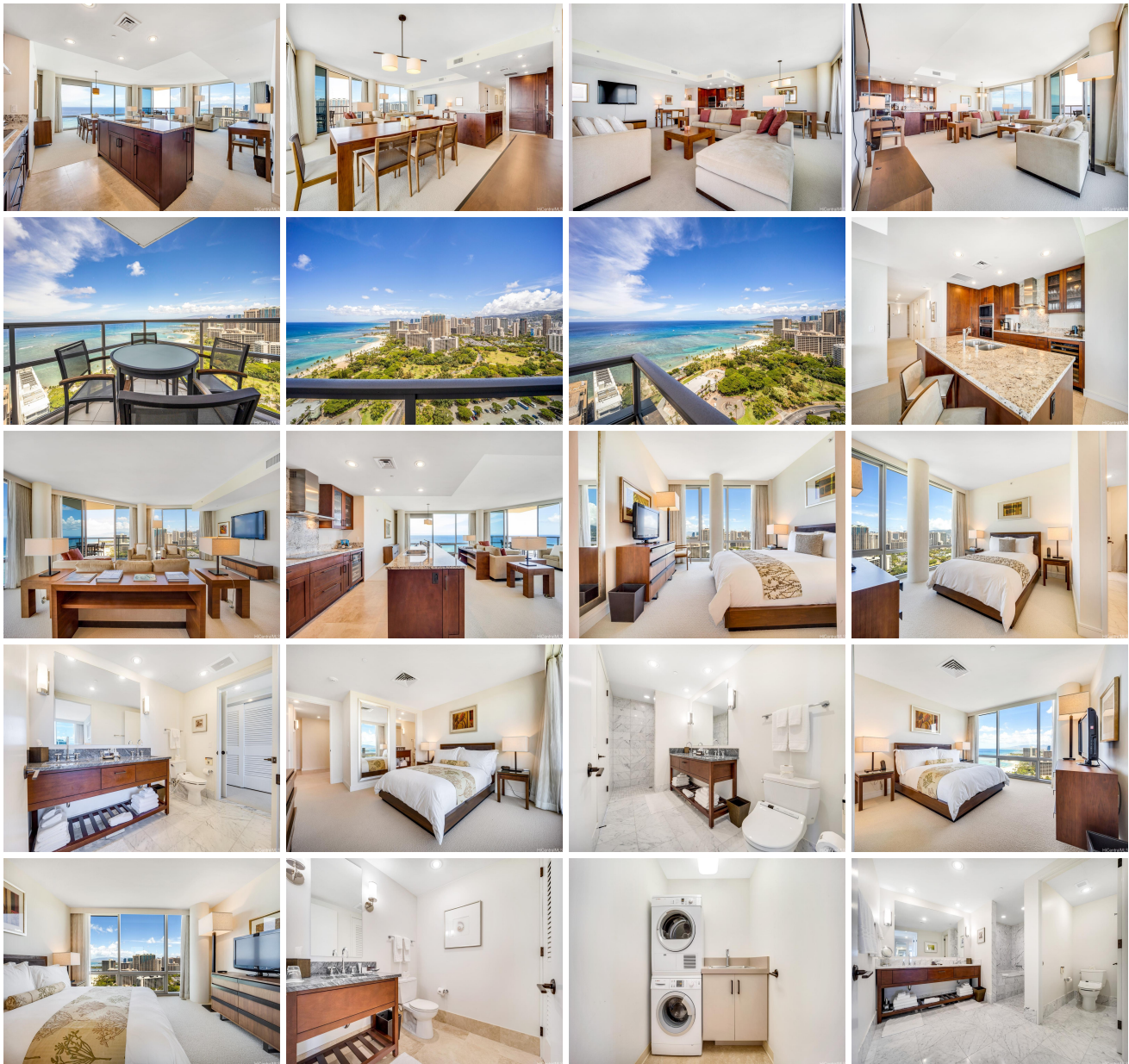
MLS#: **202320193, FS**
 Status: **Active**
 List Date & DOM: **08-29-2023 & 306**
 Condition: **Excellent**
 Frontage:
 Tax/Year: **\$2,234/2023**
 Neighborhood: **Waikiki**
Flood Zone: Zone AE - Tool

Year Built: **2009**
 Remodeled:
 Total Parking: **0**
[Assessed Value](#)
 Building: **\$1,995,600**
 Land: **\$1,095,600**
 Total: **\$3,091,200**
 Stories / CPR: **21+ / No**

Zoning: X6 - Resort Mixed Use Precinct

View: **City, Coastline, Mountain, Ocean, Sunset**

Public Remarks: Enjoy luxury living at Ka La'i Waikiki Beach, LXR Hotels & Resorts Hotel/Condo! (former Trump International Hotel Waikiki) RARE HIGH FLOOR Ocean Front 09 Suite! This 3 bedroom & 2.5 bath unit comes fully furnished with all linens and kitchenware. Hotel amenities including an infinity pool, spa, Gym, Restaurants, Concierge Service, Valet Parking, and more. 2 mins walk to the beach. **Sale Conditions:** None **Schools:** , , * [Request Showing](#), [Photos](#), [History](#), [Maps](#), [Deed](#), [Watch List](#), [Tax Info](#)





Address	Price	Bd & Bth	Living / Avg.	Land Avg.	Lanai	Occ.	FL	DOM
223 Saratoga Road 3209	\$5,390,000	3 & 2/1	1,972 \$2,733	0 \$inf	64	2%	32	306

Address	Tax Maint. Ass.	Assessed Land	Assessed Building	Assessed Total	Ratio	Year & Remodeled
223 Saratoga Road 3209	\$2,234 \$3,434 \$0	\$1,095,600	\$1,995,600	\$3,091,200	174%	2009 & NA

[223 Saratoga Road 3209](#) - MLS#: [202320193](#) - Enjoy luxury living at Ka La'i Waikiki Beach, LXR Hotels & Resorts Hotel/Condo! (former Trump International Hotel Waikiki) RARE HIGH FLOOR Ocean Front 09 Suite! This 3 bedroom & 2.5 bath unit comes fully furnished with all linens and kitchenware. Hotel amenities including an infinity pool, spa, Gym, Restaurants, Concierge Service, Valet Parking, and more. 2 mins walk to the beach. **Region:** Metro **Neighborhood:** Waikiki **Condition:** Excellent **Parking:** Other **Total Parking:** 0 **View:** City, Coastline, Mountain, Ocean, Sunset **Frontage:** **Pool:** **Zoning:** X6 - Resort Mixed Use Precinct **Sale Conditions:** None **Schools:** , , * [Request Showing](#), [Photos](#), [History](#), [Maps](#), [Deed](#), [Watch List](#), [Tax Info](#)

DOM = Days on Market, Occ. = Occupancy, FL = Floor Number