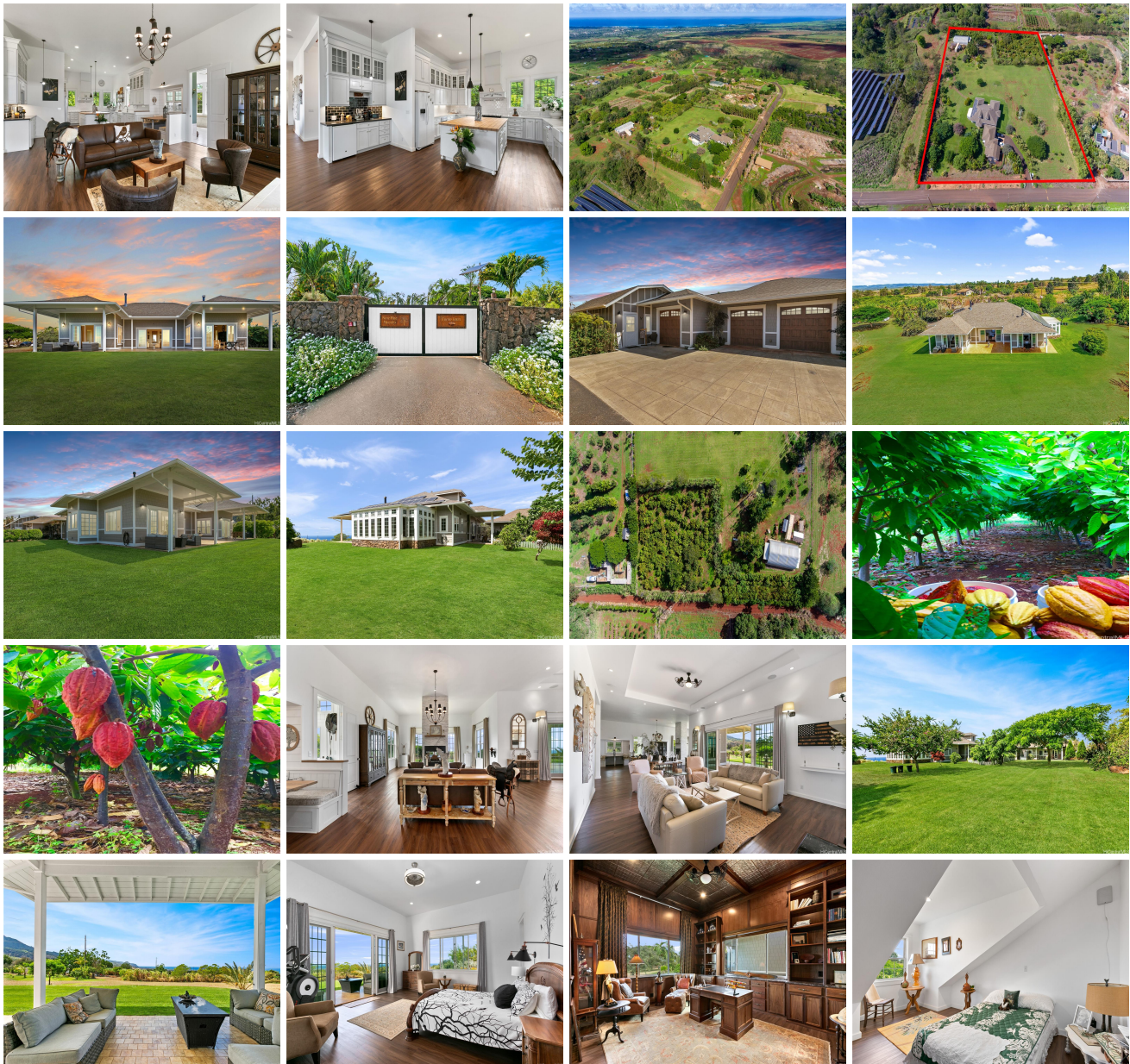


65-660 Kaukonahua Road Unit A, Waialua 96791 * \$4,977,000 * Originally \$5,995,000

Beds: 4	MLS#: 202320722, FS	Year Built: 2013
Bath: 3/0	Status: Active	Remodeled:
Living Sq. Ft.: 4,433	List Date & DOM: 10-01-2023 & 290	Total Parking: 20
Land Sq. Ft.: 221,633	Condition: Excellent	Assessed Value
Lanai Sq. Ft.: 0	Frontage: Other	Building: \$831,800
Sq. Ft. Other: 576	Tax/Year: \$227/2023	Land: \$251,800
Total Sq. Ft. 5,009	Neighborhood: Ag-preserve	Total: \$1,083,600
Maint./Assoc. \$0 / \$0	Flood Zone : Zone D - Tool	Stories / CPR: Basement, Two / Yes
Parking: 3 Car+, Boat, Driveway, Garage	Frontage: Other	
Zoning : 51 - AG-1 Restricted Agricultur	View: Coastline, Garden, Mountain, Ocean, Sunset	

Public Remarks: This stately farmhouse graces a 5-acre former chocolate farm of world award-winning Paris acclaim! Behind the 400-foot lava rock wall, landscaped mature gardens delight your senses. The elegant, classic home, built to last for generations, boasts magnificent sweeping views of the mountain and ocean vistas, 12-foot ceilings, a guest/caretaker house, custom walnut-paneled study, 2 fireplaces, 12-foot high kitchen with double-high cabinets, a massive 8-foot island, a 68-foot-long covered lanai facing vibrant sunsets, and overlooks the entire north shore countryside. Enjoy the best of both worlds with horses, as a gentleman farmer, or stroll the expansive green lawns and grounds. It is a net-zero energy home as well and opens fully to Hawaii's breezes. Located on the hillside five minutes from Haleiwa for shopping and fine dining and 45 minutes to Honolulu. **Sale Conditions:** None **Schools:** , , * [Request Showing](#), [Photos](#), [History](#), [Maps](#), [Deed](#), [Watch List](#), [Tax Info](#)





Address	Price	Bd & Bth	Living / Avg.	Land Avg.	DOM
65-660 Kaukonahua Road A	\$4,977,000	4 & 3/0	4,433 \$1,123	221,633 \$22	290

Address	Tax Maint. Ass.	Assessed Land	Assessed Building	Assessed Total	Ratio	Year & Remodeled
65-660 Kaukonahua Road A	\$227 \$0 \$0	\$251,800	\$831,800	\$1,083,600	459%	2013 & NA

[65-660 Kaukonahua Road A](#) - MLS#: [202320722](#) - Original price was \$5,995,000 - This stately farmhouse graces a 5-acre former chocolate farm of world award-winning Paris acclaim! Behind the 400-foot lava rock wall, landscaped mature gardens delight your senses. The elegant, classic home, built to last for generations, boasts magnificent sweeping views of the mountain and ocean vistas, 12-foot ceilings, a guest/caretaker house, custom walnut-paneled study, 2 fireplaces, 12-foot high kitchen with double-high cabinets, a massive 8-foot island, a 68-foot-long covered lanai facing vibrant sunsets, and overlooks the entire north shore countryside. Enjoy the best of both worlds with horses, as a gentleman farmer, or stroll the expansive green lawns and grounds. It is a net-zero energy home as well and opens fully to Hawaii's breezes. Located on the hillside five minutes from Haleiwa for shopping and fine dining and 45 minutes to Honolulu. **Region:** North Shore **Neighborhood:** Ag-preserve **Condition:** Excellent **Parking:** 3 Car+, Boat, Driveway, Garage **Total Parking:** 20 **View:** Coastline, Garden, Mountain, Ocean, Sunset **Frontage:** Other **Pool:** None **Zoning:** 51 - AG-1 Restricted Agriculture **Sale Conditions:** None **Schools:** , , * [Request Showing](#), [Photos](#), [History](#), [Maps](#), [Deed](#), [Watch List](#), [Tax Info](#)

DOM = Days on Market