

5231 Kuaiwi Place Unit A, Honolulu 96821 ** \$2,465,000 * Originally \$2,650,000

Beds: **3**
Bath: **2/1**
Living Sq. Ft.: **2,909**
Land Sq. Ft.: **8,922**

Lanai Sq. Ft.: **356**
Sq. Ft. Other: **0**
Total Sq. Ft. **3,265**
Maint./Assoc. **\$220 / \$0**

Parking: **2 Car, Driveway, Garage**

Zoning: 04 - R-7.5 Residential District

MLS#: **202320845, FS**
Status: **Active**
List Date & DOM: **09-19-2023 & 301**

Condition: **Excellent, Above Average**

Frontage:
Tax/Year: **\$505/2023**
Neighborhood: **Kahala Kua**

Flood Zone: Zone X - Tool

Frontage:

Year Built: **2002**
Remodeled:
Total Parking: **2**

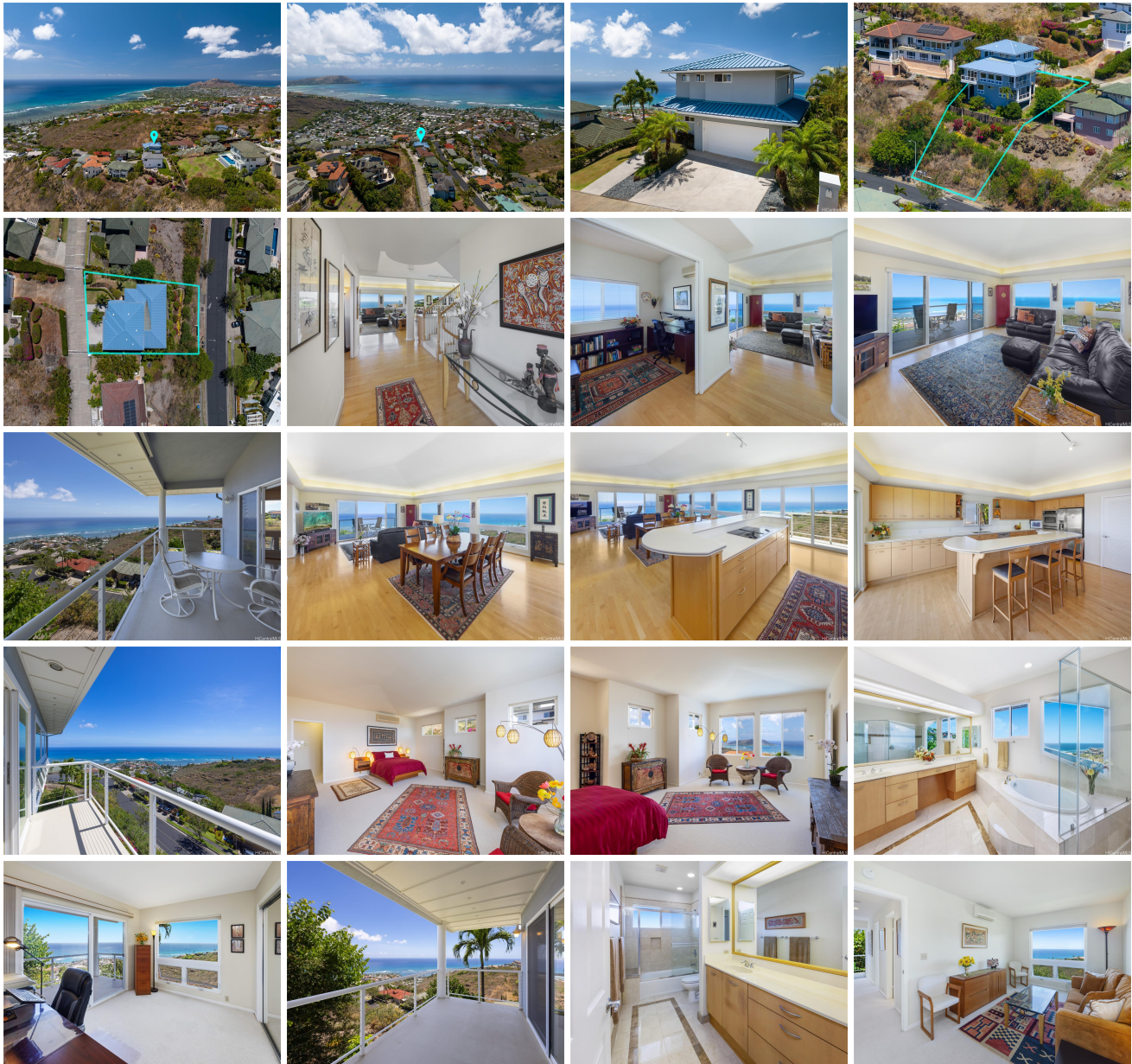
[Assessed Value](#)

Building: **\$772,300**
Land: **\$1,100,000**
Total: **\$1,872,300**

Stories / CPR: **Three+ / No**

View: **Coastline, Mountain, Ocean, Sunrise, Sunset**

Public Remarks: Welcome to KAHALA KUA, a rare gated premier community located between Kahala and Hawaii Kai with stunning unobstructed ocean views from every room. This architect designed 3 bedroom, 2.5 bath home is immaculately maintained and is located at the end of a dead-end street. The functional tri-level floor plan is an open concept with the primary bedroom/bath suite on the upper level, living/dining/kitchen/office/laundry/half bath/garage/workshop on the main level, and two bedrooms and one bath on the lower level. The primary bedroom/ensuite marble bath is spacious with an equally impressive walk-in closet. Other fine features of this home include split air systems, beautiful maple hardwood floors, custom kitchen with maple cabinets and walk-in pantry, lanais for relaxing and gazing at gorgeous ocean views. Delight in the numerous fruit trees including orange, mandarin, meyer lemon, dragon fruit and papaya. Enjoy hilltop private living yet close to beaches, shopping, and dining at nearby Kahala, Hawaii Kai, Honolulu, and Aina Haina. **Sale Conditions: None Schools: ,** * [Request Showing](#), [Photos](#), [History](#), [Maps](#), [Deed](#), [Watch List](#), [Tax Info](#)





| Address | Price | Bd & Bth | Living / Avg. | Land Avg. | Lanai | Occ. | FL | DOM |
|-------------------------------------|--------------------|----------|---------------|---------------|-------|------|----|-----|
| 5231 Kuaiwi Place A | \$2,465,000 | 3 & 2/1 | 2,909 \$847 | 8,922 \$276 | 356 | 0% | 0 | 301 |

| Address | Tax Maint. Ass. | Assessed Land | Assessed Building | Assessed Total | Ratio | Year & Remodeled |
|-------------------------------------|---------------------|---------------|-------------------|----------------|-------|------------------|
| 5231 Kuaiwi Place A | \$505 \$220 \$0 | \$1,100,000 | \$772,300 | \$1,872,300 | 132% | 2002 & NA |

[5231 Kuaiwi Place A](#) - MLS#: [202320845](#) - Original price was \$2,650,000 - Welcome to KAHALA KUA, a rare gated premier community located between Kahala and Hawaii Kai with stunning unobstructed ocean views from every room. This architect designed 3 bedroom, 2.5 bath home is immaculately maintained and is located at the end of a dead-end street. The functional tri-level floor plan is an open concept with the primary bedroom/bath suite on the upper level, living/dining/kitchen/office/laundry/half bath/garage/workshop on the main level, and two bedrooms and one bath on the lower level. The primary bedroom/ensuite marble bath is spacious with an equally impressive walk-in closet. Other fine features of this home include split air systems, beautiful maple hardwood floors, custom kitchen with maple cabinets and walk-in pantry, lanais for relaxing and gazing at gorgeous ocean views. Delight in the numerous fruit trees including orange, mandarin, meyer lemon, dragon fruit and papaya. Enjoy hilltop private living yet close to beaches, shopping, and dining at nearby Kahala, Hawaii Kai, Honolulu, and Aina Haina. **Region:** Diamond Head **Neighborhood:** Kahala Kua **Condition:** Excellent, Above Average **Parking:** 2 Car, Driveway, Garage **Total Parking:** 2 **View:** Coastline, Mountain, Ocean, Sunrise, Sunset **Frontage:** **Pool:** None **Zoning:** 04 - R-7.5 Residential District **Sale Conditions:** None **Schools:** , , * [Request Showing](#), [Photos](#), [History](#), [Maps](#), [Deed](#), [Watch List](#), [Tax Info](#)

DOM = Days on Market, Occ. = Occupancy, FL = Floor Number