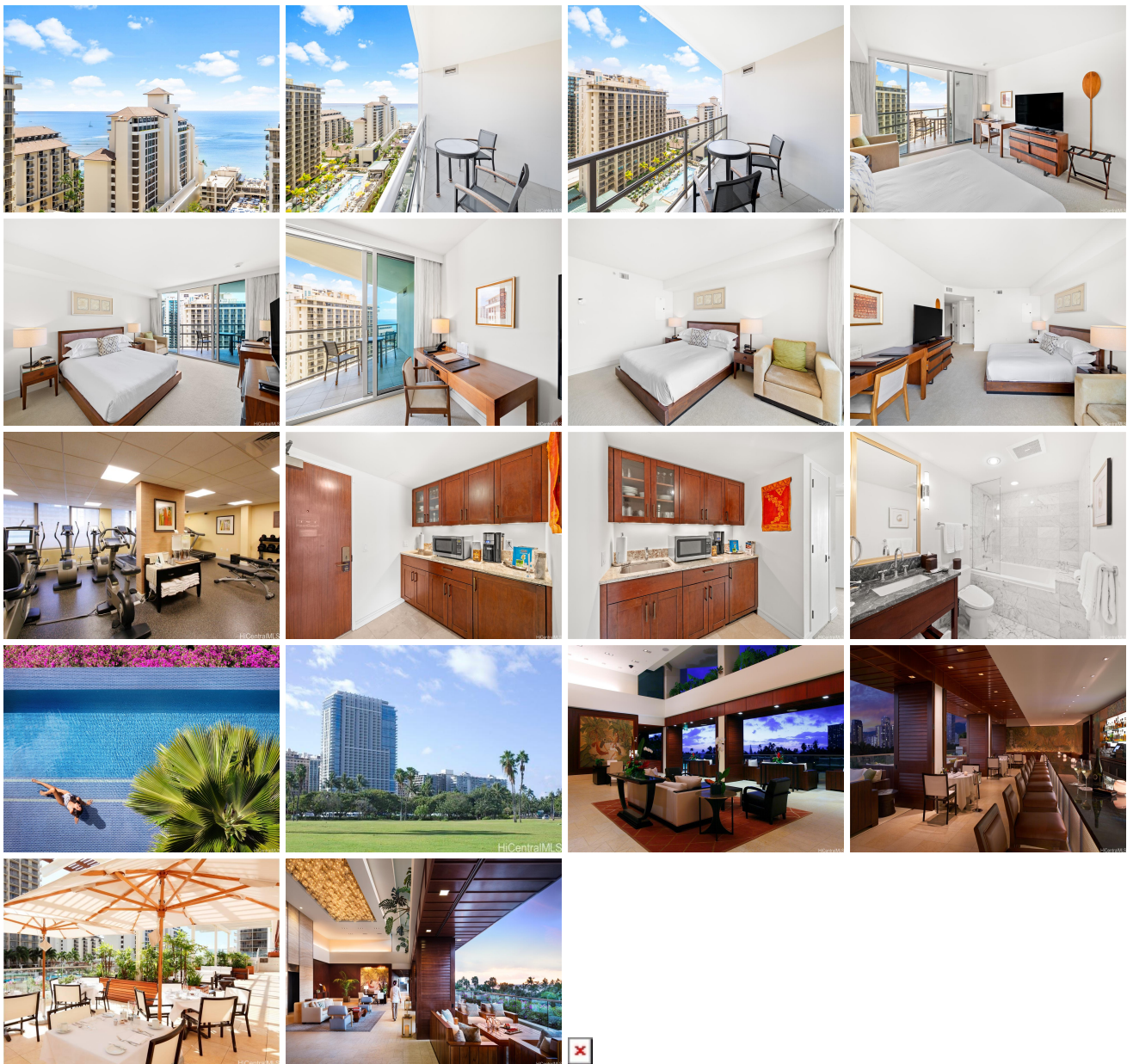


Trump Tower Waikiki 223 Saratoga Road Unit 1806, Honolulu 96815 * Trump Tower Waikiki * \$380,000 * Originally \$460,000

Beds: 0	MLS#: <u>202321352</u>, FS	Year Built: 2009
Bath: 1/0	Status: Active Under Contract	Remodeled:
Living Sq. Ft.: 355	List Date & DOM: 09-24-2023 & 249	Total Parking: 0
Land Sq. Ft.: 0	Condition: Excellent	Assessed Value
Lanai Sq. Ft.: 75	Frontage:	Building: \$119,000
Sq. Ft. Other: 0	Tax/Year: \$371/2023	Land: \$197,200
Total Sq. Ft. 430	Neighborhood: Waikiki	Total: \$316,200
Maint./Assoc. \$703 / \$0	Flood Zone : Zone AE - Tool	Stories / CPR: 21+ / No
Parking: Other	Frontage:	
Zoning : X6 - Resort Mixed Use Precinct	View: City, Mountain, Ocean	

Public Remarks: Enjoy luxury living at Ka La'i Waikiki Beach, LXR Hotels & Resorts Hotel/Condo! (former Trump International Hotel Waikiki) This Studio unit comes fully furnished with all linens & Kitchenware and Ocean and Mountain View! Top notch amenities include infinity pool, concierge, valet parking and a full service spa. Including in purchase are upscale appliances, granite counter tops and travertine tile flooring. Steps away from Waikiki's famous white sand beaches. **Sale Conditions:** None **Schools:** , , * [Request Showing](#), [Photos](#), [History](#), [Maps](#), [Deed](#), [Watch List](#), [Tax Info](#)



Address	Price	Bd & Bth	Living / Avg.	Land Avg.	Lanai	Occ.	FL	DOM
223 Saratoga Road 1806	\$380,000	0 & 1/0	355 \$1,070	0 \$inf	75	2%	18	249

Address	Tax Maint. Ass.	Assessed Land	Assessed Building	Assessed Total	Ratio	Year & Remodeled
223 Saratoga Road 1806	\$371 \$703 \$0	\$197,200	\$119,000	\$316,200	120%	2009 & NA

[223 Saratoga Road 1806](#) - MLS#: [202321352](#) - Original price was \$460,000 - Enjoy luxury living at Ka La'i Waikiki Beach, LXR Hotels & Resorts Hotel/Condo! (former Trump International Hotel Waikiki) This Studio unit comes fully furnished with all linens & Kitchenware and Ocean and Mountain View! Top notch amenities include infinity pool, concierge, valet parking and a full service spa. Including in purchase are upscale appliances, granite counter tops and travertine tile flooring. Steps away from Waikiki's famous white sand beaches. **Region:** Metro **Neighborhood:** Waikiki **Condition:** Excellent **Parking:** Other **Total Parking:** 0 **View:** City, Mountain, Ocean **Frontage:** **Pool:** **Zoning:** X6 - Resort Mixed Use Precinct **Sale Conditions:** None **Schools:** , , * [Request Showing](#), [Photos](#), [History](#), [Maps](#), [Deed](#), [Watch List](#), [Tax Info](#)

DOM = Days on Market, Occ. = Occupancy, FL = Floor Number