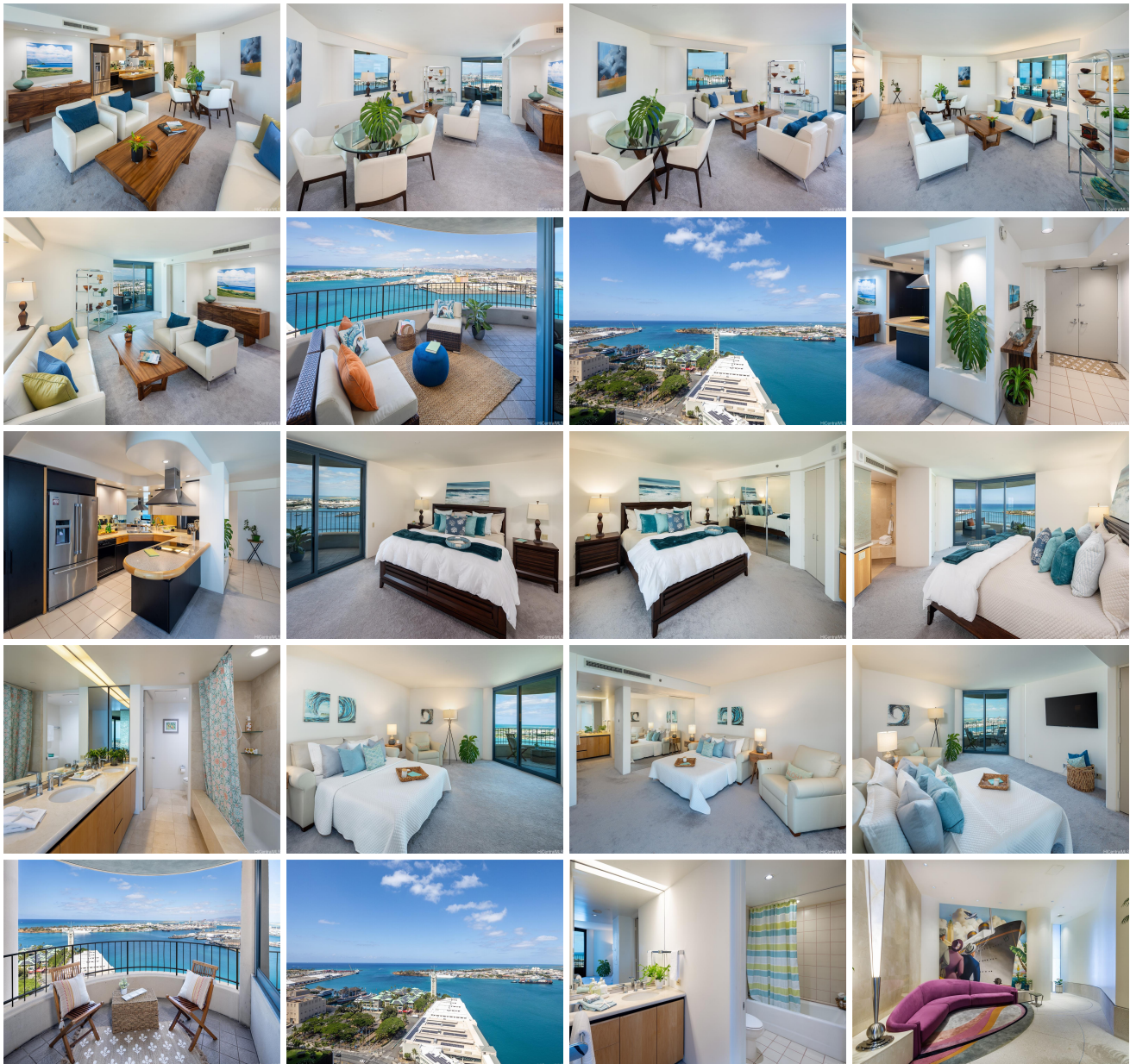


Harbor Court 66 Queen Street Unit 2901, Honolulu 96813 * Harbor Court * \$1,100,000

Beds: 2	MLS#: <u>202321831</u>, FS	Year Built: 1994
Bath: 2/0	Status: Active	Remodeled:
Living Sq. Ft.: 1,364	List Date & DOM: 09-27-2023 & 294	Total Parking: 2
Land Sq. Ft.: 57,673	Condition: Above Average	Assessed Value
Lanai Sq. Ft.: 210	Frontage:	Building: \$811,500
Sq. Ft. Other: 0	Tax/Year: \$265/2023	Land: \$97,600
Total Sq. Ft. 1,574	Neighborhood: Downtown	Total: \$909,100
Maint./Assoc. \$1,505 / \$0	Flood Zone : Zone X - Tool	Stories / CPR: 21+ / No
Parking: Covered - 2, Guest	Frontage:	
Zoning : 34 - BMX-4 Central Business Mix	View: Coastline, Ocean, Sunset	

Public Remarks: If you have been looking in Kakaako, stop now. You will be impressed with views, spacious living, and amenities that prestigious Harbor Court has to offer. Honolulu's best kept secret for luxury resort style living in the heart of downtown. The '01 corner units are the only units in HC with a full-sized second bedroom, two lanais, & large picture window with direct ocean & iconic Aloha Tower views. This beautiful unit boasts a fresh and clean contemporary design with 2 bedrooms, ensuite baths, and open living/dining area. Sparkling ocean views from the living area, both bedrooms, and both lanais. Sit back and soak in the changing vistas of Honolulu Harbor, the Reef Runway, and Aloha Tower and enjoy spectacular sunsets and nighttime city lights. Central A/C with two zones. New appliances including washer/dryer, dishwasher, cooktop, and oven. Amenities include heated infinity pool, gazebo, Jacuzzi, BBQ area, gym, conference room, library and more. 24-hour security & Residential Site Manager. Two tandem parking spots. Fall in love with downtown living at Harbor Court, Honolulu's landmark commercial/residential building, just 10 mins from Honolulu International Airport. **Sale Conditions: None Schools:** , , * [Request Showing](#), [Photos](#), [History](#), [Maps](#), [Deed](#), [Watch List](#), [Tax Info](#)





Address	Price	Bd & Bth	Living / Avg.	Land Avg.	Lanai	Occ.	FL	DOM
66 Queen Street 2901	\$1,100,000	2 & 2/0	1,364 \$806	57,673 \$19	210	84%	29	294

Address	Tax Maint. Ass.	Assessed Land	Assessed Building	Assessed Total	Ratio	Year & Remodeled
66 Queen Street 2901	\$265 \$1,505 \$0	\$97,600	\$811,500	\$909,100	121%	1994 & NA

[66 Queen Street 2901](#) - MLS#: [202321831](#) - If you have been looking in Kakaako, stop now. You will be impressed with views, spacious living, and amenities that prestigious Harbor Court has to offer. Honolulu's best kept secret for luxury resort style living in the heart of downtown. The '01 corner units are the only units in HC with a full-sized second bedroom, two lanais, & large picture window with direct ocean & iconic Aloha Tower views. This beautiful unit boasts a fresh and clean contemporary design with 2 bedrooms, ensuite baths, and open living/dining area. Sparkling ocean views from the living area, both bedrooms, and both lanais. Sit back and soak in the changing vistas of Honolulu Harbor, the Reef Runway, and Aloha Tower and enjoy spectacular sunsets and nighttime city lights. Central A/C with two zones. New appliances including washer/dryer, dishwasher, cooktop, and oven. Amenities include heated infinity pool, gazebo, Jacuzzi, BBQ area, gym, conference room, library and more. 24-hour security & Residential Site Manager. Two tandem parking spots. Fall in love with downtown living at Harbor Court, Honolulu's landmark commercial/residential building, just 10 mins from Honolulu International Airport. **Region:** Metro **Neighborhood:** Downtown **Condition:** Above Average **Parking:** Covered - 2, Guest **Total Parking:** 2 **View:** Coastline, Ocean, Sunset **Frontage:** **Pool:** **Zoning:** 34 - BMX-4 Central Business Mix **Sale Conditions:** None **Schools:** , , * [Request Showing](#), [Photos](#), [History](#), [Maps](#), [Deed](#), [Watch List](#), [Tax Info](#)

DOM = Days on Market, Occ. = Occupancy, FL = Floor Number