

**Kapiolani Towers 1610 Kanunu Street Unit 1207, Honolulu 96814 \* \$459,000 \* Originally**

**\$469,000**

Beds: **2**  
 Bath: **1/0**  
 Living Sq. Ft.: **795**  
 Land Sq. Ft.: **0**  
 Lanai Sq. Ft.: **192**  
 Sq. Ft. Other: **0**  
 Total Sq. Ft. **987**  
 Maint./Assoc. **\$1,041 / \$0**

MLS#: **202324000, FS**  
 Status: **Active**  
 List Date & DOM: **10-17-2023 & 270**  
 Condition: **Above Average**  
 Frontage: **Other**  
 Tax/Year: **\$46/2023**  
 Neighborhood: **Pawaa**  
 Flood Zone: **Zone X - Tool**

Year Built: **1966**  
 Remodeled: **2014**  
 Total Parking: **1**  
[Assessed Value](#)  
 Building: **\$341,900**  
 Land: **\$54,600**  
 Total: **\$396,500**  
 Stories / CPR: **One / No**

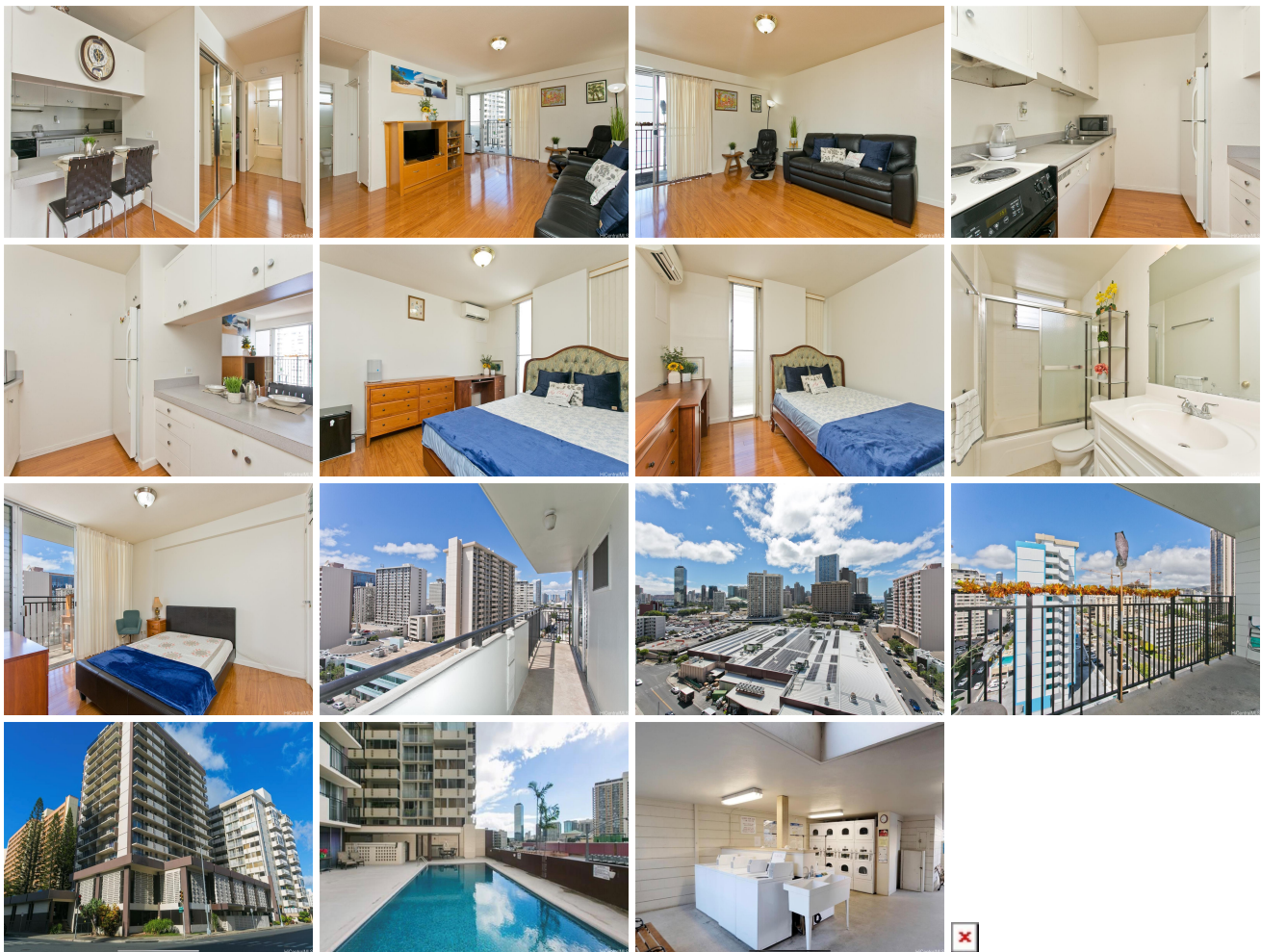
Parking: **Assigned**

Zoning: **13 - A-3 High Density Apartment**

Frontage: **Other**

View: **City**

**Public Remarks:** Well maintained 2 bedroom, 1 bathroom corner unit with two spacious lanais to relax on and take in the mountain breeze and partial ocean views. Excellent location across from Don Quijote, just a short walk from Ala Moana Shopping Center, Walmart, Target, and numerous restaurants. Convenient bus line access. Maintenance fee includes electricity, sewer, and hot water. Community amenities include a laundry facility with 8 washers and 8 dryers, as well as a pool. Full-time resident manager on site. Being sold in as-is condition. **Sale Conditions:** None **Schools:** [Kaahumanu](#), [Washington](#), [Mckinley](#) \* [Request Showing](#), [Photos](#), [History](#), [Maps](#), [Deed](#), [Watch List](#), [Tax Info](#)



Address	Price	Bd & Bth	Living / Avg.	Land   Avg.	DOM
<a href="#">1610 Kanunu Street 1207</a>	<b>\$459,000</b>	2 & 1/0	795   \$577	0   \$inf	270

Address	Tax   Maint.   Ass.	Assessed Land	Assessed Building	Assessed Total	Ratio	Year & Remodeled
<a href="#">1610 Kanunu Street 1207</a>	\$46   \$1,041   \$0	\$54,600	\$341,900	\$396,500	116%	1966 & 2014

[1610 Kanunu Street 1207](#) - MLS#: [202324000](#) - Original price was \$469,000 - Well maintained 2 bedroom, 1 bathroom corner unit with two spacious lanais to relax on and take in the mountain breeze and partial ocean views. Excellent location across from Don Quijote, just a short walk from Ala Moana Shopping Center, Walmart, Target, and numerous restaurants. Convenient bus line access. Maintenance fee includes electricity, sewer, and hot water. Community amenities include a laundry facility with 8 washers and 8 dryers, as well as a pool. Full-time resident manager on site. Being sold in as-is condition. **Region:** Metro **Neighborhood:** Pawaa **Condition:** Above Average **Parking:** Assigned **Total Parking:** 1 **View:** City **Frontage:** Other **Pool:** **Zoning:** 13 - A-3 High Density Apartment **Sale Conditions:** None **Schools:** [Kaahumanu](#), [Washington](#), [Mckinley](#) \* [Request Showing](#), [Photos](#), [History](#), [Maps](#), [Deed](#), [Watch List](#), [Tax Info](#)

DOM = Days on Market