

Kapiolani Towers 1610 Kanunu Street Unit 1108, Honolulu 96814 * Kapiolani Towers *

\$470,000

Beds: **2**
 Bath: **1/0**
 Living Sq. Ft.: **795**
 Land Sq. Ft.: **20,996**
 Lanai Sq. Ft.: **120**
 Sq. Ft. Other: **0**
 Total Sq. Ft. **915**
 Maint./Assoc. **\$983 / \$0**

MLS#: **202324310, FS**
 Status: **Active**
 List Date & DOM: **10-20-2023 & 271**
 Condition: **Fair**
 Frontage:
 Tax/Year: **\$125/2023**
 Neighborhood: **Pawaa**
Flood Zone: Zone X - Tool

Year Built: **1966**
 Remodeled:
 Total Parking: **1**
[Assessed Value](#)
 Building: **\$341,100**
 Land: **\$54,600**
 Total: **\$395,700**
 Stories / CPR: **15-20 / No**

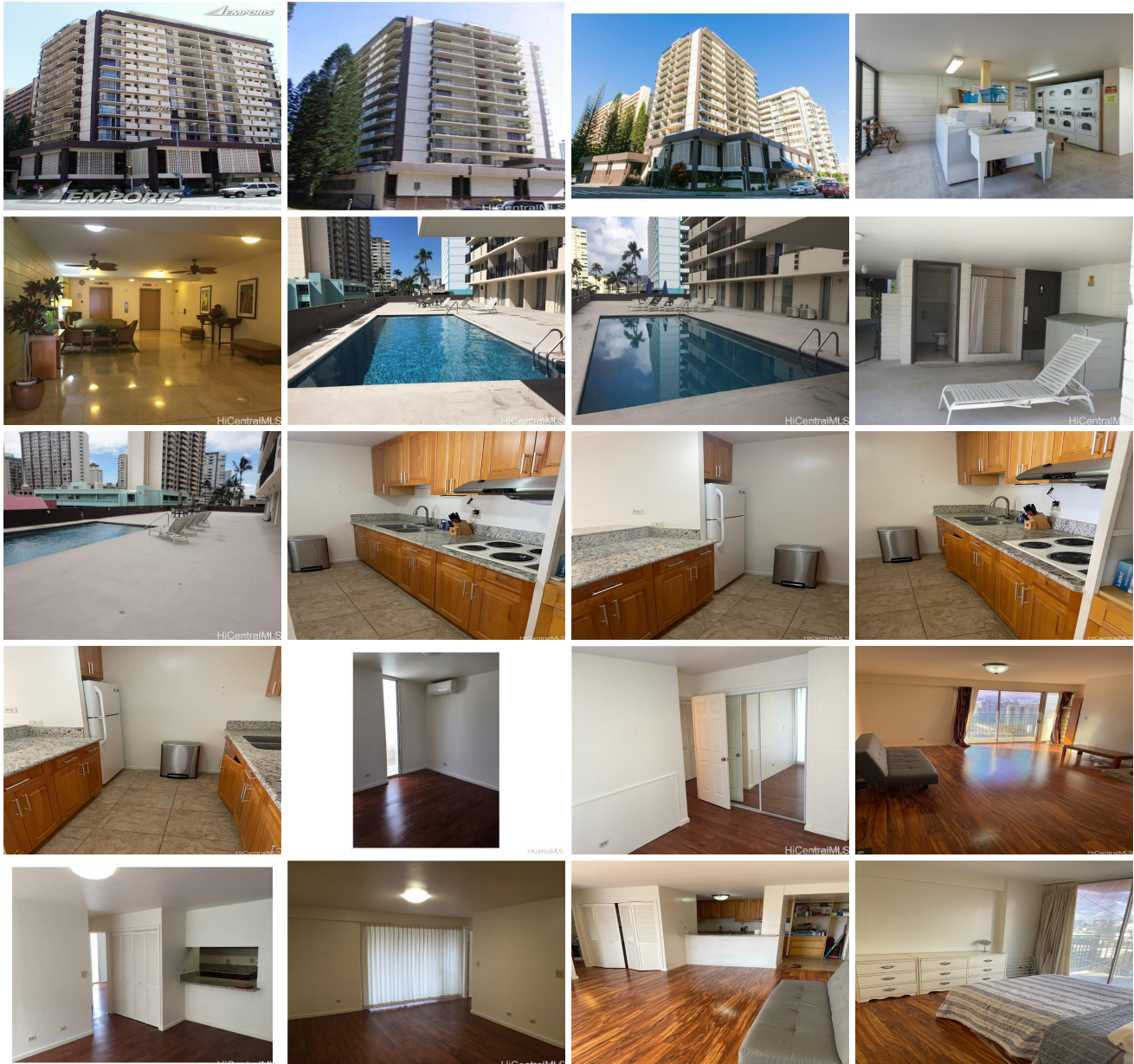
Parking: **Assigned, Covered - 1, Garage, Secured Entry, Street**

Frontage:

Zoning: 13 - A-3 High Density Apartment

View: **None**

Public Remarks: Conveniently located behind of Don Quixote and walking distance to Ala Moana Mall and various shopping and dining establishments. This is a corner unit. Updated kitchen with 4 burner range top. NO oven. No washer/dryer in the unit. Community laundry on the 3rd floor with the swimming pool. bathroom updated with step-over-threshold shower. Unit has 2 separate lanai. Assigned and covered parking. Parking entry for the unit is on Kanunu and is a mid-level stall, or need to either walk from street level up a flight of stairs to the mid-level parking or walk down a flight of stairs from the 2nd floor. Maintenance fee includes: water, hot water, sewer, electricity. AOA has a bulk package with Spectrum for basic cable and wifi. Sold in "as is" and "where is" condition. Unit is occupied and the lease expires on May 31, 2024. Tenant would like to remain and extend lease. **Sale Conditions:** None **Schools:** [Kaahumanu](#), [Washington](#), [Mckinley](#) * [Request Showing](#), [Photos](#), [History](#), [Maps](#), [Deed](#), [Watch List](#), [Tax Info](#)





Address	Price	Bd & Bth	Living / Avg.	Land Avg.	Lanai	Occ.	FL	DOM
1610 Kanunu Street 1108	\$470,000	2 & 1/0	795 \$591	20,996 \$22	120	65%	11	271

Address	Tax Maint. Ass.	Assessed Land	Assessed Building	Assessed Total	Ratio	Year & Remodeled
1610 Kanunu Street 1108	\$125 \$983 \$0	\$54,600	\$341,100	\$395,700	119%	1966 & NA

[1610 Kanunu Street 1108](#) - MLS#: [202324310](#) - Conveniently located behind of Don Quixote and walking distance to Ala Moana Mall and various shopping and dining establishments. This is a corner unit. Updated kitchen with 4 burner range top. NO oven. No washer/dryer in the unit. Community laundry on the 3rd floor with the swimming pool. bathroom updated with step-over-threshold shower. Unit has 2 separate lanai. Assigned and covered parking. Parking entry for the unit is on Kanunu and is a mid-level stall, or need to either walk from street level up a flight of stairs to the mid-level parking or walk down a flight of stairs from the 2nd floor. Maintenance fee includes: water, hot water, sewer, electricity. AOA has a bulk package with Spectrum for basic cable and wifi. Sold in "as is" and "where is" condition. Unit is occupied and the lease expires on May 31, 2024. Tenant would like to remain and extend lease. **Region:** Metro **Neighborhood:** Pawa **Condition:** Fair **Parking:** Assigned, Covered - 1, Garage, Secured Entry, Street **Total Parking:** 1 **View:** None **Frontage:** **Pool:** **Zoning:** 13 - A-3 High Density Apartment **Sale Conditions:** None **Schools:** [Kaahumanu](#), [Washington](#), [Mckinley](#) * [Request Showing](#), [Photos](#), [History](#), [Maps](#), [Deed](#), [Watch List](#), [Tax Info](#)

DOM = Days on Market, Occ. = Occupancy, FL = Floor Number