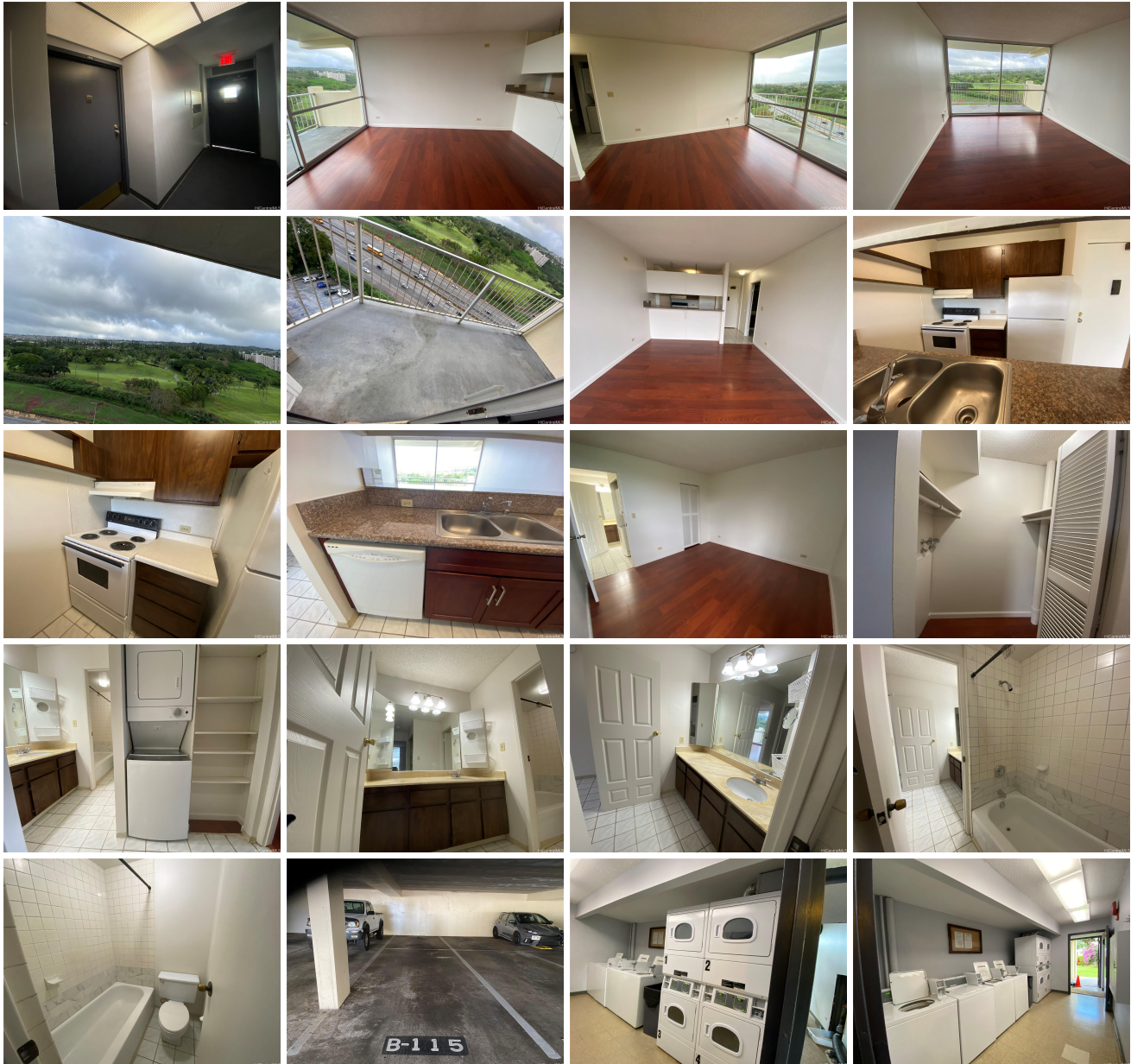


Highlander 98-450 Koauka Loop Unit 1606, Aiea 96701 * \$425,000

Beds: 1	MLS#: 202324452, FS	Year Built: 1975
Bath: 1/0	Status: Active	Remodeled:
Living Sq. Ft.: 514	List Date & DOM: 12-21-2023 & 209	Total Parking: 2
Land Sq. Ft.: 0	Condition: Above Average	Assessed Value
Lanai Sq. Ft.: 72	Frontage: Other	Building: \$314,900
Sq. Ft. Other: 0	Tax/Year: \$107/2023	Land: \$51,800
Total Sq. Ft. 586	Neighborhood: Pearlridge	Total: \$366,700
Maint./Assoc. \$747 / \$0	Flood Zone : Zone X - Tool	Stories / CPR: One / No
Parking: Assigned, Covered - 2, Guest, Street	Frontage: Other	
Zoning : 12 - A-2 Medium Density Apartme	View: Garden, Mountain, Other	

Public Remarks: Enjoy living at the HIGHLANDER in this partly furnished 1 bedroom, 1 bath home consisting of approximately 514 square feet of living space and a 72 square feet lanai. This unit includes 2 Tandem covered secured parking stalls. It's in a Great location very close to Pearlridge Shopping Center, Pali Momi Medical Center, Pearl Harbor/Hickam Air Force Base, Restaurants, Schools and Churches. This is an end unit, next to a fire exit door and trash chute. This property is being sold in "as is" condition. Appliances for this home includes a range/oven, refrigerator, dishwasher, disposal, range hood, washer/dryer and a window ac unit. Amenities for this unit include a BBQ area, Community Association Pool, Community Laundry area, Exercise Room, Meeting Room, Swimming pool, Sauna, Security Guards, Storage, Trash chute and Whirlpool. There's guest parking and street parking. The bus stop is in front of the building. **Sale Conditions: None Schools: Alvah Scott, Aiea, Aiea** * [Request Showing](#), [Photos](#), [History](#), [Maps](#), [Deed](#), [Watch List](#), [Tax Info](#)





Address	Price	Bd & Bth	Living / Avg.	Land Avg.	DOM
98-450 Koauka Loop 1606	\$425,000	1 & 1/0	514 \$827	0 \$inf	209

Address	Tax Maint. Ass.	Assessed Land	Assessed Building	Assessed Total	Ratio	Year & Remodeled
98-450 Koauka Loop 1606	\$107 \$747 \$0	\$51,800	\$314,900	\$366,700	116%	1975 & NA

[98-450 Koauka Loop 1606](#) - MLS#: [202324452](#) - Enjoy living at the HIGHLANDER in this partly furnished 1 bedroom, 1 bath home consisting of approximately 514 square feet of living space and a 72 square feet lanai. This unit includes 2 Tandem covered secured parking stalls. It's in a Great location very close to Pearlridge Shopping Center, Pali Momi Medical Center, Pearl Harbor/Hickam Air Force Base, Restaurants, Schools and Churches. This is an end unit, next to a fire exit door and trash chute. This property is being sold in "as is" condition. Appliances for this home includes a range/oven, refrigerator, dishwasher, disposal, range hood, washer/dryer and a window ac unit. Amenities for this unit include a BBQ area, Community Association Pool, Community Laundry area, Exercise Room, Meeting Room, Swimming pool, Sauna, Security Guards, Storage, Trash chute and Whirlpool. There's guest parking and street parking. The bus stop is in front of the building. **Region:** Pearl City **Neighborhood:** Pearlridge **Condition:** Above Average **Parking:** Assigned, Covered - 2, Guest, Street **Total Parking:** 2 **View:** Garden, Mountain, Other **Frontage:** Other **Pool:** **Zoning:** 12 - A-2 Medium Density Apartme **Sale Conditions:** None **Schools:** [Alvah Scott](#), [Aiea](#), [Aiea](#) * [Request Showing](#), [Photos](#), [History](#), [Maps](#), [Deed](#), [Watch List](#), [Tax Info](#)

DOM = Days on Market