

Sky Ala Moana West 1388 Kapiolani Boulevard Unit 1502, Honolulu 96814 * Sky Ala Moana

West * \$1,100,000 * Originally \$1,215,000

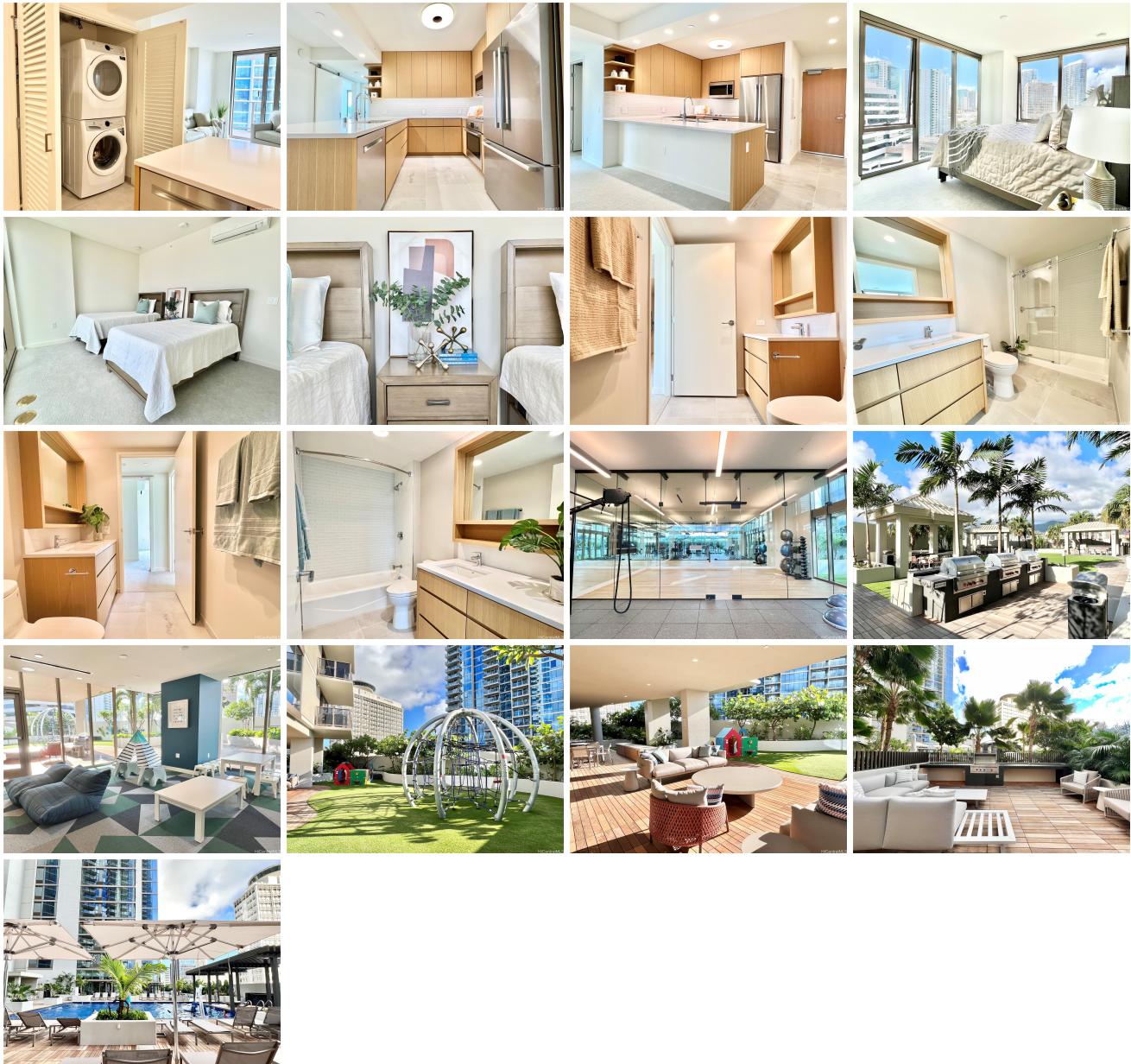
Beds: 2	MLS#: 202324557, FS	Year Built: 2023
Bath: 2/0	Status: Active	Remodeled:
Living Sq. Ft.: 822	List Date & DOM: 10-27-2023 & 264	Total Parking: 2
Land Sq. Ft.: 0	Condition: Excellent	Assessed Value
Lanai Sq. Ft.: 91	Frontage:	Building: \$282,400
Sq. Ft. Other: 0	Tax/Year: \$99/2023	Land: \$56,400
Total Sq. Ft. 913	Neighborhood: Holiday Mart	Total: \$338,800
Maint./Assoc. \$1,079 / \$0	Flood Zone : Zone X - Tool	Stories / CPR: 21+ / No
Parking: Assigned, Covered - 2, Garage, Guest, Secured Entry	Frontage:	

Zoning: 33 - BMX-3 Community Business M

View: City, Coastline, Mountain, Ocean

Public Remarks: Experience modern living at its finest! This brand-new condo boasts a prime location, just steps away from ALA MOANA Shopping Center and with Walmart/Sam's Club right in the vicinity. Enjoy breathtaking views through floor-to-ceiling windows and revel in the convenience of three split AC units. The interior is adorned with plush carpeting and features an open kitchen equipped with top-notch Bosch appliances. Your new home comes complete with two parking stalls and additional storage space. Indulge in a lifestyle of luxury with a range of amenities, including a BBQ area, Condo Association Pool, Dog Park, Exercise Room, Fire Sprinkler, Heated Pool, Meeting Room, Patio/Deck, Playground, Recreation Area, Recreation Room, Sauna, Trash Chute, and a Whirlpool. Plus, unwind at the poolside bar for the ultimate relaxation. Utilities are a breeze with included basic TV cable, basic internet/Wi-Fi, and water/sewer. Elevate your living experience - inquire now!

Sale Conditions: None **Schools:** [Kaahumanu](#), [Washington](#), [Mckinley](#) * [Request Showing](#), [Photos](#), [History](#), [Maps](#), [Deed](#), [Watch List](#), [Tax Info](#)



Address	Price	Bd & Bth	Living / Avg.	Land Avg.	Lanai	Occ.	FL	DOM
1388 Kapiolani Boulevard 1502	\$1,100,000	2 & 2/0	822 \$1,338	0 \$inf	91	35%	15	264

Address	Tax Maint. Ass.	Assessed Land	Assessed Building	Assessed Total	Ratio	Year & Remodeled
1388 Kapiolani Boulevard 1502	\$99 \$1,079 \$0	\$56,400	\$282,400	\$338,800	325%	2023 & NA

[1388 Kapiolani Boulevard 1502](#) - MLS#: [202324557](#) - Original price was \$1,215,000 - Experience modern living at its finest! This brand-new condo boasts a prime location, just steps away from ALA MOANA Shopping Center and with Walmart/Sam's Club right in the vicinity. Enjoy breathtaking views through floor-to-ceiling windows and revel in the convenience of three split AC units. The interior is adorned with plush carpeting and features an open kitchen equipped with top-notch Bosch appliances. Your new home comes complete with two parking stalls and additional storage space. Indulge in a lifestyle of luxury with a range of amenities, including a BBQ area, Condo Association Pool, Dog Park, Exercise Room, Fire Sprinkler, Heated Pool, Meeting Room, Patio/Deck, Playground, Recreation Area, Recreation Room, Sauna, Trash Chute, and a Whirlpool. Plus, unwind at the poolside bar for the ultimate relaxation. Utilities are a breeze with included basic TV cable, basic internet/Wi-Fi, and water/sewer. Elevate your living experience - inquire now! **Region:** Metro **Neighborhood:** Holiday Mart **Condition:** Excellent **Parking:** Assigned, Covered - 2, Garage, Guest, Secured Entry **Total Parking:** 2 **View:** City, Coastline, Mountain, Ocean **Frontage:** **Pool:** **Zoning:** 33 - BMX-3 Community Business M **Sale Conditions:** None **Schools:** [Kaahumanu](#), [Washington](#), [Mckinley](#) * [Request Showing](#), [Photos](#), [History](#), [Maps](#), [Deed](#), [Watch List](#), [Tax Info](#)

DOM = Days on Market, Occ. = Occupancy, FL = Floor Number