

# **One Waterfront Tower 415 South Street Unit PH4502, Honolulu 96813 \* \$3,449,000 \***

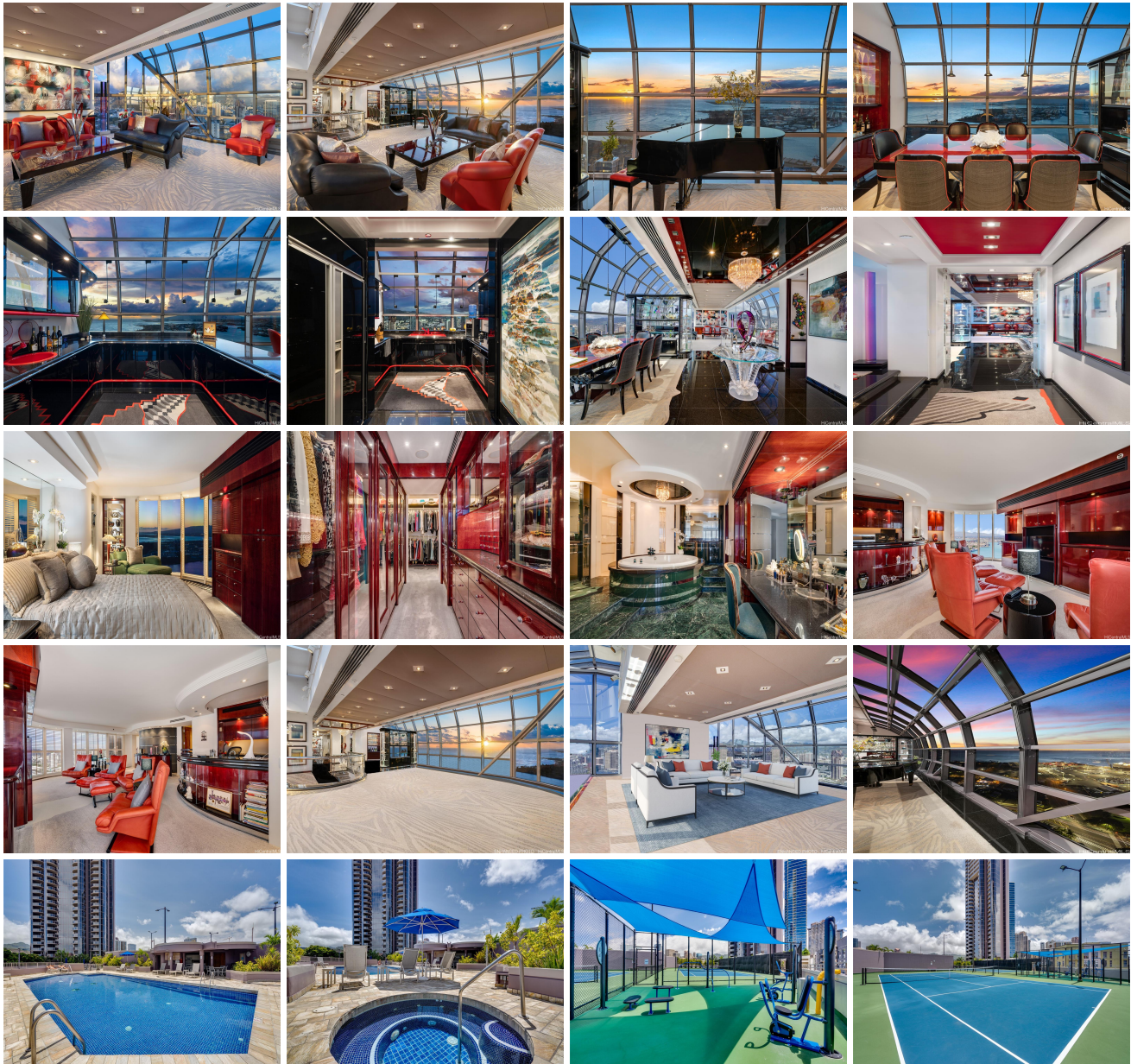
**Originally \$4,500,000**

Beds: <b>2</b>	MLS#: <b>202324583, FS</b>	Year Built: <b>1989</b>
Bath: <b>2/1</b>	Status: <b>Active</b>	Remodeled:
Living Sq. Ft.: <b>4,475</b>	List Date & DOM: <b>10-27-2023 &amp; 264</b>	Total Parking: <b>4</b>
Land Sq. Ft.: <b>0</b>	Condition: <b>Excellent</b>	<a href="#">Assessed Value</a>
Lanai Sq. Ft.: <b>0</b>	Frontage:	Building: <b>\$3,118,400</b>
Sq. Ft. Other: <b>0</b>	Tax/Year: <b>\$730/2024</b>	Land: <b>\$254,200</b>
Total Sq. Ft. <b>4,475</b>	Neighborhood: <b>Kakaako</b>	Total: <b>\$3,376,200</b>
Maint./Assoc. <b>\$2,725 / \$0</b>	<a href="#">Flood Zone</a> : <b>Zone X - Tool</b>	Stories / CPR: <b>21+ / No</b>
Parking: <b>Covered - 3+, Garage, Guest, Secured Entry</b>	Frontage:	

**Zoning:** KA - State jurisdiction, refer

**View:** City, Coastline, Diamond Head, Mountain, Ocean, Sunrise, Sunset

**Public Remarks:** 3 Floors of Wow, Windows, and Opulence! Incredibly well-designed Penthouse, developer's personal unit with Millions of dollars in upgrades, hand-selected materials, finishes, and decor. This private and secure skyline residence represents the pinnacle of Kakaako living - with walkability to choice restaurants, dog groomers, grocery, nightlife, beaches, and world-class shopping; this is Oahu's newest hot neighborhood. One Waterfront Tower is exceptionally well-built; the units are larger and feel more spacious than its recent competitors. The Recreation Deck has been fabulously refurbished - offering tennis courts, pickle ball, swimming pool, jacuzzi, and private cabanas. Immerse yourself in daily Sunsets and entertain by the Firepit at night with great neighbors and city lights. This building has 24-hour security, and our unit has 4 of the best-located, secure parking stalls in the building. Book your tour today:) **Sale Conditions:** None **Schools:** , , \* [Request Showing](#), [Photos](#), [History](#), [Maps](#), [Deed](#), [Watch List](#), [Tax Info](#)





Address	Price	Bd & Bth	Living / Avg.	Land   Avg.	DOM
<a href="#">415 South Street PH4502</a>	<b>\$3,449,000</b>	2 & 2/1	4,475   \$771	0   \$inf	264

Address	Tax   Maint.   Ass.	Assessed Land	Assessed Building	Assessed Total	Ratio	Year & Remodeled
<a href="#">415 South Street PH4502</a>	\$730   \$2,725   \$0	\$254,200	\$3,118,400	\$3,376,200	102%	1989 & NA

[415 South Street PH4502](#) - MLS#: [202324583](#) - Original price was \$4,500,000 - 3 Floors of Wow, Windows, and Opulence! Incredibly well-designed Penthouse, developer's personal unit with Millions of dollars in upgrades, hand-selected materials, finishes, and decor. This private and secure skyline residence represents the pinnacle of Kakaako living - with walkability to choice restaurants, dog groomers, grocery, nightlife, beaches, and world-class shopping; this is Oahu's newest hot neighborhood. One Waterfront Tower is exceptionally well-built; the units are larger and feel more spacious than its recent competitors. The Recreation Deck has been fabulously refurbished - offering tennis courts, pickle ball, swimming pool, jacuzzi, and private cabanas. Immerse yourself in daily Sunsets and entertain by the Firepit at night with great neighbors and city lights. This building has 24-hour security, and our unit has 4 of the best-located, secure parking stalls in the building. Book your tour today:) **Region:** Metro **Neighborhood:** Kakaako **Condition:** Excellent **Parking:** Covered - 3+, Garage, Guest, Secured Entry **Total Parking:** 4 **View:** City, Coastline, Diamond Head, Mountain, Ocean, Sunrise, Sunset **Frontage:** **Pool:** **Zoning:** KA - State jurisdiction, refer **Sale Conditions:** None **Schools:** , , \* [Request Showing](#), [Photos](#), [History](#), [Maps](#), [Deed](#), [Watch List](#), [Tax Info](#)

DOM = Days on Market