

**Pakalana 1571 Piikoi Street Unit 1506, Honolulu 96822 \* \$215,000**

Beds: **2**  
Bath: **1/1**  
Living Sq. Ft.: **753**  
Land Sq. Ft.: **0**  
Lanai Sq. Ft.: **59**  
Sq. Ft. Other: **0**  
Total Sq. Ft. **812**  
Maint./Assoc. **\$794 / \$0**

MLS#: **202325466, LH**  
Status: **Pending**  
List Date & DOM: **12-02-2023 & 5**  
Condition: **Average**  
Frontage:  
Tax/Year: **\$126/2023**  
Neighborhood: **Makiki Area**  
Flood Zone: **Zone X - Tool**

Year Built: **1976**  
Remodeled:  
Total Parking: **1**  
Assessed Value  
Building: **\$375,000**  
Land: **\$58,100**  
Total: **\$433,100**  
Stories / CPR: **15-20 / No**

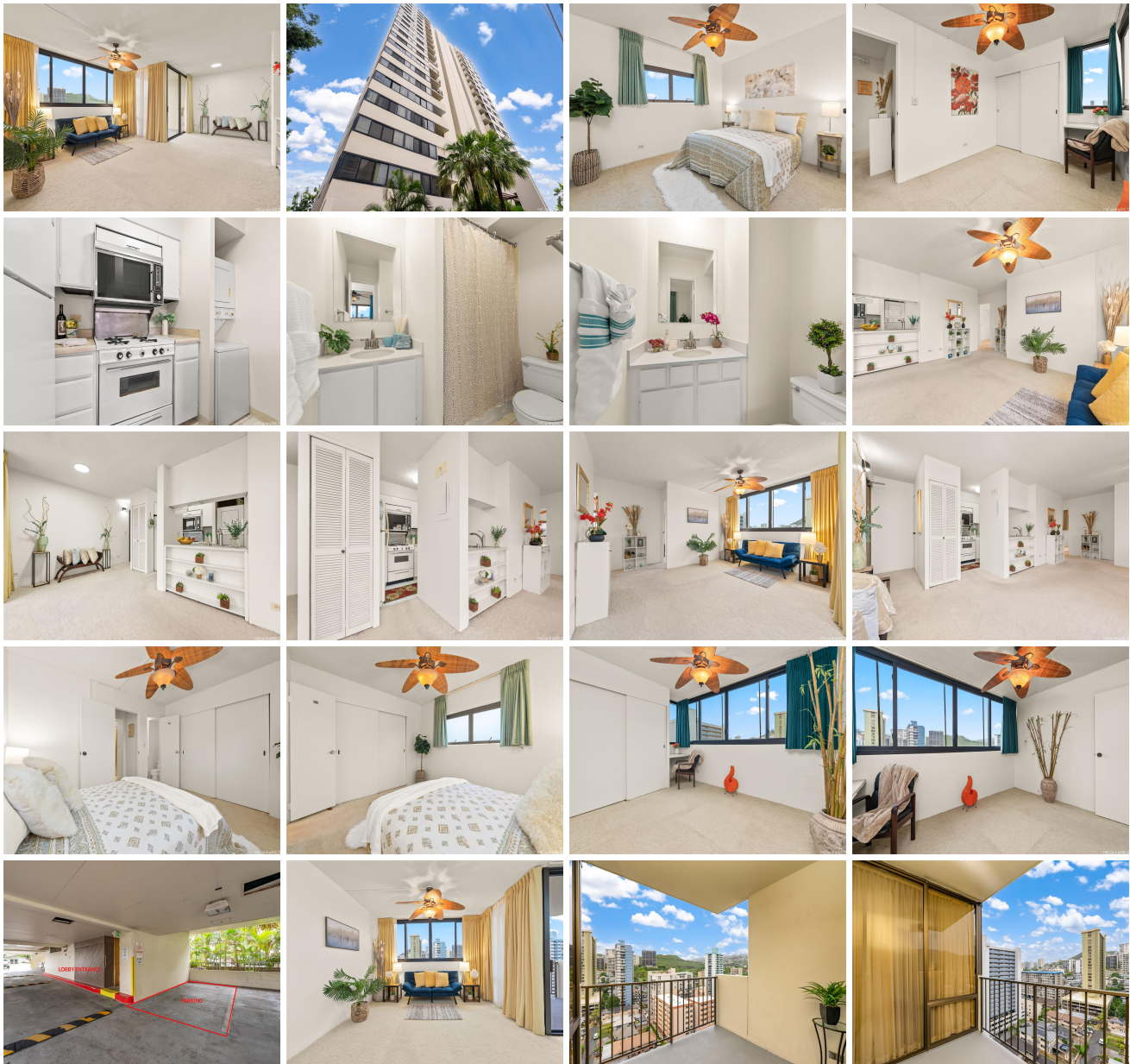
Parking: **Assigned, Covered - 1**

Frontage:

Zoning: **12 - A-2 Medium Density Apartme**

View: **City, Mountain, Ocean**

**Public Remarks:** Perfect condo opportunity! Welcome home to this move in ready (long 43 years, expires in 2066) breezy leasehold corner higher floor condo unit in the Pakalana condo that includes your own in-unit washer and dryer! Spacious 2-bedroom, 1.5 bath, 1 assigned covered parking stall plus a private lanai - the perfect spot to relax and unwind. Discover your opportunity to enjoy secure and convenient urban living right in town at a great price. Enjoy the views from this secure higher floor unit with an efficient floor plan and an on-site resident manager, guest parking and bbq area. Perfect location nearby the University of Hawaii, Ala Moana shopping center, Downtown Honolulu, restaurants and so much more. Upgraded unit with fresh paint, new lighting fixtures and this unit is priced under its 2023 tax assessed value! **Sale Conditions:** Probate  
**Schools:** , , \* [Request Showing](#), [Photos](#), [History](#), [Maps](#), [Deed](#), [Watch List](#), [Tax Info](#)





| Address                                 | Price               | Bd & Bth | Living / Avg. | Land   Avg. | DOM |
|---|---------------------|----------|---------------|-------------|-----|
| <a href="#">1571 Piikoi Street 1506</a> | <b>\$215,000 LH</b> | 2 & 1/1  | 753   \$286   | 0   \$inf   | 5   |

| Address                                 | Tax   Maint.   Ass. | Assessed Land | Assessed Building | Assessed Total | Ratio | Year & Remodeled |
|---|---------------------|---------------|-------------------|----------------|-------|------------------|
| <a href="#">1571 Piikoi Street 1506</a> | \$126   \$794   \$0 | \$58,100      | \$375,000         | \$433,100      | 50%   | 1976 & NA        |

[1571 Piikoi Street 1506](#) - MLS#: [202325466](#) - Perfect condo opportunity! Welcome home to this move in ready (long 43 years, expires in 2066) breezy leasehold corner higher floor condo unit in the Pakalana condo that includes your own in-unit washer and dryer! Spacious 2-bedroom, 1.5 bath, 1 assigned covered parking stall plus a private lanai - the perfect spot to relax and unwind. Discover your opportunity to enjoy secure and convenient urban living right in town at a great price. Enjoy the views from this secure higher floor unit with an efficient floor plan and an on-site resident manager, guest parking and bbq area. Perfect location nearby the University of Hawaii, Ala Moana shopping center, Downtown Honolulu, restaurants and so much more. Upgraded unit with fresh paint, new lighting fixtures and this unit is priced under its 2023 tax assessed value!

**Region:** Metro **Neighborhood:** Makiki Area **Condition:** Average **Parking:** Assigned, Covered - 1 **Total Parking:** 1 **View:** City, Mountain, Ocean **Frontage:** **Pool:** **Zoning:** 12 - A-2 Medium Density Apartme **Sale Conditions:** Probate **Schools:** , , \*

[Request Showing](#), [Photos](#), [History](#), [Maps](#), [Deed](#), [Watch List](#), [Tax Info](#)

DOM = Days on Market