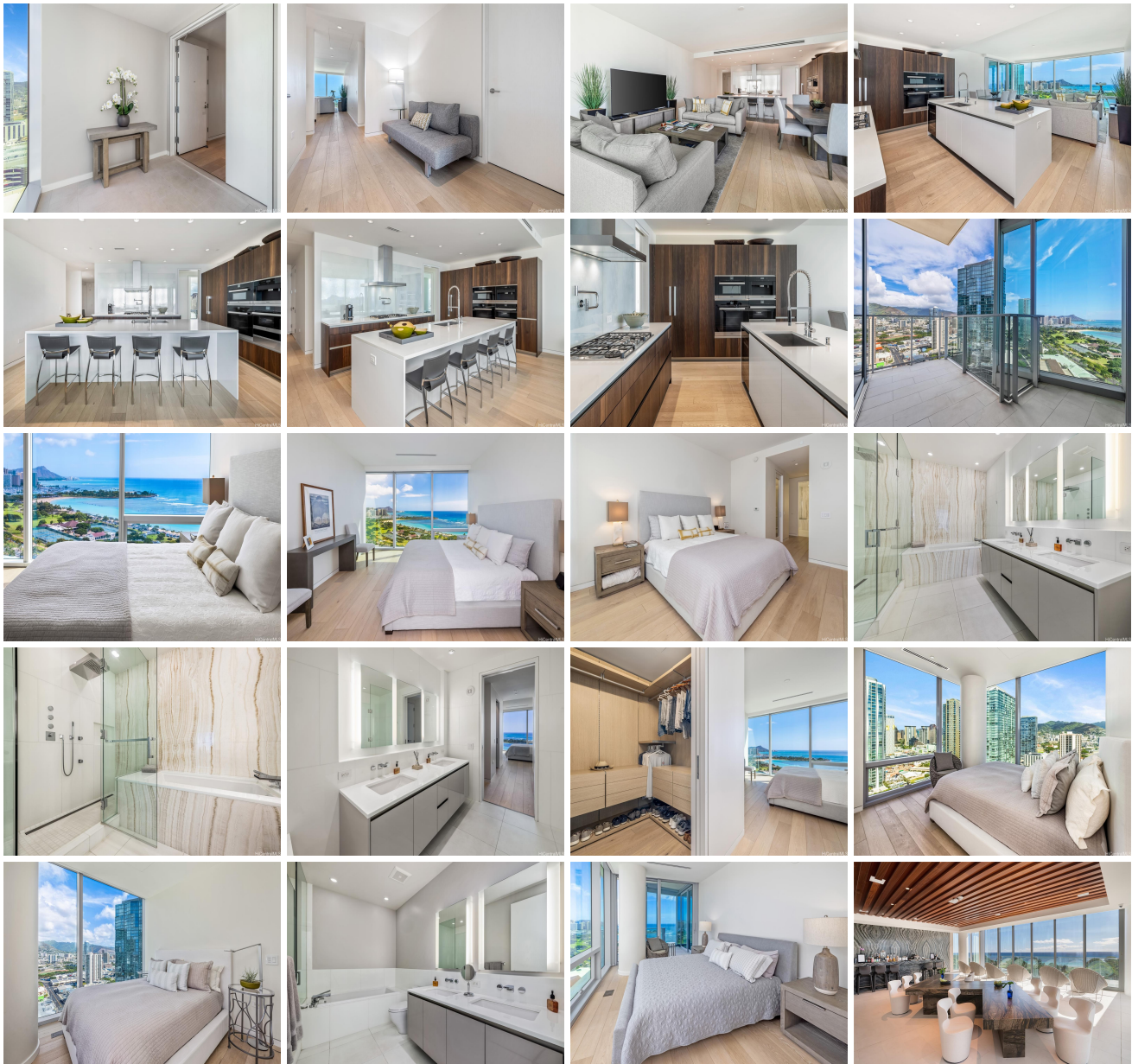


Waiea - 1118 Ala Moana 1118 Ala Moana Boulevard Unit 2306, Honolulu 96814 * Waiea -

1118 Ala Moana * \$4,695,000

Beds: 3	MLS#: 202325604, FS	Year Built: 2016
Bath: 2/1	Status: Active	Remodeled:
Living Sq. Ft.: 2,153	List Date & DOM: 11-16-2023 & 244	Total Parking: 2
Land Sq. Ft.: 0	Condition: Excellent	Assessed Value
Lanai Sq. Ft.: 76	Frontage:	Building: \$3,480,100
Sq. Ft. Other: 0	Tax/Year: \$2,795/2023	Land: \$111,000
Total Sq. Ft. 2,229	Neighborhood: Kakaako	Total: \$3,591,100
Maint./Assoc. \$2,485 / \$0	Flood Zone : Zone AE - Tool	Stories / CPR: 21+ / No
Parking: Covered - 2, Guest, Secured Entry	Frontage:	
Zoning : Kak - Kakaako Community Development Project	View: City, Coastline, Diamond Head, Marina/Canal, Mountain, Ocean, Sunset	

Public Remarks: Embrace the luxury of urban island living that is Ward Village in Kakaako. This preferred 06 home in the sky faces the ocean, Diamond Head and the Waikiki Coastline. Private foyer entry, soaring 9'6" ceilings, custom European cabinetry, Miele appliances, beautifully appointed bathrooms feature a dramatic Onyx wall, hardwood and stone flooring throughout, motorized shades at every window - the luxury just never ends. Unparalleled amenities for discerning residents include guest suites for overnight friends, quiet lounges, and the Howard Hughes poolside bar. Separate storage room, 2 parking spaces in garage. Pets are welcome too. **Sale Conditions:** None **Schools:** [Kaahumanu](#), [Stevenson](#), [Mckinley](#) * [Request Showing](#), [Photos](#), [History](#), [Maps](#), [Deed](#), [Watch List](#), [Tax Info](#)





Address	Price	Bd & Bth	Living / Avg.	Land Avg.	Lanai	Occ.	FL	DOM
1118 Ala Moana Boulevard 2306	\$4,695,000	3 & 2/1	2,153 \$2,181	0 \$inf	76	34%	23	244

Address	Tax Maint. Ass.	Assessed Land	Assessed Building	Assessed Total	Ratio	Year & Remodeled
1118 Ala Moana Boulevard 2306	\$2,795 \$2,485 \$0	\$111,000	\$3,480,100	\$3,591,100	131%	2016 & NA

[1118 Ala Moana Boulevard 2306](#) - MLS#: [202325604](#) - Embrace the luxury of urban island living that is Ward Village in Kakaako. This preferred 06 home in the sky faces the ocean, Diamond Head and the Waikiki Coastline. Private foyer entry, soaring 9'6" ceilings, custom European cabinetry, Miele appliances, beautifully appointed bathrooms feature a dramatic Onyx wall, hardwood and stone flooring throughout, motorized shades at every window - the luxury just never ends. Unparalleled amenities for discerning residents include guest suites for overnight friends, quiet lounges, and the Howard Hughes poolside bar. Separate storage room, 2 parking spaces in garage. Pets are welcome too. **Region:** Metro **Neighborhood:** Kakaako **Condition:** Excellent **Parking:** Covered - 2, Guest, Secured Entry **Total Parking:** 2 **View:** City, Coastline, Diamond Head, Marina/Canal, Mountain, Ocean, Sunset **Frontage:** **Pool:** **Zoning:** Kak - Kakaako Community Development Project **Sale Conditions:** None **Schools:** [Kaahumanu](#), [Stevenson](#), [Mckinley](#) * [Request Showing](#), [Photos](#), [History](#), [Maps](#), [Deed](#), [Watch List](#), [Tax Info](#)

DOM = Days on Market, Occ. = Occupancy, FL = Floor Number