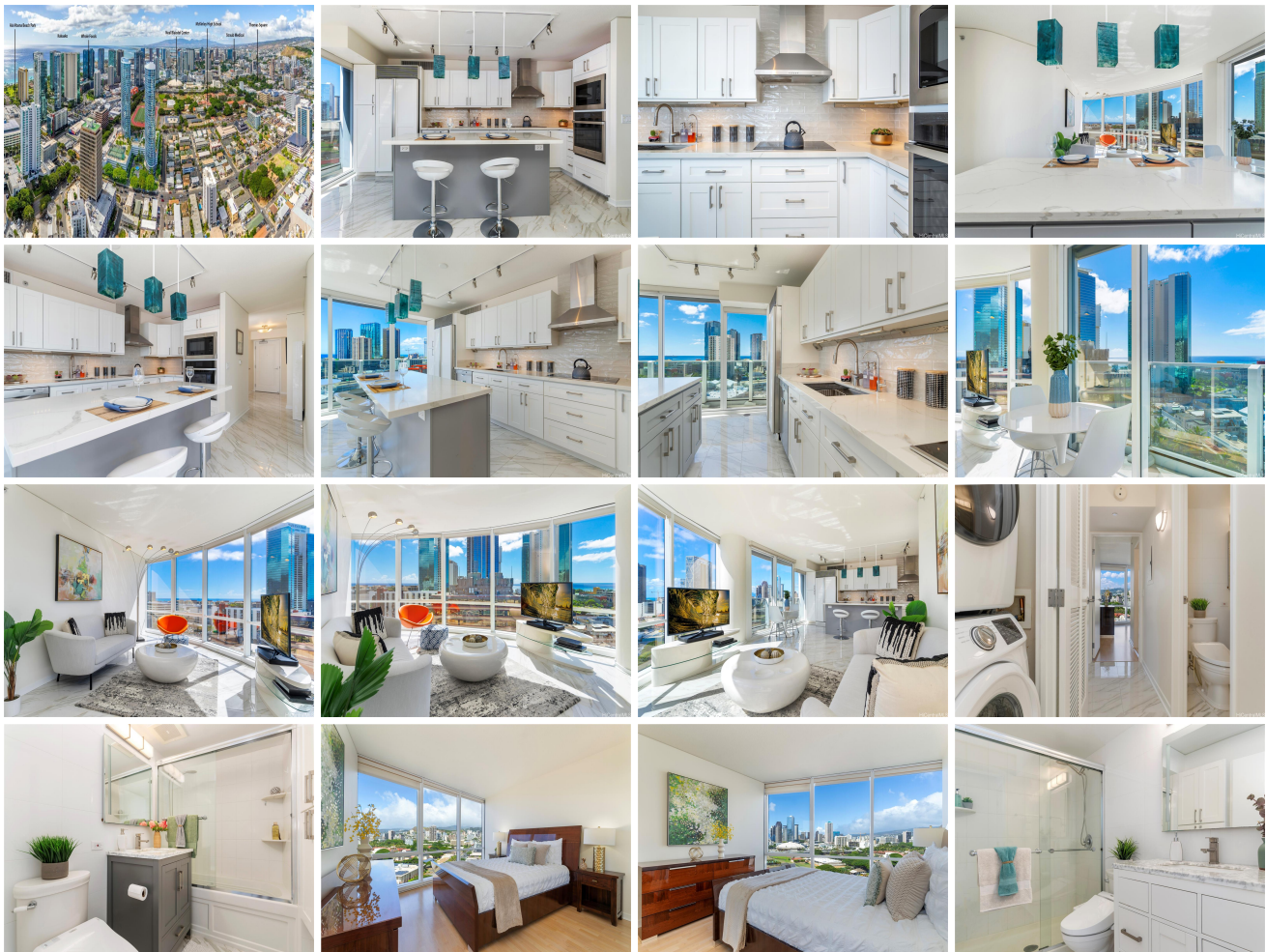


Moana Pacific 1288 Kapiolani Boulevard Unit I-1808 (West Tower), Honolulu 96814 *

Moana Pacific * \$1,098,000 * Originally \$1,128,000

Beds: 3	MLS#: 202325814, FS	Year Built: 2007
Bath: 2/0	Status: Active	Remodeled: 2020
Living Sq. Ft.: 1,206	List Date & DOM: 11-20-2023 & 240	Total Parking: 2
Land Sq. Ft.: 0	Condition: Excellent	Assessed Value
Lanai Sq. Ft.: 42	Frontage:	Building: \$975,900
Sq. Ft. Other: 0	Tax/Year: \$381/2023	Land: \$74,500
Total Sq. Ft. 1,248	Neighborhood: Kakaako	Total: \$1,050,400
Maint./Assoc. \$1,262 / \$0	Flood Zone : Zone X - Tool	Stories / CPR: 21+ / No
Parking: Assigned, Covered - 1, Garage, Guest	Frontage:	
Zoning : Kak - Kakaako Community Development Project	View: City, Mountain, Ocean, Sunset	

Public Remarks: Welcome to Moana Pacific. One of the better values in the Metro town location for a luxury/modern 3 bedroom 2 Bath, 2 Parking (side-by-side) with less than \$950.00 price per square foot (Great Value). Built in 2007, where there is good living square footage, sprinklers, and a superb location in the heart of Honolulu. Quality features include a fully remodeled kitchen in 2020 (\$72,000 in cost), countertops, cabinetry, newer tile flooring, and replacement of AC components (\$7,900), and many others to appreciate. Moana Pacific is a secured high-rise condo with short distances to Ala Moana Shopping Center, restaurants, beaches, shops, surf spots, medical facilities, UH Manoa, and the vibrant location to the thriving revitalized location at Kakaako. You will enjoy the resort-like amenities which include a fitness center, tennis courts, putting green, BBQs, theater, and 24-hour security. The swimming pool is currently under renovation and will include a hot tub and wonderful lounging areas when it is completed. Maintenance fees include Cable TV, Internet, Water, Sewer, and Common Areas. A pet-friendly (25 lbs), and VA-approved building, must see to truly appreciate this turnkey condo. **Sale Conditions:** None **Schools:** [Kaahumanu](#), [Stevenson](#), [Mckinley](#) * [Request Showing](#), [Photos](#), [History](#), [Maps](#), [Deed](#), [Watch List](#), [Tax Info](#)





Address	Price	Bd & Bth	Living / Avg.	Land Avg.	Lanai	Occ.	FL	DOM
1288 Kapiolani Boulevard I-1808 (West Tower)	\$1,098,000	3 & 2/0	1,206 \$910	0 \$inf	42	45%	18	240

Address	Tax Maint. Ass.	Assessed Land	Assessed Building	Assessed Total	Ratio	Year & Remodeled
1288 Kapiolani Boulevard I-1808 (West Tower)	\$381 \$1,262 \$0	\$74,500	\$975,900	\$1,050,400	105%	2007 & 2020

[1288 Kapiolani Boulevard I-1808 \(West Tower\)](#) - MLS#: [202325814](#) - Original price was \$1,128,000 - Welcome to Moana Pacific. One of the better values in the Metro town location for a luxury/modern 3 bedroom 2 Bath, 2 Parking (side-by-side) with less than \$950.00 price per square foot (Great Value). Built in 2007, where there is good living square footage, sprinklers, and a superb location in the heart of Honolulu. Quality features include a fully remodeled kitchen in 2020 (\$72,000 in cost), countertops, cabinetry, newer tile flooring, and replacement of AC components (\$7,900), and many others to appreciate. Moana Pacific is a secured high-rise condo with short distances to Ala Moana Shopping Center, restaurants, beaches, shops, surf spots, medical facilities, UH Manoa, and the vibrant location to the thriving revitalized location at Kakaako. You will enjoy the resort-like amenities which include a fitness center, tennis courts, putting green, BBQs, theater, and 24-hour security. The swimming pool is currently under renovation and will include a hot tub and wonderful lounging areas when it is completed. Maintenance fees include Cable TV, Internet, Water, Sewer, and Common Areas. A pet-friendly (25 lbs), and VA-approved building, must see to truly appreciate this turnkey condo. **Region:** Metro **Neighborhood:** Kakaako **Condition:** Excellent **Parking:** Assigned, Covered - 1, Garage, Guest **Total Parking:** 2 **View:** City, Mountain, Ocean, Sunset **Frontage:** Pool: **Zoning:** Kak - Kakaako Community Development Project **Sale Conditions:** None **Schools:** [Kaahumanu](#), [Stevenson](#), [Mckinley](#) * [Request Showing](#), [Photos](#), [History](#), [Maps](#), [Deed](#), [Watch List](#), [Tax Info](#)

DOM = Days on Market, Occ. = Occupancy, FL = Floor Number