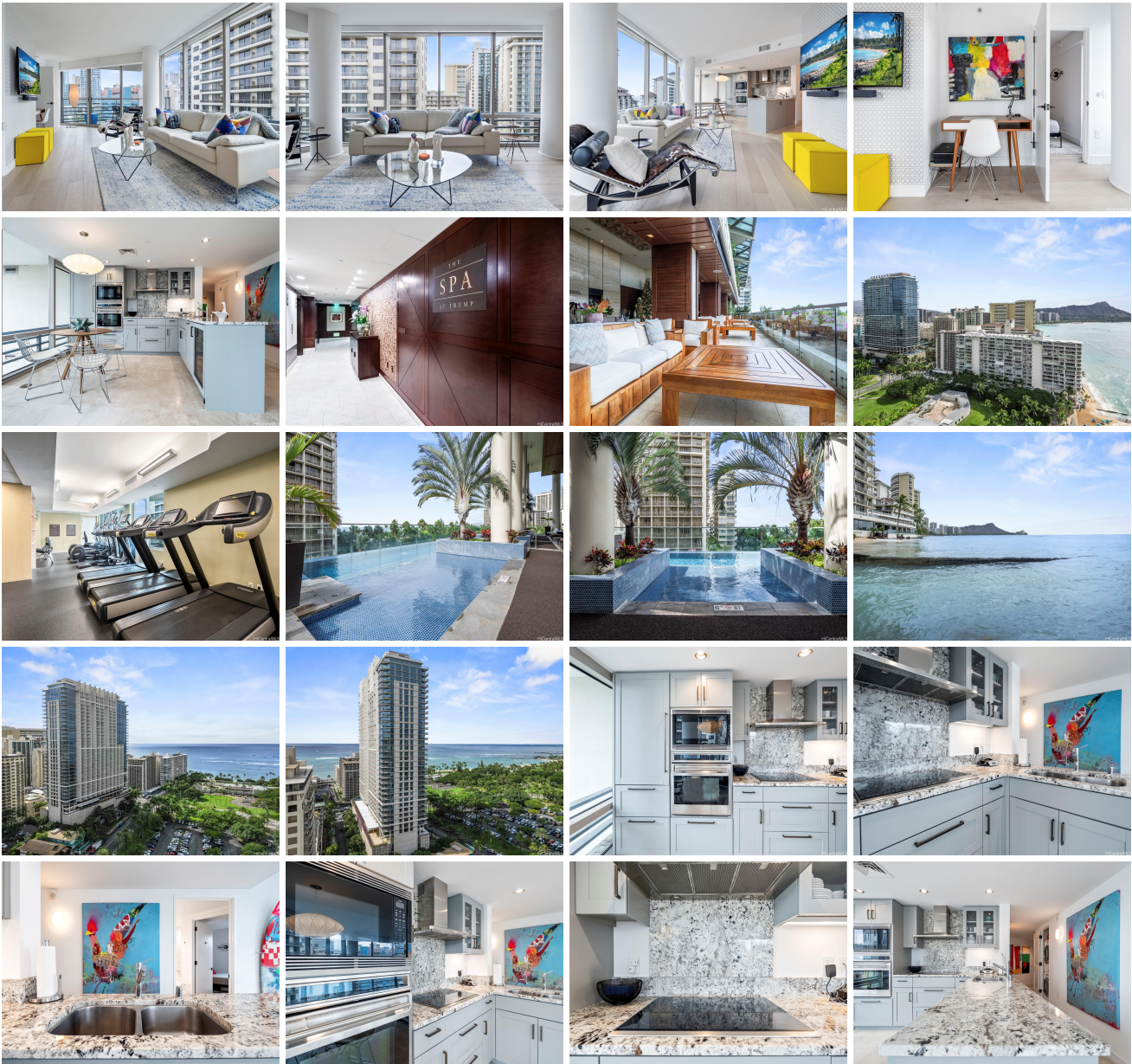
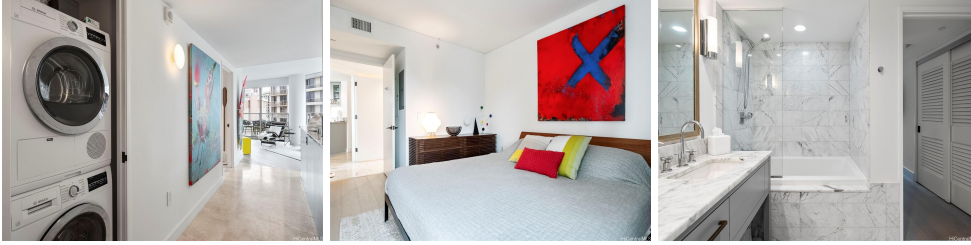


# Trump Tower Waikiki 223 Saratoga Road Unit 1202, Honolulu 96815 \* Trump Tower Waikiki \* \$915,000

Beds: <b>1</b>	MLS#: <b><a href="#">202325911</a>, FS</b>	Year Built: <b>2009</b>
Bath: <b>1/0</b>	Status: <b>Active</b>	Remodeled:
Living Sq. Ft.: <b>795</b>	List Date & DOM: <b>11-22-2023 &amp; 237</b>	Total Parking: <b>0</b>
Land Sq. Ft.: <b>0</b>	Condition: <b>Excellent</b>	<b><a href="#">Assessed Value</a></b>
Lanai Sq. Ft.: <b>73</b>	Frontage:	Building: <b>\$463,200</b>
Sq. Ft. Other: <b>0</b>	Tax/Year: <b>\$235/2023</b>	Land: <b>\$441,800</b>
Total Sq. Ft. <b>868</b>	Neighborhood: <b>Waikiki</b>	Total: <b>\$905,000</b>
Maint./Assoc. <b>\$1,385 / \$0</b>	<b><a href="#">Flood Zone</a>: Zone AE - Tool</b>	Stories / CPR: <b>21+ / No</b>
Parking: <b>None, Other</b>	Frontage:	
<b>Zoning: X6 - Resort Mixed Use Precinct</b>	View: <b>City, Mountain, Ocean</b>	

**Public Remarks:** Indulge in five-star service at this meticulously maintained private residence within one of the most luxurious hotels in Honolulu. As you step into the home, you'll be greeted by a recently painted interior adorned with white oak flooring, original artwork, and automated Hunter Douglas blinds. The attention to detail spans throughout, where brand new designer lighting from George Nelson (Herman Miller) and Arne Jacobsen illuminates each space with style. The kitchen has been upgraded with refinished cabinets, while the bathroom boasts exquisite details, including refinished vanity, travertine floors, marble tile floors, shower walls, and counters. An accent wall in the living room adds a touch of personality, complemented by a wall-mounted TV and a Sonos sound system for a cinematic experience. All-new designer furniture from Design Within Reach and carefully selected accents from Jonathan Adler, Design Within Reach, and Blu Dot contribute to an atmosphere of refined comfort. Beyond the private quarters, residents can indulge in luxurious, resort amenities, including five-star hotel services, an infinity pool, concierge services, and access to a world-class spa. **Sale Conditions:** None  
**Schools:** , , \* [Request Showing](#), [Photos](#), [History](#), [Maps](#), [Deed](#), [Watch List](#), [Tax Info](#)





Address	Price	Bd & Bth	Living / Avg.	Land   Avg.	Lanai	Occ.	FL	DOM
<a href="#">223 Saratoga Road 1202</a>	<b>\$915,000</b>	1 & 1/0	795   \$1,151	0   \$inf	73	2%	12	237

Address	Tax   Maint.   Ass.	Assessed Land	Assessed Building	Assessed Total	Ratio	Year & Remodeled
<a href="#">223 Saratoga Road 1202</a>	\$235   \$1,385   \$0	\$441,800	\$463,200	\$905,000	101%	2009 & NA

[223 Saratoga Road 1202](#) - MLS#: [202325911](#) - Indulge in five-star service at this meticulously maintained private residence within one of the most luxurious hotels in Honolulu. As you step into the home, you'll be greeted by a recently painted interior adorned with white oak flooring, original artwork, and automated Hunter Douglas blinds. The attention to detail spans throughout, where brand new designer lighting from George Nelson (Herman Miller) and Arne Jacobsen illuminates each space with style. The kitchen has been upgraded with refinished cabinets, while the bathroom boasts exquisite details, including refinished vanity, travertine floors, marble tile floors, shower walls, and counters. An accent wall in the living room adds a touch of personality, complemented by a wall-mounted TV and a Sonos sound system for a cinematic experience. All-new designer furniture from Design Within Reach and carefully selected accents from Jonathan Adler, Design Within Reach, and Blu Dot contribute to an atmosphere of refined comfort. Beyond the private quarters, residents can indulge in luxurious, resort amenities, including five-star hotel services, an infinity pool, concierge services, and access to a world-class spa.

**Region:** Metro **Neighborhood:** Waikiki **Condition:** Excellent **Parking:** None, Other **Total Parking:** 0 **View:** City, Mountain, Ocean **Frontage:** **Pool:** **Zoning:** X6 - Resort Mixed Use Precinct **Sale Conditions:** None **Schools:** , , \* [Request Showing](#), [Photos](#), [History](#), [Maps](#), [Deed](#), [Watch List](#), [Tax Info](#)

DOM = Days on Market, Occ. = Occupancy, FL = Floor Number