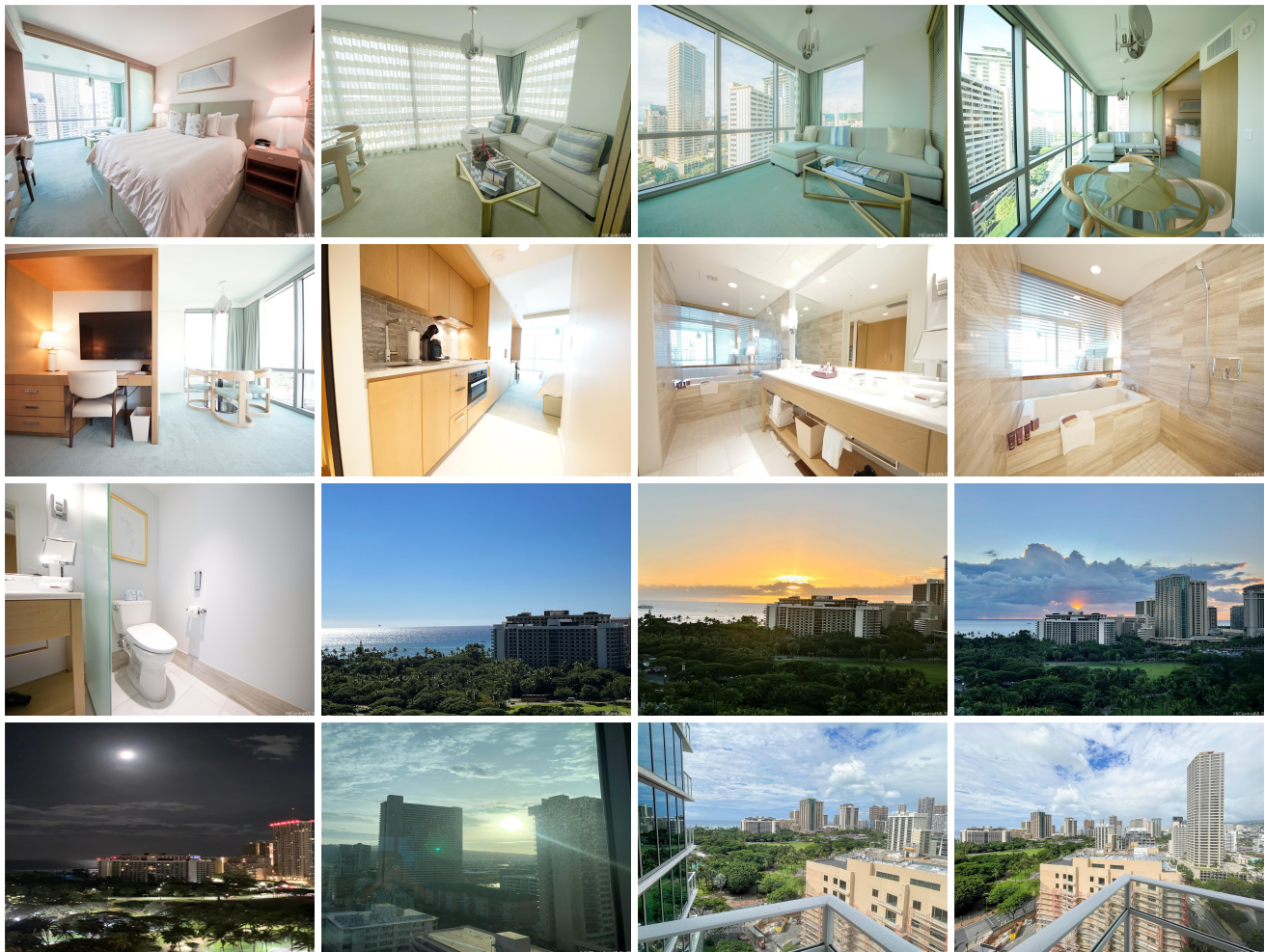


# The Ritz-Carlton Residences - 383 Kalaim 383 Kalaimoku Street Unit 1601, Honolulu 96815

**\* \$625,000 \* Originally \$650,000**

Beds: <b>0</b> Bath: <b>1/0</b> Living Sq. Ft.: <b>501</b> Land Sq. Ft.: <b>0</b> Lanai Sq. Ft.: <b>39</b> Sq. Ft. Other: <b>0</b> Total Sq. Ft. <b>540</b> Maint./Assoc. <b>\$1,066 / \$0</b> Parking: <b>Other</b> <b>Zoning: X6 - Resort Mixed Use Precinct</b>	MLS#: <b>202326144, FS</b> Status: <b>Active</b> List Date & DOM: <b>11-28-2023 &amp; 212</b> Condition: <b>Excellent</b> Frontage: Tax/Year: <b>\$223/2023</b> Neighborhood: <b>Waikiki</b> <b>Flood Zone: Zone AO - Tool</b> Frontage:	Year Built: <b>2014</b> Remodeled: Total Parking: <b>0</b> <a href="#">Assessed Value</a> Building: <b>\$703,200</b> Land: <b>\$61,700</b> Total: <b>\$764,900</b> Stories / CPR: / <b>No</b> View: <b>City, Mountain, Ocean</b>
-----------------------------------------------------------------------------------------------------------------------------------------------------------------------------------------------------------------------------------------------------------------------------------------------	------------------------------------------------------------------------------------------------------------------------------------------------------------------------------------------------------------------------------------------------------------------	----------------------------------------------------------------------------------------------------------------------------------------------------------------------------------------------------------------------------------------------------------

**Public Remarks:** Enjoy world-class amenities in the Ritz-Carlton Waikiki Residences. This corner-end studio (Ewa Tower/Tower 1) comes fully furnished and boasts panoramic views from the mountain to the sea. Conveniently located in Waikiki near shopping, dining, and white-sand beaches. **Sale Conditions:** None **Schools:** , , \* [Request Showing](#), [Photos](#), [History](#), [Maps](#), [Deed](#), [Watch List](#), [Tax Info](#)



Address	Price	Bd & Bth	Living / Avg.	Land   Avg.	DOM
<a href="#">383 Kalaimoku Street 1601</a>	<b>\$625,000</b>	0 & 1/0	501   \$1,248	0   \$inf	212

Address	Tax   Maint.   Ass.	Assessed Land	Assessed Building	Assessed Total	Ratio	Year & Remodeled
<a href="#">383 Kalaimoku Street 1601</a>	\$223   \$1,066   \$0	\$61,700	\$703,200	\$764,900	82%	2014 & NA

[383 Kalaimoku Street 1601](#) - MLS#: [202326144](#) - Original price was \$650,000 - Enjoy world-class amenities in the Ritz-Carlton Waikiki Residences. This corner-end studio (Ewa Tower/Tower 1) comes fully furnished and boasts panoramic views from the mountain to the sea. Conveniently located in Waikiki near shopping, dining, and white-sand beaches. **Region:** Metro **Neighborhood:** Waikiki **Condition:** Excellent **Parking:** Other **Total Parking:** 0 **View:** City, Mountain, Ocean **Frontage:** **Pool:** **Zoning:** X6 - Resort Mixed Use Precinct **Sale Conditions:** None **Schools:** , , \* [Request Showing](#), [Photos](#), [History](#), [Maps](#), [Deed](#), [Watch List](#), [Tax Info](#)

DOM = Days on Market