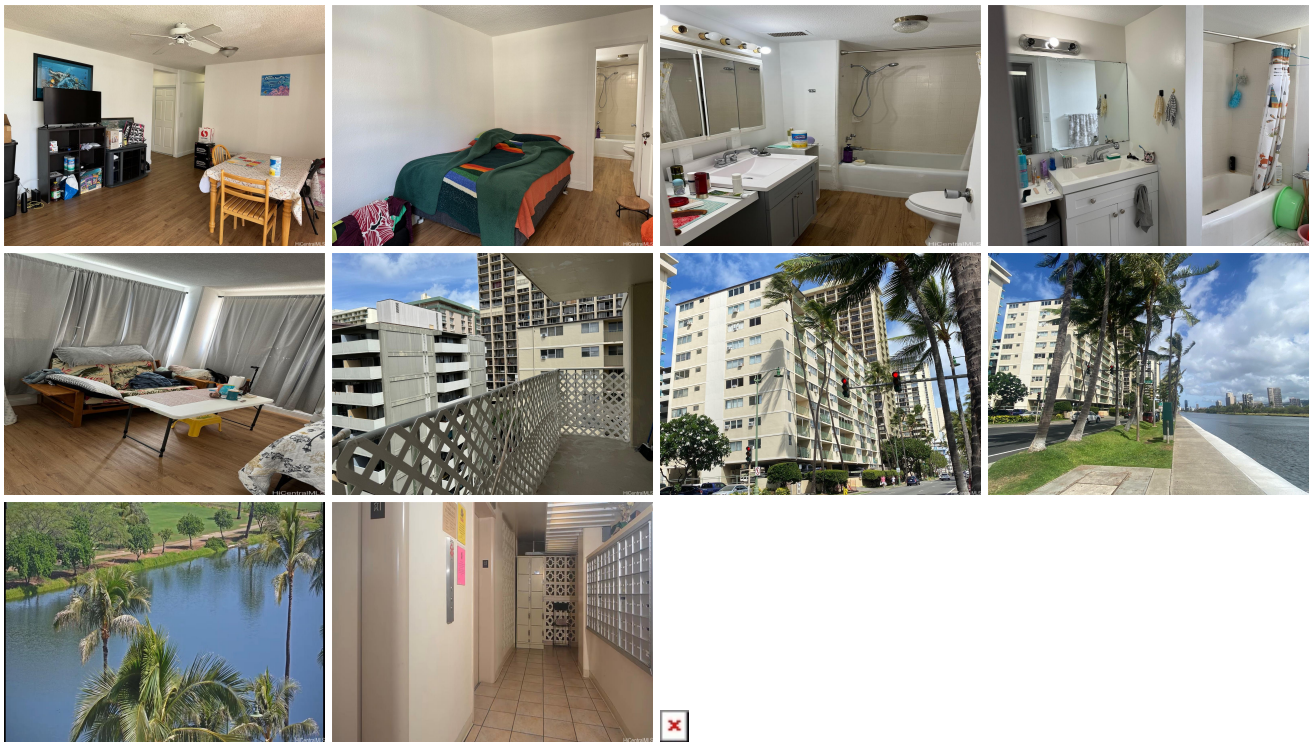


**Ala Wai palms 2355 Ala Wai Boulevard Unit 908, Honolulu 96815 \* \$449,000**

Bed: <b>2</b>	MLS#: <b>202326396, FS</b>	Year Built: <b>1961</b>
Bath: <b>2/0</b>	Status: <b>Active</b>	Remodeled:
Living Sq. Ft.: <b>918</b>	List Date & DOM: <b>12-20-2023 &amp; 193</b>	Total Parking: <b>1</b>
Land Sq. Ft.: <b>16,683</b>	Condition: <b>Average</b>	<a href="#">Assessed Value</a>
Lanai Sq. Ft.: <b>106</b>	Frontage:	Building: <b>\$385,600</b>
Sq. Ft. Other: <b>0</b>	Tax/Year: <b>\$140/2023</b>	Land: <b>\$95,700</b>
Total Sq. Ft. <b>1,024</b>	Neighborhood: <b>Waikiki</b>	Total: <b>\$481,300</b>
Maint./Assoc. <b>\$979 / \$0</b>	<a href="#">Flood Zone</a> : <b>Zone AE - Tool</b>	Stories / CPR: <b>8-14 / No</b>
Parking: <b>Assigned, Covered - 1</b>	Frontage:	
<a href="#">Zoning</a> : <b>X2 - Apartment Precinct</b>	View: <b>City</b>	

**Public Remarks:** MOTIVATED SELLER. This corner/end unit has cool breezes. SPACIOUS FLOOR PLAN Includes a large Living Area and comfortable ventilation with windows all around the kitchen, dining area, and both bathrooms. Conveniently located close to the International Market Place, top dining, and all that Waikiki has to offer! Close walk to beautiful Waikiki Beaches. The Ala Wai canal steps away. Sold "As Is". **Sale Conditions:** None **Schools:** , , \* [Request Showing](#), [Photos](#), [History](#), [Maps](#), [Deed](#), [Watch List](#), [Tax Info](#)



Address	Price	Bd & Bth	Living / Avg.	Land   Avg.	DOM
<a href="#">2355 Ala Wai Boulevard 908</a>	<a href="#">\$449,000</a>	2 & 2/0	918   \$489	16,683   \$27	193

Address	Tax   Maint.   Ass.	Assessed Land	Assessed Building	Assessed Total	Ratio	Year & Remodeled
<a href="#">2355 Ala Wai Boulevard 908</a>	\$140   \$979   \$0	\$95,700	\$385,600	\$481,300	93%	1961 & NA

[2355 Ala Wai Boulevard 908](#) - MLS#: [202326396](#) - MOTIVATED SELLER. This corner/end unit has cool breezes. SPACIOUS FLOOR PLAN Includes a large Living Area and comfortable ventilation with windows all around the kitchen, dining area, and both bathrooms. Conveniently located close to the International Market Place, top dining, and all that Waikiki has to offer! Close walk to beautiful Waikiki Beaches. The Ala Wai canal steps away. Sold "As Is". **Region:** Metro **Neighborhood:** Waikiki **Condition:** Average **Parking:** Assigned, Covered - 1 **Total Parking:** 1 **View:** City **Frontage:** **Pool:** **Zoning:** X2 - Apartment Precinct **Sale Conditions:** None **Schools:** , , \* [Request Showing](#), [Photos](#), [History](#), [Maps](#), [Deed](#), [Watch List](#), [Tax Info](#)

DOM = Days on Market