

Anaha - 1108 Auahi 1108 Auahi Street Unit 1408, Honolulu 96814 * \$1,195,000 * Originally

\$1,295,000

Beds: **1**

MLS#: **202326482, FS**

Year Built: **2017**

Bath: **1/0**

Status: **Active Under Contract**

Remodeled:

Living Sq. Ft.: **914**

List Date & DOM: **12-13-2023 & 193**

Total Parking: **1**

Land Sq. Ft.: **0**

Condition: **Excellent**

[Assessed Value](#)

Lanai Sq. Ft.: **0**

Frontage:

Building: **\$1,166,500**

Sq. Ft. Other: **0**

Tax/Year: **\$534/2023**

Land: **\$45,200**

Total Sq. Ft. **914**

Neighborhood: **Kakaako**

Total: **\$1,211,700**

Maint./Assoc. **\$1,458 / \$0**

[Flood Zone](#): **Zone AE - Tool**

Stories / CPR: **8-14 / No**

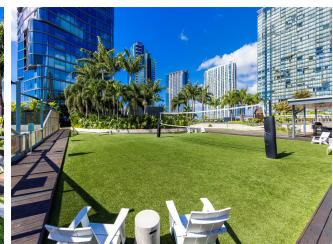
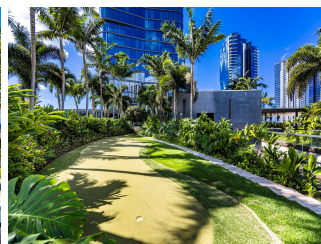
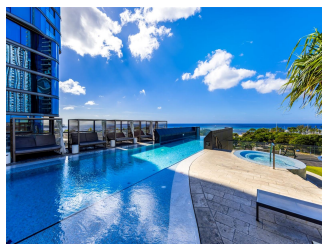
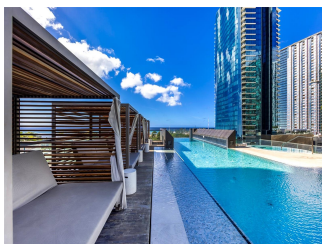
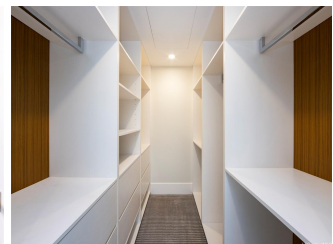
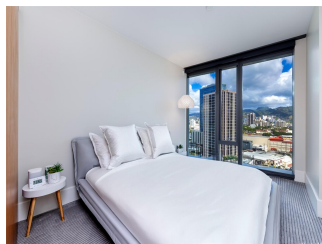
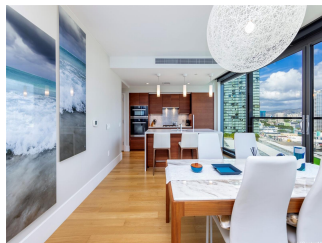
Parking: **Assigned, Covered - 1, Garage, Secured Entry**

Frontage:

[Zoning](#): **Kak - Kakaako Community Development Project**

View: **City, Mountain, Ocean**

Public Remarks: Anaha stands as one of Honolulu's most coveted luxury condominium destinations in Ward Village, an award-winning community in Kaka'ako where a "Work, Play, Life" lifestyle is at the forefront. This spacious fully furnished 1 bedroom, 1 bath, 914 sq.ft. residence enjoys dynamic 180-degree views stretching from Magic Island and the Pacific Ocean to urban Honolulu and the majestic Ko'olau mountains. A well-designed floor plan features an open-concept kitchen, dining, and living areas, a resort-style bathroom with double vanity and walk-in shower, a spacious walk-in closet with elegant built-ins, and a private bedroom space looking toward tranquil mountain views. Anaha features a host of resort amenities including an iconic infinity-edge pool with a transparent overhang, a full-size tennis court/pickleball courts, volleyball court, multiple barbecue areas, kid's play area, golf simulation, billiards room, movie theater room, chef's kitchen, and much more. If you're looking for the Idyllic Hawaii lifestyle, put Anaha #1408 on your must-see list. **Sale Conditions:** None **Schools:** [Kaahumanu, Stevenson, Mckinley](#) * [Request Showing](#), [Photos](#), [History](#), [Maps](#), [Deed](#), [Watch List](#), [Tax Info](#)





Address	Price	Bd & Bth	Living / Avg.	Land Avg.	DOM
1108 Auahi Street 1408	\$1,195,000	1 & 1/0	914 \$1,307	0 \$inf	193

Address	Tax Maint. Ass.	Assessed Land	Assessed Building	Assessed Total	Ratio	Year & Remodeled
1108 Auahi Street 1408	\$534 \$1,458 \$0	\$45,200	\$1,166,500	\$1,211,700	99%	2017 & NA

[1108 Auahi Street 1408](#) - MLS#: [202326482](#) - Original price was \$1,295,000 - Anaha stands as one of Honolulu's most coveted luxury condominium destinations in Ward Village, an award-winning community in Kaka'ako where a "Work, Play, Life" lifestyle is at the forefront. This spacious fully furnished 1 bedroom, 1 bath, 914 sq.ft. residence enjoys dynamic 180-degree views stretching from Magic Island and the Pacific Ocean to urban Honolulu and the majestic Ko'olau mountains. A well-designed floor plan features an open-concept kitchen, dining, and living areas, a resort-style bathroom with double vanity and walk-in shower, a spacious walk-in closet with elegant built-ins, and a private bedroom space looking toward tranquil mountain views. Anaha features a host of resort amenities including an iconic infinity-edge pool with a transparent overhang, a full-size tennis court/pickleball courts, volleyball court, multiple barbecue areas, kid's play area, golf simulation, billiards room, movie theater room, chef's kitchen, and much more. If you're looking for the Idyllic Hawaii lifestyle, put Anaha #1408 on your must-see list. **Region:** Metro **Neighborhood:** Kakaako **Condition:** Excellent **Parking:** Assigned, Covered - 1, Garage, Secured Entry **Total Parking:** 1 **View:** City, Mountain, Ocean **Frontage:** Pool: **Zoning:** Kak - Kakaako Community Development Project **Sale Conditions:** None **Schools:** [Kaahumanu](#), [Stevenson](#), [Mckinley](#) * [Request Showing](#), [Photos](#), [History](#), [Maps](#), [Deed](#), [Watch List](#), [Tax Info](#)

DOM = Days on Market