

**Nuuanu Park Place 1720 Huna Street Unit B508, Honolulu 96817 \* Nuuanu Park Place \***

**\$385,000 \* Originally \$442,000**

Beds: **2**  
 Bath: **1/0**  
 Living Sq. Ft.: **850**  
 Land Sq. Ft.: **86,249**  
 Lanai Sq. Ft.: **40**  
 Sq. Ft. Other: **0**  
 Total Sq. Ft. **890**  
 Maint./Assoc. **\$1,008 / \$0**  
 Parking: **Covered - 1**

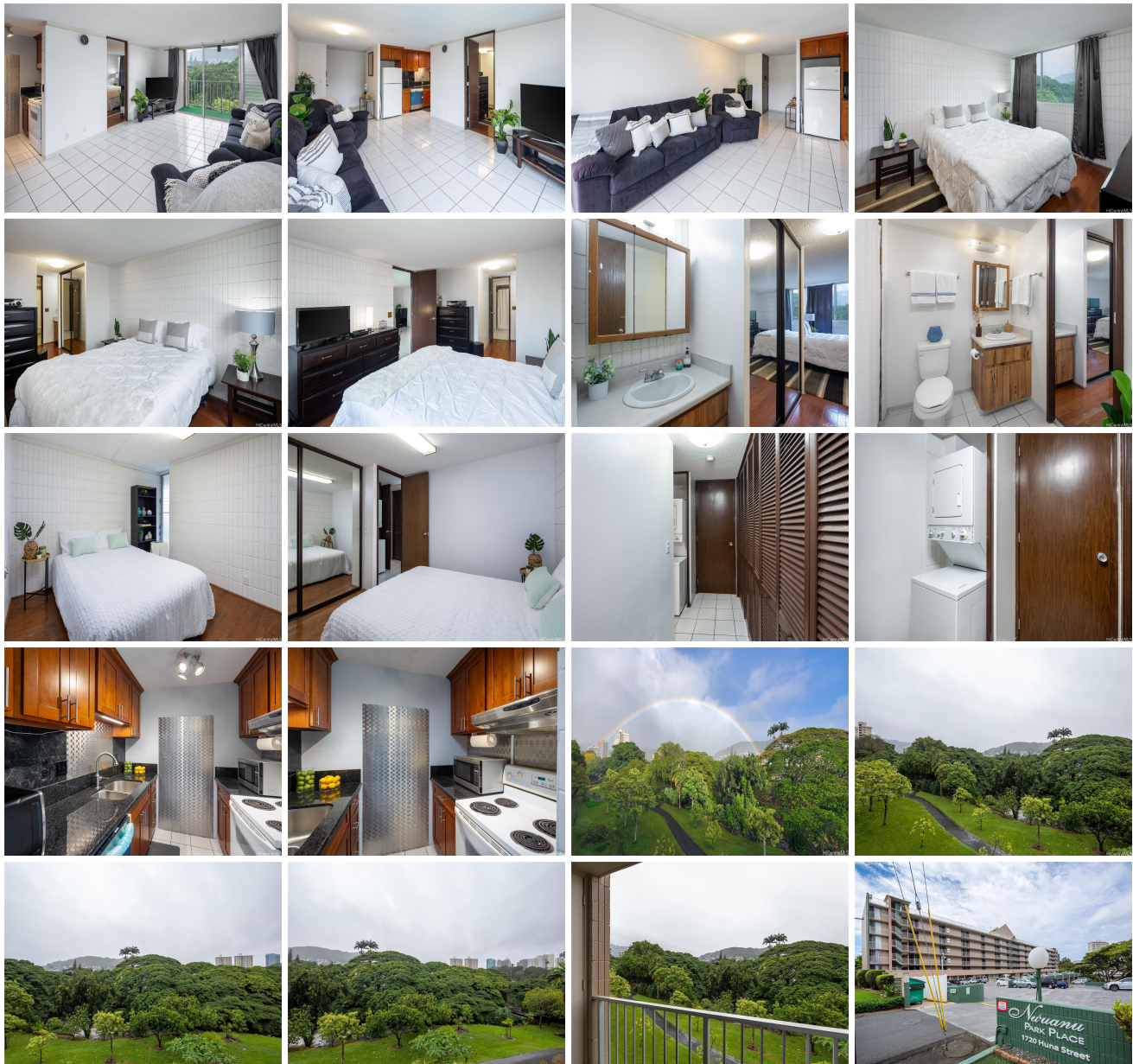
MLS#: **202326489, FS**  
 Status: **Active**  
 List Date & DOM: **12-04-2023 & 205**  
 Condition: **Average**  
 Frontage:  
 Tax/Year: **\$87/2023**  
 Neighborhood: **Kuakini**  
**Flood Zone: Zone X - Tool**

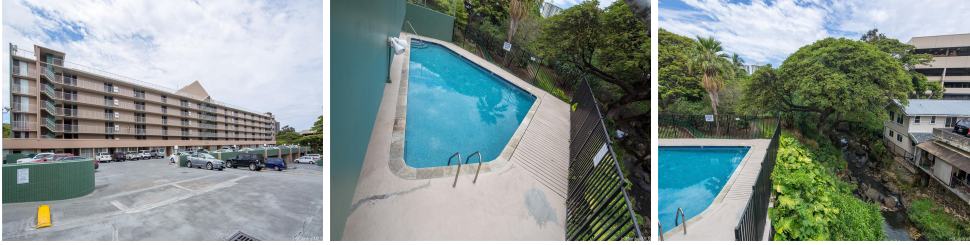
Year Built: **1981**  
 Remodeled:  
 Total Parking: **1**  
[Assessed Value](#)  
 Building: **\$299,600**  
 Land: **\$98,000**  
 Total: **\$397,600**  
 Stories / CPR: / **No**

**Zoning: 11 - A-1 Low Density Apartment**

Frontage:  
 View: **Garden**

**Public Remarks:** HUGE \$57,000 Price Improvement making this a great value! A Nature Lover's Paradise! Live in a space that brings you serenity. Nuuanu Park Place overlooks the Queen Liliuokalani Botanical Gardens which you can see from the lanai and primary bedroom of this unit. Relax to the sound of the stream. This property is priced to sell and comes with a covered parking stall near the elevator. Seller is currently renting a 2nd stall and can possibly assist with the buyer taking over the rented parking space. There is a washer/dryer in the unit. Conveniently located near Downtown Honolulu and minutes away from both East and West freeway on ramps and the original Liliha Bakery. Fresh paint, brand new window AC unit & dishwasher. Building amenities include a swimming pool, garden and BBQ and recreation area. Contact your agent today to set up your private showing. **Sale Conditions:** None **Schools:** , , \* [Request Showing](#), [Photos](#), [History](#), [Maps](#), [Deed](#), [Watch List](#), [Tax Info](#)





Address	Price	Bd & Bth	Living / Avg.	Land   Avg.	Lanai	Occ.	FL	DOM
<a href="#">1720 Huna Street B508</a>	<b>\$385,000</b>	2 & 1/0	850   \$453	86,249   \$4	40	77%	5	205

Address	Tax   Maint.   Ass.	Assessed Land	Assessed Building	Assessed Total	Ratio	Year & Remodeled
<a href="#">1720 Huna Street B508</a>	\$87   \$1,008   \$0	\$98,000	\$299,600	\$397,600	97%	1981 & NA

[1720 Huna Street B508](#) - MLS#: [202326489](#) - Original price was \$442,000 - HUGE \$57,000 Price Improvement making this a great value! A Nature Lover's Paradise! Live in a space that brings you serenity. Nuuanu Park Place overlooks the Queen Liliuokalani Botanical Gardens which you can see from the lanai and primary bedroom of this unit. Relax to the sound of the stream. This property is priced to sell and comes with a covered parking stall near the elevator. Seller is currently renting a 2nd stall and can possibly assist with the buyer taking over the rented parking space. There is a washer/dryer in the unit. Conveniently located near Downtown Honolulu and minutes away from both East and West freeway on ramps and the original Liliha Bakery. Fresh paint, brand new window AC unit & dishwasher. Building amenities include a swimming pool, garden and BBQ and recreation area. Contact your agent today to set up your private showing. **Region:** Metro  
**Neighborhood:** Kuakini **Condition:** Average **Parking:** Covered - 1 **Total Parking:** 1 **View:** Garden **Frontage:** **Pool:**  
**Zoning:** 11 - A-1 Low Density Apartment **Sale Conditions:** None **Schools:** , , \* [Request Showing](#), [Photos](#), [History](#), [Maps](#), [Deed](#), [Watch List](#), [Tax Info](#)

DOM = Days on Market, Occ. = Occupancy, FL = Floor Number