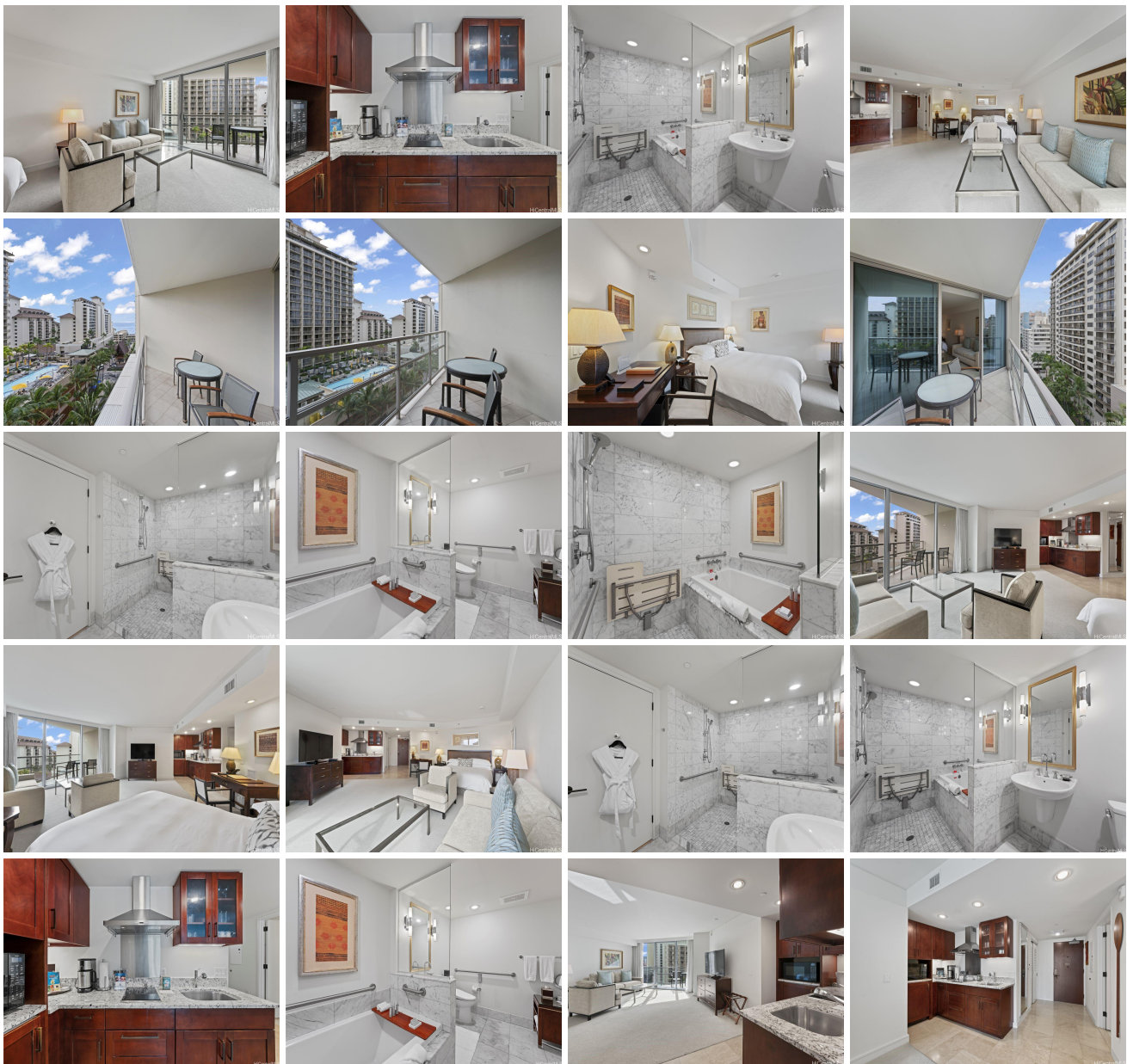


Trump Tower Waikiki 223 Saratoga Road Unit 1012, Honolulu 96815 * \$390,000 *

Originally \$490,000

Beds: 0	MLS#: 202328147, FS	Year Built: 2009
Bath: 1/0	Status: Active Under Contract	Remodeled:
Living Sq. Ft.: 559	List Date & DOM: 12-19-2023 & 204	Total Parking: 0
Land Sq. Ft.: 0	Condition: Excellent	Assessed Value
Lanai Sq. Ft.: 75	Frontage:	Building: \$206,700
Sq. Ft. Other: 0	Tax/Year: \$693/2023	Land: \$320,700
Total Sq. Ft. 634	Neighborhood: Waikiki	Total: \$527,400
Maint./Assoc. \$1,012 / \$0	Flood Zone : Zone AE - Tool	Stories / CPR: 21+ / No
Parking: Other	Frontage:	
Zoning : X6 - Resort Mixed Use Precinct	View: City, Mountain, Ocean	

Public Remarks: Enjoy luxury living at Ka La'i Waikiki Beach, LXR Hotels & Resorts Hotel/Condo! (former Trump International Hotel Waikiki) This Studio unit comes fully furnished with all linens & Kitchenware and Ocean and Mountain View! Top notch amenities include infinity pool, concierge, valet parking and a full service spa. Including in purchase are upscale appliances, granite counter tops and travertine tile flooring. Steps away from Waikiki's famous white sand beaches. **Sale Conditions:** None **Schools:** , , * [Request Showing](#), [Photos](#), [History](#), [Maps](#), [Deed](#), [Watch List](#), [Tax Info](#)





Address	Price	Bd & Bth	Living / Avg.	Land Avg.	DOM
223 Saratoga Road 1012	\$390,000	0 & 1/0	559 \$698	0 \$inf	204

Address	Tax Maint. Ass.	Assessed Land	Assessed Building	Assessed Total	Ratio	Year & Remodeled
223 Saratoga Road 1012	\$693 \$1,012 \$0	\$320,700	\$206,700	\$527,400	74%	2009 & NA

[223 Saratoga Road 1012](#) - MLS#: [202328147](#) - Original price was \$490,000 - Enjoy luxury living at Ka La'i Waikiki Beach, LXR Hotels & Resorts Hotel/Condo! (former Trump International Hotel Waikiki) This Studio unit comes fully furnished with all linens & Kitchenware and Ocean and Mountain View! Top notch amenities include infinity pool, concierge, valet parking and a full service spa. Including in purchase are upscale appliances, granite counter tops and travertine tile flooring. Steps away from Waikiki's famous white sand beaches. **Region:** Metro **Neighborhood:** Waikiki **Condition:** Excellent **Parking:** Other **Total Parking:** 0 **View:** City, Mountain, Ocean **Frontage:** **Pool:** **Zoning:** X6 - Resort Mixed Use Precinct **Sale Conditions:** None **Schools:** , , * [Request Showing](#), [Photos](#), [History](#), [Maps](#), [Deed](#), [Watch List](#), [Tax Info](#)

DOM = Days on Market