

Canterbury PI 1910 Ala Moana Boulevard Unit 23B, Honolulu 96815 * Canterbury PI *

\$888,000

Beds: **2**
 Bath: **2/0**
 Living Sq. Ft.: **1,380**
 Land Sq. Ft.: **35,371**
 Lanai Sq. Ft.: **0**
 Sq. Ft. Other: **0**
 Total Sq. Ft. **1,380**
 Maint./Assoc. **\$2,030 / \$0**
 Parking: **Assigned, Covered - 1, Garage**

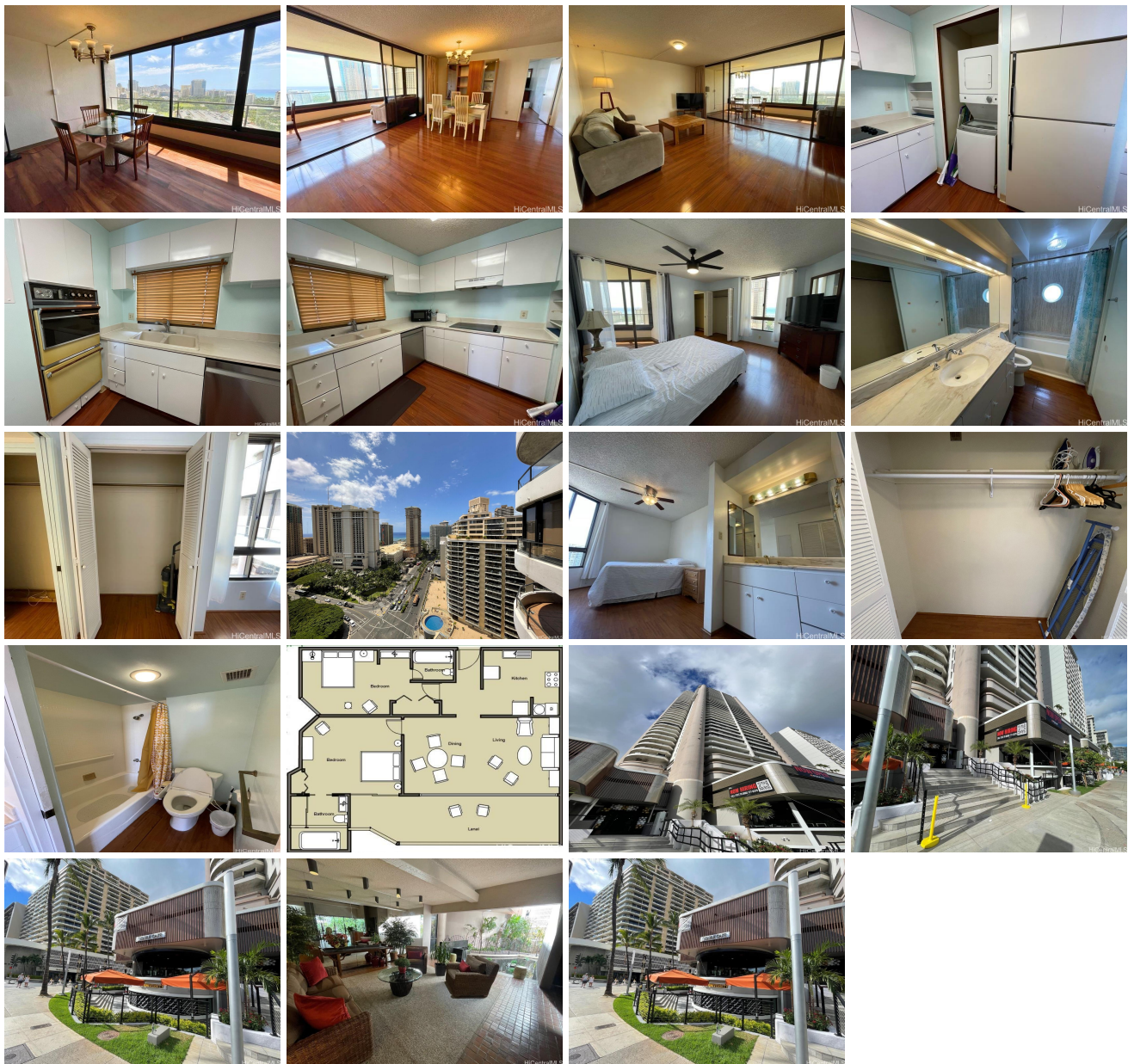
MLS#: **202328391, FS**
 Status: **Active**
 List Date & DOM: **01-02-2024 & 197**
 Condition: **Above Average**
 Frontage:
 Tax/Year: **\$262/2023**
 Neighborhood: **Waikiki**
Flood Zone: Zone AE - Tool

Year Built: **1978**
 Remodeled:
 Total Parking: **1**
[Assessed Value](#)
 Building: **\$661,900**
 Land: **\$59,000**
 Total: **\$720,900**
 Stories / CPR: **Three+ / No**

Zoning: X2 - Apartment Precinct

View: **City, Coastline, Diamond Head, Mountain, Ocean, Sunrise**

Public Remarks: A perfect Diamond Head and Ocean View unit from a secured residential condo just across the street from Hilton Hawaiian Village is a great investment. It has 2 spacious bedrooms and 2 bathrooms with an enclosed Lanai where you can also enjoy the scenic view of Fort DeRussy Park and Waikiki. It is only a walking distance from the shopping centers, restaurants, beach, and many more. This is a FEE Simple unit. **Sale Conditions:** None **Schools:** , , * [Request Showing](#), [Photos](#), [History](#), [Maps](#), [Deed](#), [Watch List](#), [Tax Info](#)



Address	Price	Bd & Bth	Living / Avg.	Land Avg.	Lanai	Occ.	FL	DOM
1910 Ala Moana Boulevard 23B	\$888,000	2 & 2/0	1,380 \$643	35,371 \$25	0	1%	23	197

Address	Tax Maint. Ass.	Assessed Land	Assessed Building	Assessed Total	Ratio	Year & Remodeled
1910 Ala Moana Boulevard 23B	\$262 \$2,030 \$0	\$59,000	\$661,900	\$720,900	123%	1978 & NA

[1910 Ala Moana Boulevard 23B](#) - MLS#: [202328391](#) - A perfect Diamond Head and Ocean View unit from a secured residential condo just across the street from Hilton Hawaiian Village is a great investment. It has 2 spacious bedrooms and 2 bathrooms with an enclosed Lanai where you can also enjoy the scenic view of Fort DeRussy Park and Waikiki. It is only a walking distance from the shopping centers, restaurants, beach, and many more. This is a FEE Simple unit. **Region:** Metro **Neighborhood:** Waikiki **Condition:** Above Average **Parking:** Assigned, Covered - 1, Garage **Total Parking:** 1 **View:** City, Coastline, Diamond Head, Mountain, Ocean, Sunrise **Frontage:** **Pool:** **Zoning:** X2 - Apartment Precinct **Sale Conditions:** None **Schools:** , , * [Request Showing](#), [Photos](#), [History](#), [Maps](#), [Deed](#), [Watch List](#), [Tax Info](#)

DOM = Days on Market, Occ. = Occupancy, FL = Floor Number