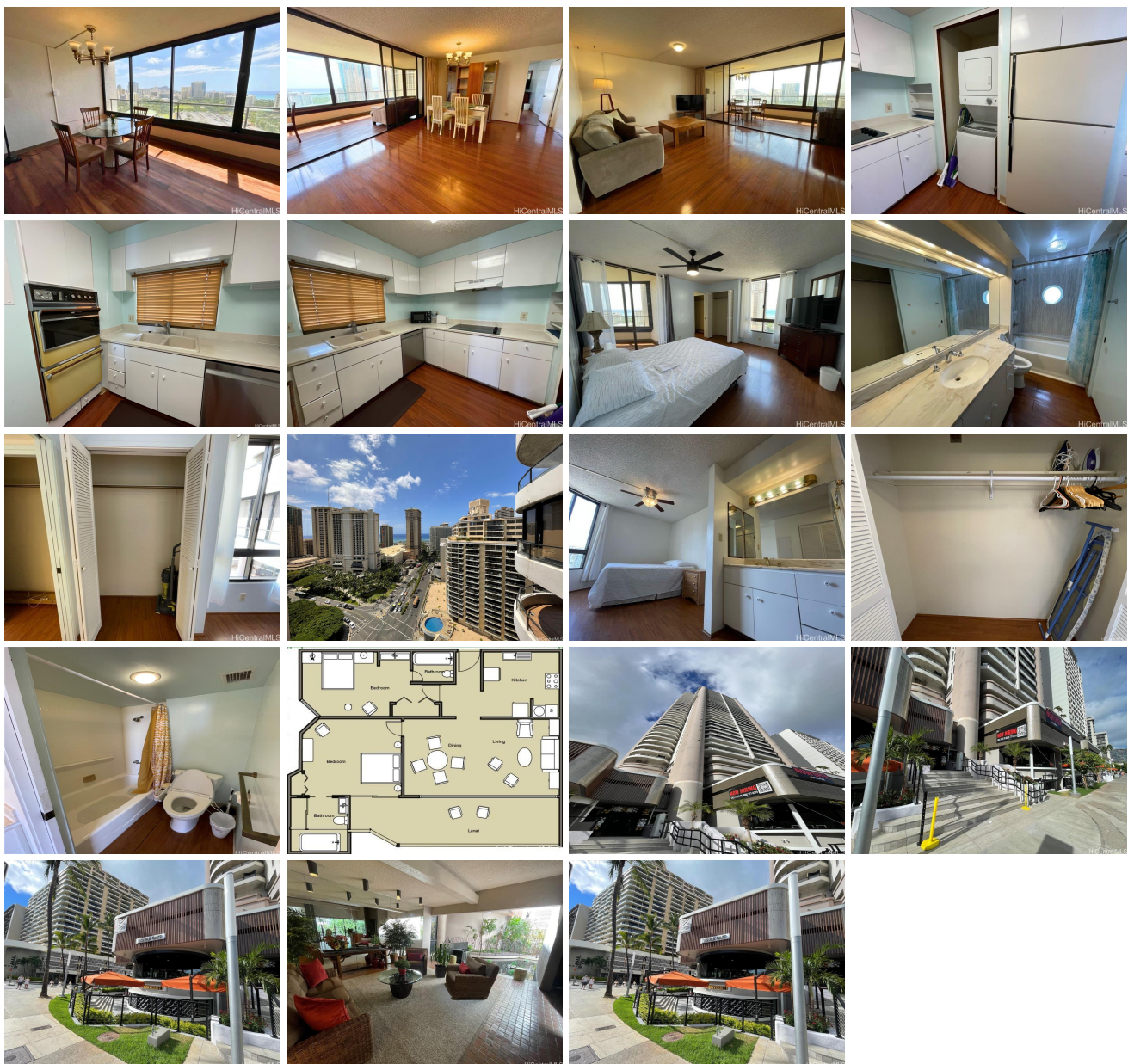


Canterbury PI 1910 Ala Moana Boulevard Unit 23B, Honolulu 96815 * \$888,000

Beds: 2	MLS#: 202328391, FS	Year Built: 1978
Bath: 2/0	Status: Active	Remodeled:
Living Sq. Ft.: 1,380	List Date & DOM: 01-02-2024 & 195	Total Parking: 1
Land Sq. Ft.: 35,371	Condition: Above Average	Assessed Value
Lanai Sq. Ft.: 0	Frontage:	Building: \$661,900
Sq. Ft. Other: 0	Tax/Year: \$262/2023	Land: \$59,000
Total Sq. Ft. 1,380	Neighborhood: Waikiki	Total: \$720,900
Maint./Assoc. \$2,030 / \$0	Flood Zone : Zone AE - Tool	Stories / CPR: Three+ / No
Parking: Assigned, Covered - 1, Garage	Frontage:	
Zoning : X2 - Apartment Precinct	View: City, Coastline, Diamond Head, Mountain, Ocean, Sunrise	

Public Remarks: A perfect Diamond Head and Ocean View unit from a secured residential condo just across the street from Hilton Hawaiian Village is a great investment. It has 2 spacious bedrooms and 2 bathrooms with an enclosed Lanai where you can also enjoy the scenic view of Fort DeRussy Park and Waikiki. It is only a walking distance from the shopping centers, restaurants, beach, and many more. This is a FEE Simple unit. **Sale Conditions:** None **Schools:** , , * [Request Showing, Photos, History, Maps, Deed, Watch List, Tax Info](#)



Address	Price	Bd & Bth	Living / Avg.	Land Avg.	DOM
1910 Ala Moana Boulevard 23B	\$888,000	2 & 2/0	1,380 \$643	35,371 \$25	195

Address	Tax Maint. Ass.	Assessed Land	Assessed Building	Assessed Total	Ratio	Year & Remodeled
1910 Ala Moana Boulevard 23B	\$262 \$2,030 \$0	\$59,000	\$661,900	\$720,900	123%	1978 & NA

[1910 Ala Moana Boulevard 23B](#) - MLS#: [202328391](#) - A perfect Diamond Head and Ocean View unit from a secured residential condo just across the street from Hilton Hawaiian Village is a great investment. It has 2 spacious bedrooms and 2 bathrooms with an enclosed Lanai where you can also enjoy the scenic view of Fort DeRussy Park and Waikiki. It is only a walking distance from the shopping centers, restaurants, beach, and many more. This is a FEE Simple unit. **Region:** Metro **Neighborhood:** Waikiki **Condition:** Above Average **Parking:** Assigned, Covered - 1, Garage **Total Parking:** 1 **View:** City, Coastline, Diamond Head, Mountain, Ocean, Sunrise **Frontage:** **Pool:** **Zoning:** X2 - Apartment Precinct **Sale Conditions:** None **Schools:** , , * [Request Showing](#), [Photos](#), [History](#), [Maps](#), [Deed](#), [Watch List](#), [Tax Info](#)

DOM = Days on Market