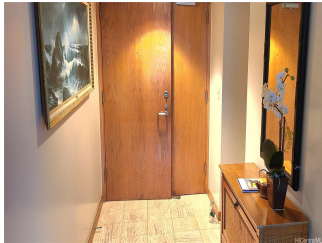


**Nauru Tower 1330 Ala Moana Boulevard Unit 1008, Honolulu 96814 \* Nauru Tower \***

**\$1,080,000**

Beds: <b>2</b>	MLS#: <b>202400029, FS</b>	Year Built: <b>1990</b>
Bath: <b>2/0</b>	Status: <b>Active</b>	Remodeled:
Living Sq. Ft.: <b>1,385</b>	List Date & DOM: <b>01-01-2024 &amp; 197</b>	Total Parking: <b>1</b>
Land Sq. Ft.: <b>135,472</b>	Condition: <b>Excellent</b>	<a href="#">Assessed Value</a>
Lanai Sq. Ft.: <b>150</b>	Frontage:	Building: <b>\$873,800</b>
Sq. Ft. Other: <b>0</b>	Tax/Year: <b>\$216/2023</b>	Land: <b>\$108,000</b>
Total Sq. Ft. <b>1,535</b>	Neighborhood: <b>Kakaako</b>	Total: <b>\$981,800</b>
Maint./Assoc. <b>\$2,021 / \$0</b>	<a href="#">Flood Zone</a> : <b>Zone AE - Tool</b>	Stories / CPR: <b>One / No</b>
Parking: <b>Assigned, Covered - 1, Guest, Secured Entry</b>	Frontage:	
<a href="#">Zoning</a> : <b>Kak - Kakaako Community Development Project</b>	View: <b>City, Ocean</b>	

**Public Remarks:** Largest 2 bedroom, 2 bathroom floor plan in building, 1385 SF plus 150 SF lanai, on cool East side to keep your energy bill low. Most desirable "Flex-Plan" layout. keep entire unit yourself, or use the separate front 1 bedroom, 1 bathroom for home office, or rent it as potential income, endless options. Nauru Tower is the luxury high rise in Kakaako, right across Ala Moana Beach and Mall. #1008 has a covered parking space, storage room, new paint, new W/D and Dishwasher, luxury kitchen with Sub-zero and granite. Resort style amenities, heated salt water pool, tennis, cabanas, BBQ, jogging paths, recreation deck, guest parking, e-charging, surf/bike racks, pickleball, 24 hour security. Unit can be delivered furnished or empty. Bring your toothbrush! **Sale Conditions:** None **Schools:** [Kaahumanu](#), [Stevenson](#), [Mckinley](#) \* [Request Showing](#), [Photos](#), [History](#), [Maps](#), [Deed](#), [Watch List](#), [Tax Info](#)



Address	Price	Bd & Bth	Living / Avg.	Land   Avg.	Lanai	Occ.	FL	DOM
<a href="#">1330 Ala Moana Boulevard 1008</a>	<a href="#">\$1,080,000</a>	2 & 2/0	1,385   \$780	135,472   \$8	150	65%	10	197

Address	Tax   Maint.   Ass.	Assessed Land	Assessed Building	Assessed Total	Ratio	Year & Remodeled
<a href="#">1330 Ala Moana Boulevard 1008</a>	\$216   \$2,021   \$0	\$108,000	\$873,800	\$981,800	110%	1990 & NA

[1330 Ala Moana Boulevard 1008](#) - MLS#: [202400029](#) - Largest 2 bedroom, 2 bathroom floor plan in building, 1385 SF plus 150 SF lanai, on cool East side to keep your energy bill low. Most desirable "Flex-Plan" layout. keep entire unit yourself, or use the separate front 1 bedroom, 1 bathroom for home office, or rent it as potential income, endless options. Nauru Tower is the luxury high rise in Kakaako, right across Ala Moana Beach and Mall. #1008 has a covered parking space, storage room, new paint, new W/D and Dishwasher, luxury kitchen with Sub-zero and granite. Resort style amenities, heated salt water pool, tennis, cabanas, BBQ, jogging paths, recreation deck, guest parking, e-charging, surf/bike racks, pickleball, 24 hour security. Unit can be delivered furnished or empty. Bring your toothbrush! **Region:** Metro **Neighborhood:** Kakaako **Condition:** Excellent **Parking:** Assigned, Covered - 1, Guest, Secured Entry **Total Parking:** 1 **View:** City, Ocean **Frontage:** **Pool:** **Zoning:** Kak - Kakaako Community Development Project **Sale Conditions:** None **Schools:** [Kaahumanu](#), [Stevenson](#), [Mckinley](#) \* [Request Showing](#), [Photos](#), [History](#), [Maps](#), [Deed](#), [Watch List](#), [Tax Info](#)

DOM = Days on Market, Occ. = Occupancy, FL = Floor Number