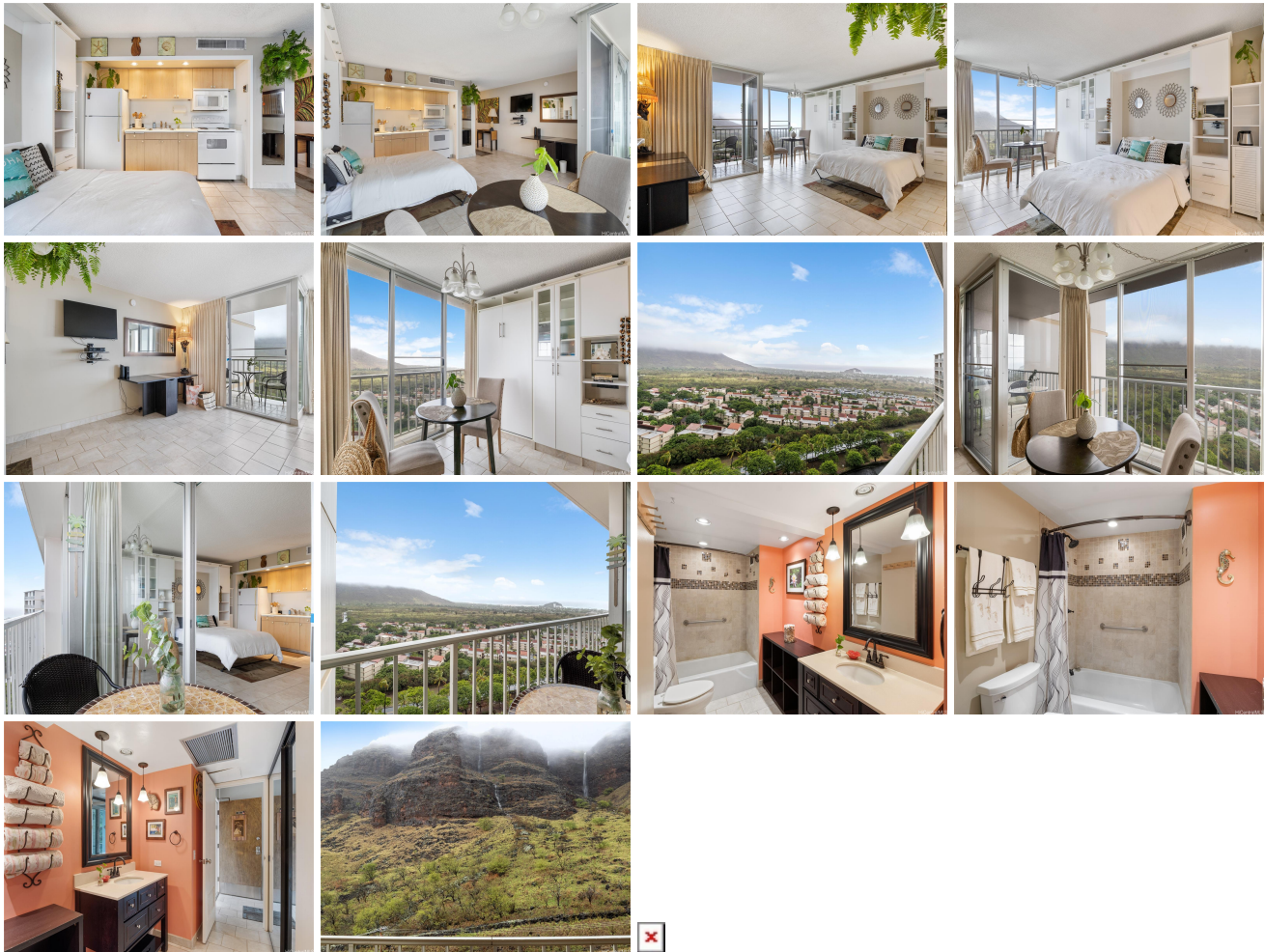


Makaha Valley Towers 84-710 Kili Drive Unit 1612, Waianae 96792 * \$208,000

Beds: 0	MLS#: 202400626, FS	Year Built: 1970
Bath: 1/0	Status: Active	Remodeled: 1990
Living Sq. Ft.: 515	List Date & DOM: 01-10-2024 & 189	Total Parking: 1
Land Sq. Ft.: 612,759	Condition: Above Average	Assessed Value
Lanai Sq. Ft.: 0	Frontage:	Building: \$140,900
Sq. Ft. Other: 0	Tax/Year: \$48/2024	Land: \$25,100
Total Sq. Ft. 515	Neighborhood: Makaha	Total: \$166,000
Maint./Assoc. \$843 / \$0	Flood Zone : Zone D - Tool	Stories / CPR: / No
Parking: Guest, Open - 1, Unassigned	Frontage:	
Zoning : 12 - A-2 Medium Density Apartme	View: Mountain, Ocean, Sunset	

Public Remarks: Nestled in Makaha Valley, this condo epitomizes the allure of Hawaiiana elegance. With a prime valley location, you'll experience resort-style living and the ultimate Hawaiian getaway. This modern studio boasts a thoughtfully designed layout, complete with a built-in wall unit that features soft ambient lighting and provides a haven of comfort with a Queen-sized pull-down bed and an additional cozy Twin-sized pull-down bed. As you step inside, you'll be greeted by the seamless tile flooring that runs from the entryway through to the lanai, creating an expansive and open atmosphere. The studio's beautifully redesigned bathroom in a sanctuary in itself, featuring custom cabinetry, a stunning quartz countertop, and an upgraded shower for a touch of luxury. This condo is being sold, fully furnished so you can embrace the Hawaiian lifestyle without a hitch. Paradise beckons you to this exquisite retreat, offering the perfect blend of sophistication and tropical charm, all just a stone's throw away from the world-famous Makaha Beach. Your dream Hawaiian escape awaits. **Sale Conditions:** None **Schools:** , , * [Request Showing](#), [Photos](#), [History](#), [Maps](#), [Deed](#), [Watch List](#), [Tax Info](#)



Address	Price	Bd & Bth	Living / Avg.	Land Avg.	DOM
84-710 Kili Drive 1612	\$208,000	0 & 1/0	515 \$404	612,759 \$0	189

Address	Tax Maint. Ass.	Assessed Land	Assessed Building	Assessed Total	Ratio	Year & Remodeled
84-710 Kili Drive 1612	\$48 \$843 \$0	\$25,100	\$140,900	\$166,000	125%	1970 & 1990

[84-710 Kili Drive 1612](#) - MLS#: [202400626](#) - Nestled in Makaha Valley, this condo epitomizes the allure of Hawaiiana elegance. With a prime valley location, you'll experience resort-style living and the ultimate Hawaiian getaway. This modern studio boasts a thoughtfully designed layout, complete with a built-in wall unit that features soft ambient lighting and provides a haven of comfort with a Queen-sized pull-down bed and an additional cozy Twin-sized pull-down bed. As you step inside, you'll be greeted by the seamless tile flooring that runs from the entryway through to the lanai, creating an expansive and open atmosphere. The studio's beautifully redesigned bathroom is a sanctuary in itself, featuring custom cabinetry, a stunning quartz countertop, and an upgraded shower for a touch of luxury. This condo is being sold, fully furnished so you can embrace the Hawaiian lifestyle without a hitch. Paradise beckons you to this exquisite retreat, offering the perfect blend of sophistication and tropical charm, all just a stone's throw away from the world-famous Makaha Beach. Your dream Hawaiian escape awaits. **Region:** Leeward **Neighborhood:** Makaha **Condition:** Above Average **Parking:** Guest, Open - 1, Unassigned **Total Parking:** 1 **View:** Mountain, Ocean, Sunset **Frontage:** **Pool:** **Zoning:** 12 - A-2 Medium Density Apartme **Sale Conditions:** None **Schools:** , , * [Request Showing](#), [Photos](#), [History](#), [Maps](#), [Deed](#), [Watch List](#), [Tax Info](#)

DOM = Days on Market