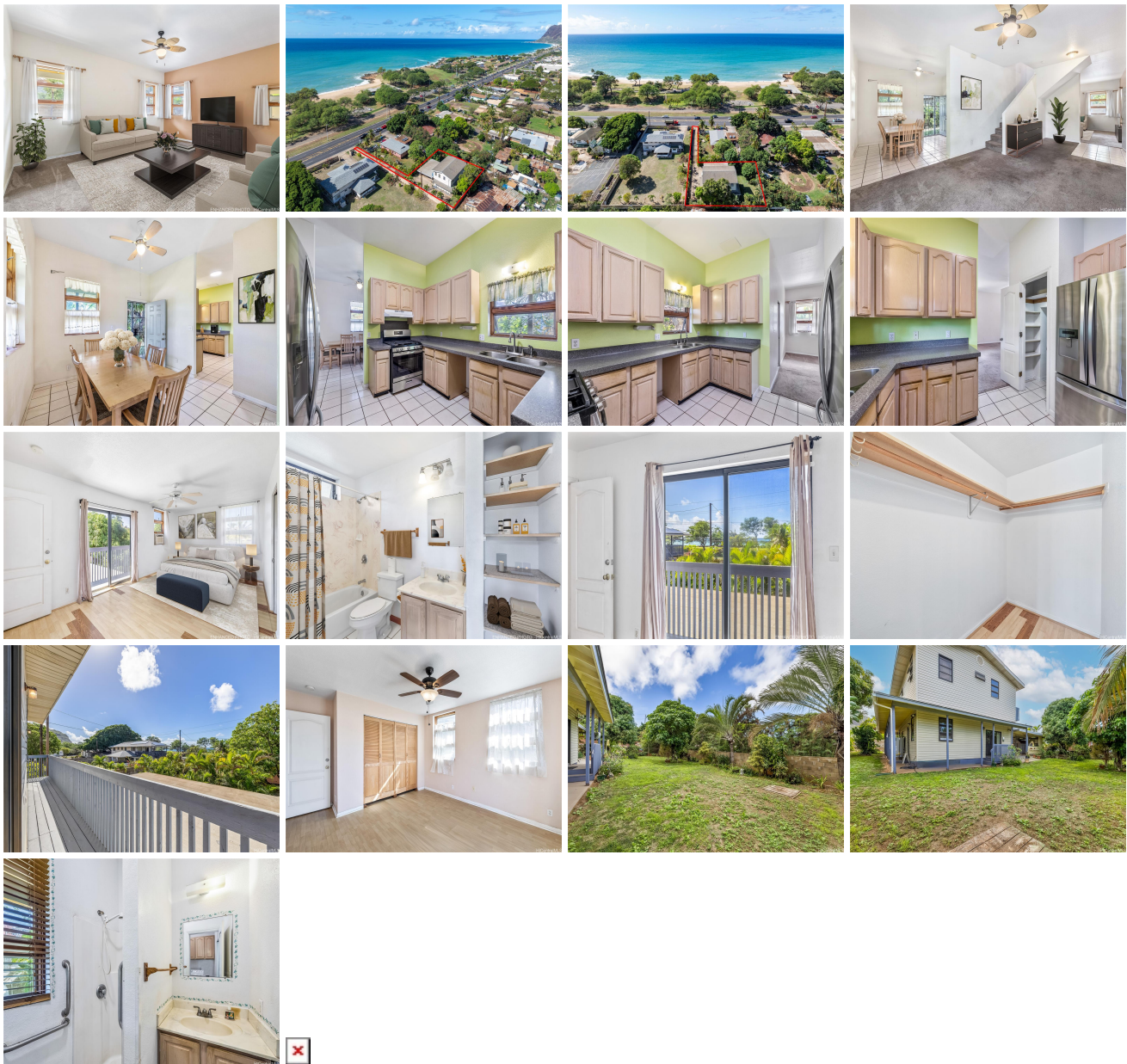


**89-298A Farrington Highway, Waianae 96792 \* \* \$650,000**

Beds: <b>4</b>	MLS#: <b>202400681, LH</b>	Year Built: <b>1995</b>
Bath: <b>3/0</b>	Status: <b>Active</b>	Remodeled:
Living Sq. Ft.: <b>2,155</b>	List Date & DOM: <b>01-16-2024 &amp; 164</b>	Total Parking: <b>8</b>
Land Sq. Ft.: <b>10,280</b>	Condition: <b>Above Average</b>	<a href="#">Assessed Value</a>
Lanai Sq. Ft.: <b>121</b>	Frontage:	Building: <b>\$200,000</b>
Sq. Ft. Other: <b>0</b>	Tax/Year: <b>\$25/2023</b>	Land: <b>\$505,300</b>
Total Sq. Ft. <b>2,276</b>	Neighborhood: <b>Nanakuli</b>	Total: <b>\$705,300</b>
Maint./Assoc. <b>\$0 / \$0</b>	<a href="#">Flood Zone</a> : <b>Zone X - Tool</b>	Stories / CPR: <b>Two / No</b>
Parking: <b>3 Car+, Carport, Driveway</b>	Frontage:	
<a href="#">Zoning</a> : <b>05 - R-5 Residential District</b>	View: <b>Mountain, Ocean</b>	

**Public Remarks:** Large Hawaiian Homelands property! 4 bedrooms, 3 bathrooms, newer built in 1995 with over 2,155 living square footage! Large 10,280 square foot lot with Kukui Nut tree, Mango tree, Areca Palms, and Tiare plants on this beautiful lot. With ocean views from your primary bedroom and 2nd bedroom! This home is the one you've been waiting for! Don't miss out, call for an appointment today! **Sale Conditions:** None **Schools:** , , \* [Request Showing](#), [Photos](#), [History](#), [Maps](#), [Deed](#), [Watch List](#), [Tax Info](#)



Address	Price	Bd & Bth	Living / Avg.	Land   Avg.	Lanai	Occ.	FL	DOM
<a href="#">89-298A Farrington Highway</a>	<b>\$650,000 LH</b>	4 & 3/0	2,155   \$302	10,280   \$63	121	0%	0	164

Address	Tax   Maint.   Ass.	Assessed Land	Assessed Building	Assessed Total	Ratio	Year & Remodeled
<a href="#">89-298A Farrington Highway</a>	\$25   \$0   \$0	\$505,300	\$200,000	\$705,300	92%	1995 & NA

[89-298A Farrington Highway](#) - MLS#: [202400681](#) - Large Hawaiian Homelands property! 4 bedrooms, 3 bathrooms, newer built in 1995 with over 2,155 living square footage! Large 10,280 square foot lot with Kukui Nut tree, Mango tree, Areca Palms, and Tiare plants on this beautiful lot. With ocean views from your primary bedroom and 2nd bedroom! This home is the one you've been waiting for! Don't miss out, call for an appointment today! **Region:** Leeward **Neighborhood:** Nanakuli **Condition:** Above Average **Parking:** 3 Car+, Carport, Driveway **Total Parking:** 8 **View:** Mountain, Ocean **Frontage:** **Pool:** None **Zoning:** 05 - R-5 Residential District **Sale Conditions:** None **Schools:** , , \* [Request Showing](#), [Photos](#), [History](#), [Maps](#), [Deed](#), [Watch List](#), [Tax Info](#)

DOM = Days on Market, Occ. = Occupancy, FL = Floor Number