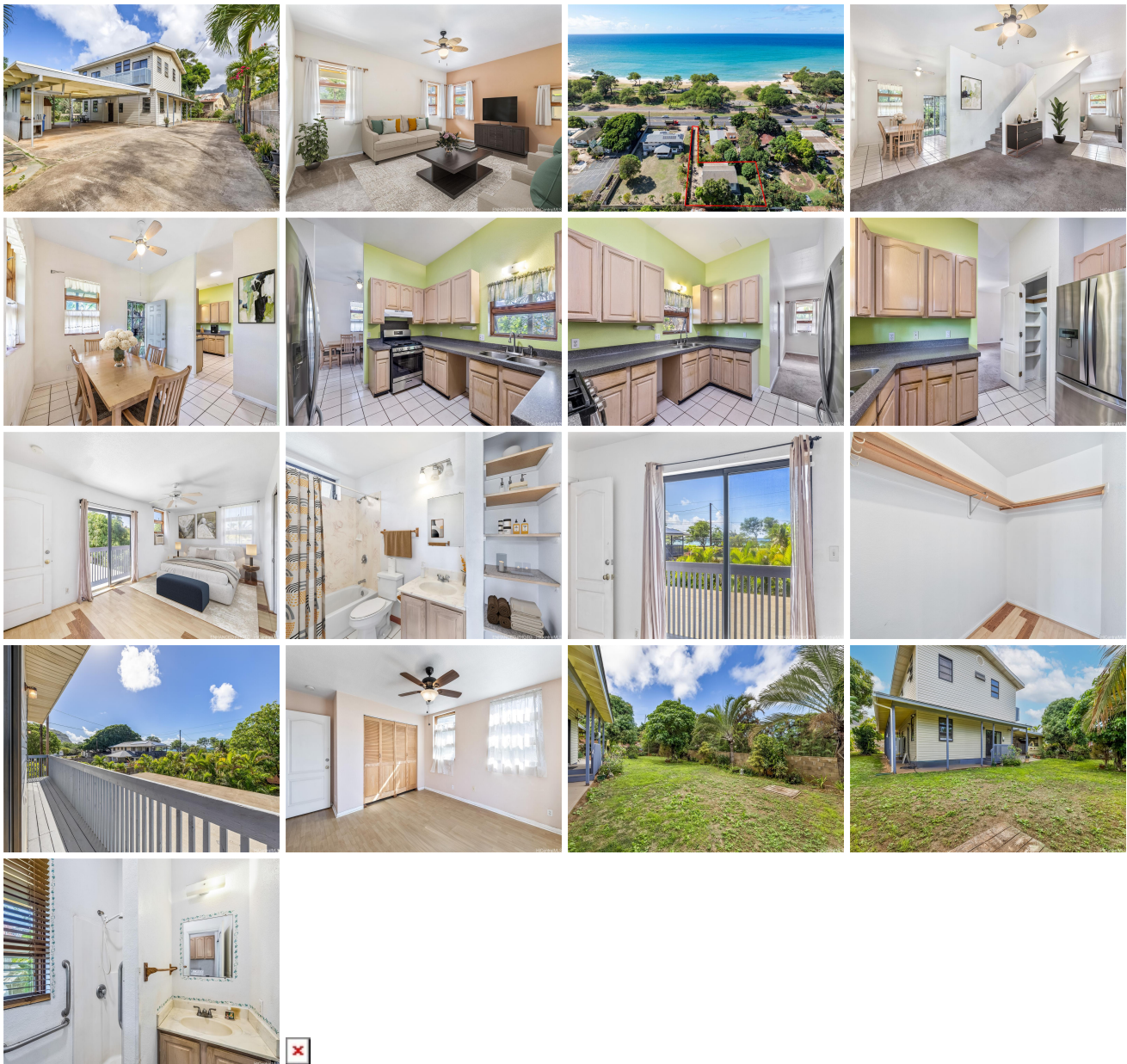


89-298A Farrington Highway, Waianae 96792 * \$649,000 * Originally \$650,000

Beds: 4	MLS#: 202400681, LH	Year Built: 1995
Bath: 3/0	Status: Active	Remodeled:
Living Sq. Ft.: 2,155	List Date & DOM: 01-16-2024 & 183	Total Parking: 8
Land Sq. Ft.: 10,280	Condition: Above Average	Assessed Value
Lanai Sq. Ft.: 121	Frontage:	Building: \$200,000
Sq. Ft. Other: 0	Tax/Year: \$25/2023	Land: \$505,300
Total Sq. Ft. 2,276	Neighborhood: Nanakuli	Total: \$705,300
Maint./Assoc. \$0 / \$0	Flood Zone : Zone X - Tool	Stories / CPR: Two / No
Parking: 3 Car+, Carport, Driveway	Frontage:	
Zoning : 05 - R-5 Residential District	View: Mountain, Ocean	

Public Remarks: Large Hawaiian Homelands property! 4 bedrooms, 3 bathrooms, newer built in 1995 with over 2,155 living square footage! Large 10,280 square foot lot with Kukui Nut tree, Mango tree, Areca Palms, and Tiare plants on this beautiful lot. With ocean views from your primary bedroom and 2nd bedroom! This home is the one you've been waiting for! Don't miss out, call for an appointment today! **Sale Conditions:** None **Schools:** , , * [Request Showing](#), [Photos](#), [History](#), [Maps](#), [Deed](#), [Watch List](#), [Tax Info](#)



Address	Price	Bd & Bth	Living / Avg.	Land Avg.	DOM
89-298A Farrington Highway	\$649,000 LH	4 & 3/0	2,155 \$301	10,280 \$63	183

Address	Tax Maint. Ass.	Assessed Land	Assessed Building	Assessed Total	Ratio	Year & Remodeled
89-298A Farrington Highway	\$25 \$0 \$0	\$505,300	\$200,000	\$705,300	92%	1995 & NA

[89-298A Farrington Highway](#) - MLS#: [202400681](#) - Original price was \$650,000 - Large Hawaiian Homelands property! 4 bedrooms, 3 bathrooms, newer built in 1995 with over 2,155 living square footage! Large 10,280 square foot lot with Kukui Nut tree, Mango tree, Areca Palms, and Tiare plants on this beautiful lot. With ocean views from your primary bedroom and 2nd bedroom! This home is the one you've been waiting for! Don't miss out, call for an appointment today! **Region:** Leeward **Neighborhood:** Nanakuli **Condition:** Above Average **Parking:** 3 Car+, Carport, Driveway **Total Parking:** 8 **View:** Mountain, Ocean **Frontage:** **Pool:** None **Zoning:** 05 - R-5 Residential District **Sale Conditions:** None **Schools:** , , * [Request Showing](#), [Photos](#), [History](#), [Maps](#), [Deed](#), [Watch List](#), [Tax Info](#)

DOM = Days on Market