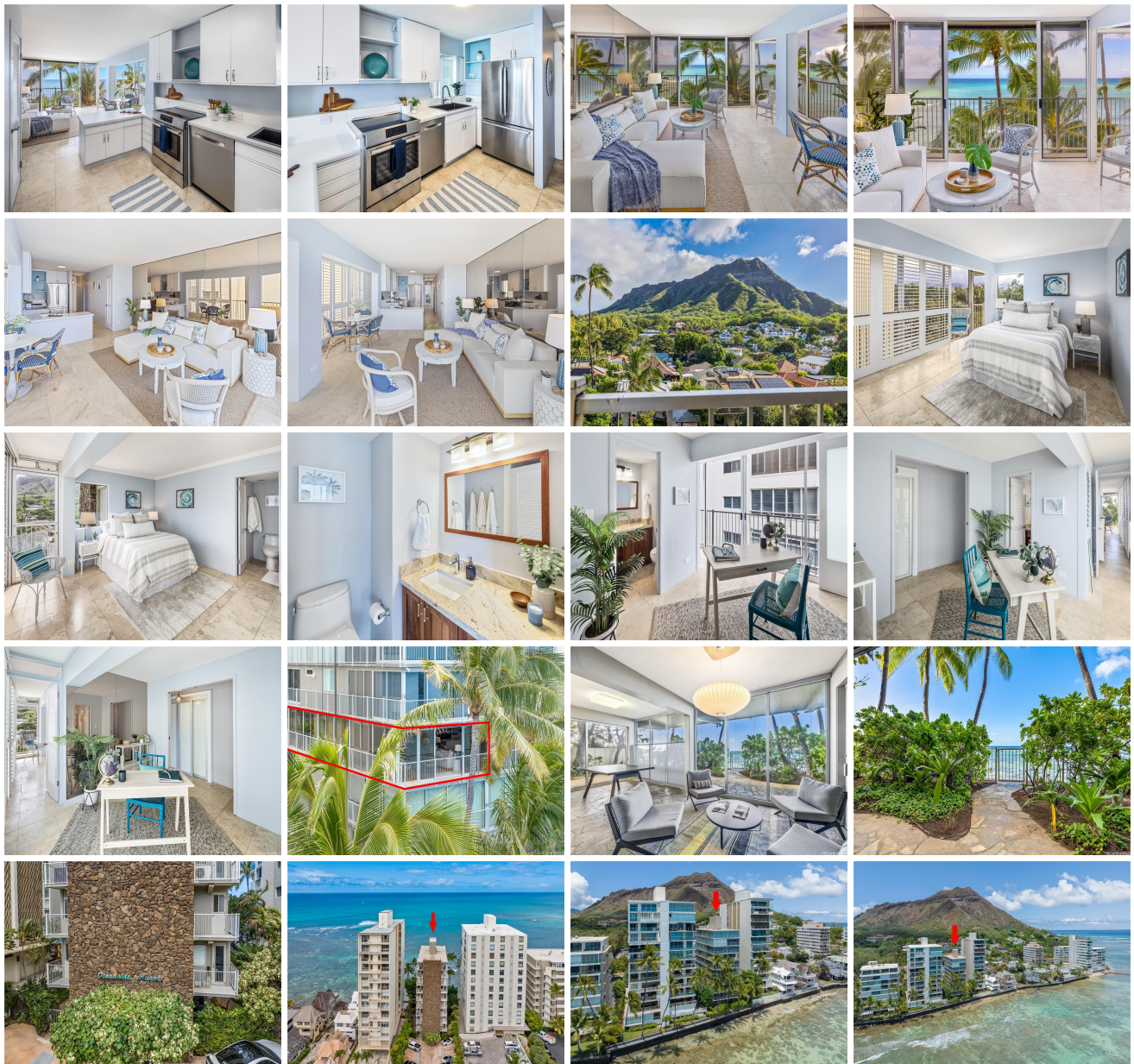


Oceanside Manor 3015 Kalakaua Avenue Unit 602, Honolulu 96815 * Oceanside Manor *

\$1,999,000 * Originally \$2,250,000

Beds: 2	MLS#: 20240881, FS	Year Built: 1963
Bath: 1/1	Status: Active	Remodeled:
Living Sq. Ft.: 1,082	List Date & DOM: 01-18-2024 & 164	Total Parking: 1
Land Sq. Ft.: 9,544	Condition: Above Average	Assessed Value
Lanai Sq. Ft.: 0	Frontage: Ocean, Waterfront	Building: \$2,022,200
Sq. Ft. Other: 0	Tax/Year: \$620/2024	Land: \$265,100
Total Sq. Ft. 1,082	Neighborhood: Diamond Head	Total: \$2,287,300
Maint./Assoc. \$1,103 / \$0	Flood Zone : Zone AE - Tool	Stories / CPR: 8-14 / No
Parking: Assigned, Open - 1	Frontage: Ocean, Waterfront	
Zoning : 12 - A-2 Medium Density Apartme	View: Coastline, Diamond Head, Mountain, Ocean, Sunrise, Sunset	

Public Remarks: FRESH NEW LOOK - FABULOUS NEW PRICE!!!!!!E KOMO MAI. Direct oceanfront 2 bedroom, 1 1/2 bath apartment in Oceanside Manor, a CONDOMINIUM. Unit runs from the ocean to the Diamond Head/Park area with breathtaking views from both directions, including Tonggs Surf Spot. Secured entry with 1 assigned parking stall and surfboard storage available. Only 2 units per floor and an oceanfront Club Room for residents. Oceanfront access via locked gate. **Sale Conditions:** None **Schools:** [Waikiki](#), [Washington](#), [Kaimuki](#) * [Request Showing](#), [Photos](#), [History](#), [Maps](#), [Deed](#), [Watch List](#), [Tax Info](#)





Address	Price	Bd & Bth	Living / Avg.	Land Avg.	Lanai	Occ.	FL	DOM
3015 Kalakaua Avenue 602	\$1,999,000	2 & 1/1	1,082 \$1,848	9,544 \$209	0	39%	6	164

Address	Tax Maint. Ass.	Assessed Land	Assessed Building	Assessed Total	Ratio	Year & Remodeled
3015 Kalakaua Avenue 602	\$620 \$1,103 \$0	\$265,100	\$2,022,200	\$2,287,300	87%	1963 & NA

[3015 Kalakaua Avenue 602](#) - MLS#: [202400881](#) - Original price was \$2,250,000 - FRESH NEW LOOK - FABULOUS NEW PRICE!!!!!!E KOMO MAI. Direct oceanfront 2 bedroom, 1 1/2 bath apartment in Oceanside Manor, a CONDOMINIUM. Unit runs from the ocean to the Diamond Head/Park area with breathtaking views from both directions, including Tonggs Surf Spot. Secured entry with 1 assigned parking stall and surfboard storage available. Only 2 units per floor and an oceanfront Club Room for residents. Oceanfront access via locked gate. **Region:** Diamond Head **Neighborhood:** Diamond Head **Condition:** Above Average **Parking:** Assigned, Open - 1 **Total Parking:** 1 **View:** Coastline, Diamond Head, Mountain, Ocean, Sunrise, Sunset **Frontage:** Ocean,Waterfront **Pool:** **Zoning:** 12 - A-2 Medium Density Apartme **Sale Conditions:** None **Schools:** [Waikiki](#), [Washington](#), [Kaimuki](#) * [Request Showing](#), [Photos](#), [History](#), [Maps](#), [Deed](#), [Watch List](#), [Tax Info](#)

DOM = Days on Market, Occ. = Occupancy, FL = Floor Number