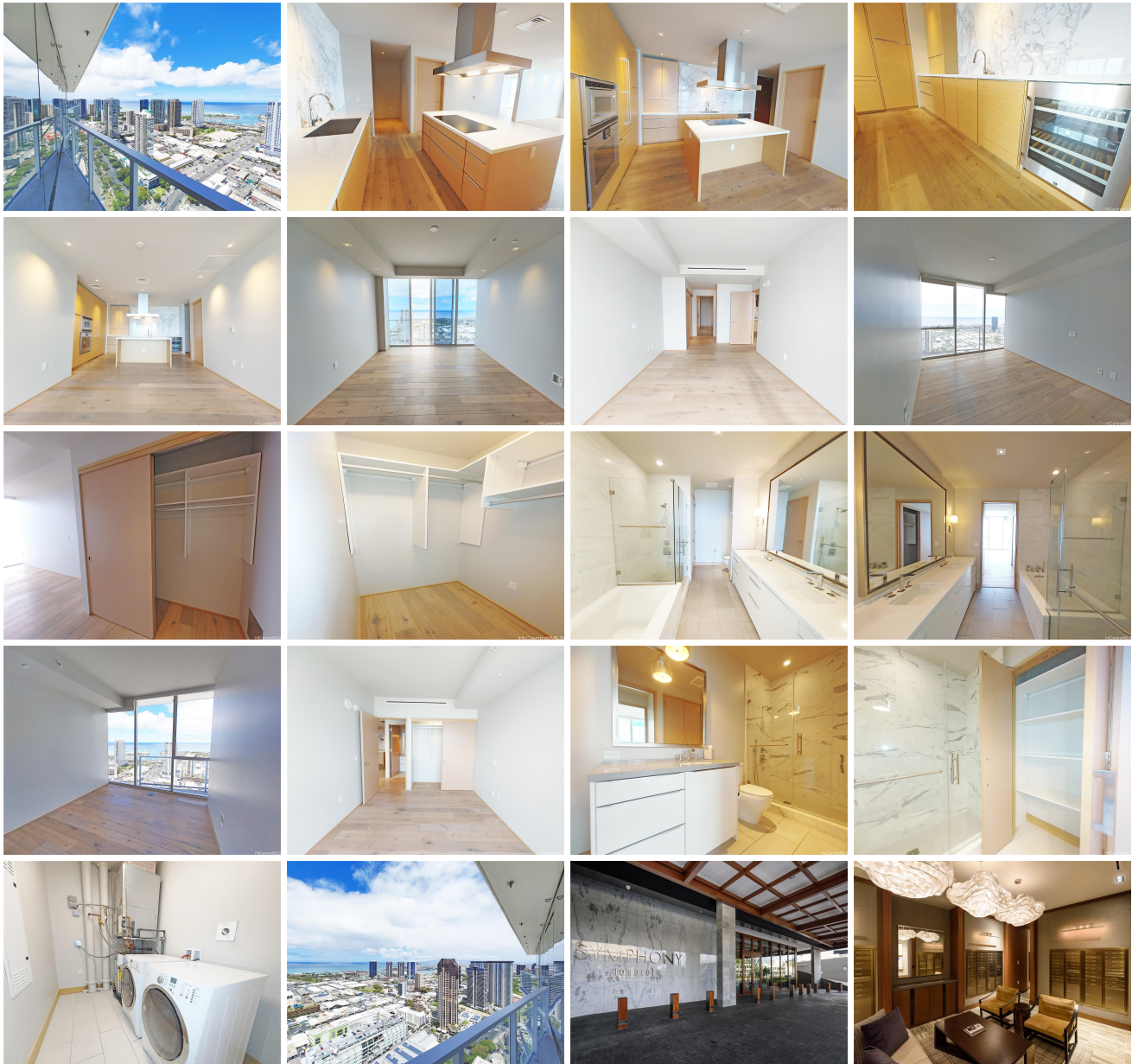


Symphony Honolulu 888 Kapiolani Boulevard Unit 4505, Honolulu 96813 * Symphony

Honolulu * \$1,800,000

Beds: 2	MLS#: 202401276, FS	Year Built: 2016
Bath: 2/0	Status: Active	Remodeled:
Living Sq. Ft.: 1,278	List Date & DOM: 01-22-2024 & 177	Total Parking: 2
Land Sq. Ft.: 0	Condition: Excellent	Assessed Value
Lanai Sq. Ft.: 50	Frontage: Ocean	Building: \$1,414,800
Sq. Ft. Other: 0	Tax/Year: \$804/2023	Land: \$81,100
Total Sq. Ft. 1,328	Neighborhood: Kakaako	Total: \$1,495,900
Maint./Assoc. \$1,100 / \$0	Flood Zone : Zone X - Tool	Stories / CPR: 21+ / No
Parking: Assigned, Covered - 2, Guest, Secured Entry	Frontage: Ocean	
Zoning : Kak - Kakaako Community Development Project	View: City, Mountain, Ocean, Sunset	

Public Remarks: Enjoy the simple elegance, convenience, and comfort of Symphony Honolulu. This desirable top floor penthouse unit features two bedrooms, two baths and two parking stalls. The expansive floor-to-ceiling glass windows in the living room frame the majestic ocean views and evening sunsets. The high-end kitchen appliances and cabinetry provide a luxurious cooking experience. Symphony Honolulu provides residents with exclusive amenities that include a pool and spa, kiddie pool, barbecue cabanas, gym, private dining room and more! **Sale Conditions:** None **Schools:** , , * [Request Showing, Photos, History, Maps, Deed, Watch List, Tax Info](#)





Address	Price	Bd & Bth	Living / Avg.	Land Avg.	Lanai	Occ.	FL	DOM
888 Kapiolani Boulevard 4505	\$1,800,000	2 & 2/0	1,278 \$1,408	0 \$inf	50	63%	45	177

Address	Tax Maint. Ass.	Assessed Land	Assessed Building	Assessed Total	Ratio	Year & Remodeled
888 Kapiolani Boulevard 4505	\$804 \$1,100 \$0	\$81,100	\$1,414,800	\$1,495,900	120%	2016 & NA

[888 Kapiolani Boulevard 4505](#) - MLS#: [202401276](#) - Enjoy the simple elegance, convenience, and comfort of Symphony Honolulu. This desirable top floor penthouse unit features two bedrooms, two baths and two parking stalls. The expansive floor-to-ceiling glass windows in the living room frame the majestic ocean views and evening sunsets. The high-end kitchen appliances and cabinetry provide a luxurious cooking experience. Symphony Honolulu provides residents with exclusive amenities that include a pool and spa, kiddie pool, barbecue cabanas, gym, private dining room and more! **Region:** Metro **Neighborhood:** Kakaako **Condition:** Excellent **Parking:** Assigned, Covered - 2, Guest, Secured Entry **Total Parking:** 2 **View:** City, Mountain, Ocean, Sunset **Frontage:** Ocean **Pool:** **Zoning:** Kak - Kakaako Community Development Project **Sale Conditions:** None **Schools:** , , * [Request Showing](#), [Photos](#), [History](#), [Maps](#), [Deed](#), [Watch List](#), [Tax Info](#)

DOM = Days on Market, Occ. = Occupancy, FL = Floor Number