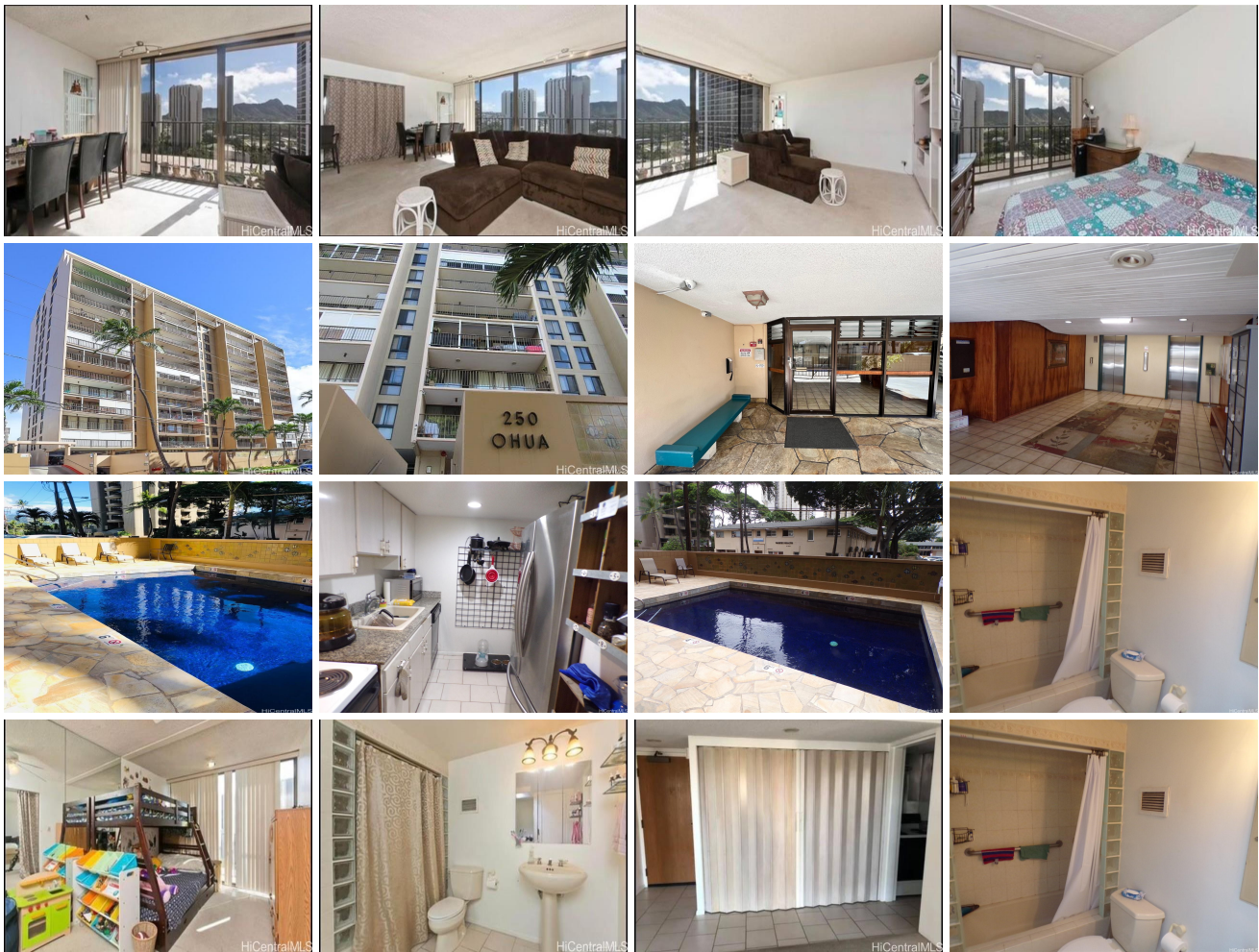


**250 Ohua 250 Ohua Avenue Unit PHI, Honolulu 96815 \* 250 Ohua \* \$620,000 \* Originally \$650,000**

Beds: <b>1</b>	MLS#: <b>202401676, FS</b>	Year Built: <b>1971</b>
Bath: <b>1/0</b>	Status: <b>Active</b>	Remodeled:
Living Sq. Ft.: <b>1,017</b>	List Date & DOM: <b>01-26-2024 &amp; 156</b>	Total Parking: <b>2</b>
Land Sq. Ft.: <b>22,433</b>	Condition: <b>Above Average</b>	<a href="#">Assessed Value</a>
Lanai Sq. Ft.: <b>56</b>	Frontage:	Building: <b>\$569,400</b>
Sq. Ft. Other: <b>0</b>	Tax/Year: <b>\$191/2023</b>	Land: <b>\$86,800</b>
Total Sq. Ft. <b>1,073</b>	Neighborhood: <b>Waikiki</b>	Total: <b>\$656,200</b>
Maint./Assoc. <b>\$983 / \$0</b>	<a href="#">Flood Zone</a> : <b>Zone AE - Tool</b>	Stories / CPR: <b>8-14 / No</b>
Parking: <b>Assigned, Covered - 2</b>	Frontage:	
<a href="#">Zoning</a> : <b>X2 - Apartment Precinct</b>	View: <b>Diamond Head, Golf Course, Marina/Canal, Mountain</b>	

**Public Remarks:** Imagine living one block from Waikiki Beach. This Uber spacious one bedroom with bonus room offers 1,017 sq ft of resort-like living. Diamond Head views from both rooms and 2 covered parking plus an enclosed lanai. Hard to find a VA approved condo in Waikiki with 2 covered and gated parking stalls. Enjoy world-class shopping, dining and surfing just a few minutes away. Your maintenance fee includes Central A/C, electric, sewer and water. Easy freeway and University of Hawaii and Chaminade U. access via Kapahulu Av. Freshwater pool. There is a second "office" room which could be second bedroom. Pets allowed/pet on property. **Sale Conditions:** None **Schools:** , , \* [Request Showing](#), [Photos](#), [History](#), [Maps](#), [Deed](#), [Watch List](#), [Tax Info](#)



Address	Price	Bd & Bth	Living / Avg.	Land   Avg.	Lanai	Occ.	FL	DOM
<a href="#">250 Ohua Avenue PHI</a>	<b>\$620,000</b>	1 & 1/0	1,017   \$610	22,433   \$28	56	56%	14	156

Address	Tax   Maint.   Ass.	Assessed Land	Assessed Building	Assessed Total	Ratio	Year & Remodeled
<a href="#">250 Ohua Avenue PHI</a>	\$191   \$983   \$0	\$86,800	\$569,400	\$656,200	94%	1971 & NA

[250 Ohua Avenue PH1](#) - MLS#: [202401676](#) - Original price was \$650,000 - Imagine living one block from Waikiki Beach. This Uber spacious one bedroom with bonus room offers 1,017 sq ft of resort-like living. Diamond Head views from both rooms and 2 covered parking plus an enclosed lanai. Hard to find a VA approved condo in Waikiki with 2 covered and gated parking stalls. Enjoy world-class shopping, dining and surfing just a few minutes away. Your maintenance fee includes Central A/C, electric, sewer and water. Easy freeway and University of Hawaii and Chaminade U. access via Kapahulu Av. Freshwater pool. There is a second "office" room which could be second bedroom. Pets allowed/pet on property. **Region:** Metro  
**Neighborhood:** Waikiki **Condition:** Above Average **Parking:** Assigned, Covered - 2 **Total Parking:** 2 **View:** Diamond Head, Golf Course, Marina/Canal, Mountain **Frontage:** **Pool:** **Zoning:** X2 - Apartment Precinct **Sale Conditions:** None  
**Schools:** , , \* [Request Showing](#), [Photos](#), [History](#), [Maps](#), [Deed](#), [Watch List](#), [Tax Info](#)

DOM = Days on Market, Occ. = Occupancy, FL = Floor Number