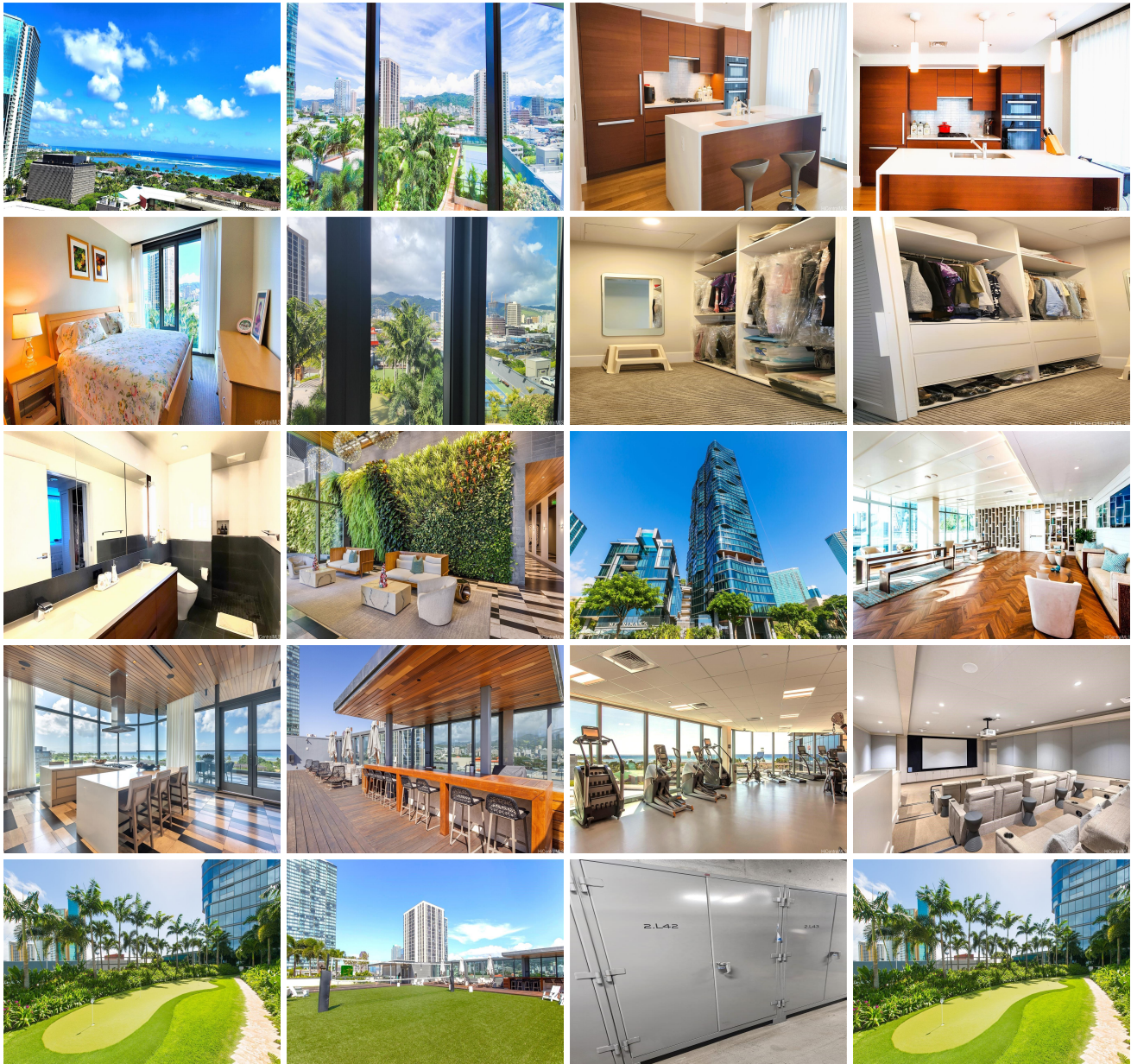


Anaha - 1108 Auahi 1108 Auahi Street Unit 1008, Honolulu 96814 * Anaha - 1108 Auahi *

\$1,149,000 * Originally \$1,225,000

Beds: 1	MLS#: 202401677, FS	Year Built: 2017
Bath: 1/0	Status: Active	Remodeled:
Living Sq. Ft.: 927	List Date & DOM: 02-05-2024 & 163	Total Parking: 1
Land Sq. Ft.: 89,882	Condition: Excellent	Assessed Value
Lanai Sq. Ft.: 0	Frontage:	Building: \$1,162,500
Sq. Ft. Other: 0	Tax/Year: \$294/2023	Land: \$45,900
Total Sq. Ft. 927	Neighborhood: Kakaako	Total: \$1,208,400
Maint./Assoc. \$1,442 / \$0	Flood Zone : Zone AE - Tool	Stories / CPR: 8-14 / No
Parking: Assigned, Covered - 1	Frontage:	
Zoning : Kak - Kakaako Community Development Project	View: Garden, Mountain, Ocean	

Public Remarks: MOTIVATED SELLER & PRICED FOR ACTION! Great investment opportunity for a primary residence or vacation home in Honolulu's luxury condominium "Anaha" located in the heart of Ward Village. This spacious 1-bedroom (927 SF) unit offers unobstructed ocean and mountain views, perfect for those seeking an urban lifestyle. The open-concept living area features high-end finishes, gleaming hardwood floors, custom cabinetry, and motorized drapes. The kitchen is equipped with top-of-the-line Miele appliances, including a wine cooler. This unit comes with a PREMIUM parking, near main entrance on first level, and two storage lockers. The 7th floor of the building boasts resort-like amenities. On a per square basis, this unit offers the best value in the building for its price. MAKE AN OFFER TODAY Please contact the listing agent for your private showing. Minimum 24-hour notice required. Next Private Showing will be held on Sunday, July 14th between 1pm - 3pm **Sale Conditions:** None **Schools:** [Kaahumanu](#), [Keelikolani](#), [Mckinley](#) * [Request Showing](#), [Photos](#), [History](#), [Maps](#), [Deed](#), [Watch List](#), [Tax Info](#)



Address	Price	Bd & Bth	Living / Avg.	Land Avg.	Lanai	Occ.	FL	DOM
1108 Auahi Street 1008	\$1,149,000	1 & 1/0	927 \$1,239	89,882 \$13	0	69%	10	163

Address	Tax Maint. Ass.	Assessed Land	Assessed Building	Assessed Total	Ratio	Year & Remodeled
1108 Auahi Street 1008	\$294 \$1,442 \$0	\$45,900	\$1,162,500	\$1,208,400	95%	2017 & NA

[1108 Auahi Street 1008](#) - MLS#: [202401677](#) - Original price was \$1,225,000 - MOTIVATED SELLER & PRICED FOR ACTION! Great investment opportunity for a primary residence or vacation home in Honolulu's luxury condominium "Anaha" located in the heart of Ward Village. This spacious 1-bedroom (927 SF) unit offers unobstructed ocean and mountain views, perfect for those seeking an urban lifestyle. The open-concept living area features high-end finishes, gleaming hardwood floors, custom cabinetry, and motorized drapes. The kitchen is equipped with top-of-the-line Miele appliances, including a wine cooler. This unit comes with a PREMIUM parking, near main entrance on first level, and two storage lockers. The 7th floor of the building boasts resort-like amenities. On a per square basis, this unit offers the best value in the building for its price. MAKE AN OFFER TODAY Please contact the listing agent for your private showing. Minimum 24-hour notice required. Next Private Showing will be held on Sunday, July 14th between 1pm - 3pm **Region:** Metro **Neighborhood:** Kakaako **Condition:** Excellent **Parking:** Assigned, Covered - 1 **Total Parking:** 1 **View:** Garden, Mountain, Ocean **Frontage:** **Pool:** **Zoning:** Kak - Kakaako Community Development Project **Sale Conditions:** None **Schools:** [Kaahumanu](#), [Keelikolani](#), [Mckinley](#) * [Request Showing](#), [Photos](#), [History](#), [Maps](#), [Deed](#), [Watch List](#), [Tax Info](#)

DOM = Days on Market, Occ. = Occupancy, FL = Floor Number