

Wilder At Piikoi 1201 Wilder Avenue Unit PH2, Honolulu 96822 * Wilder At Piikoi *

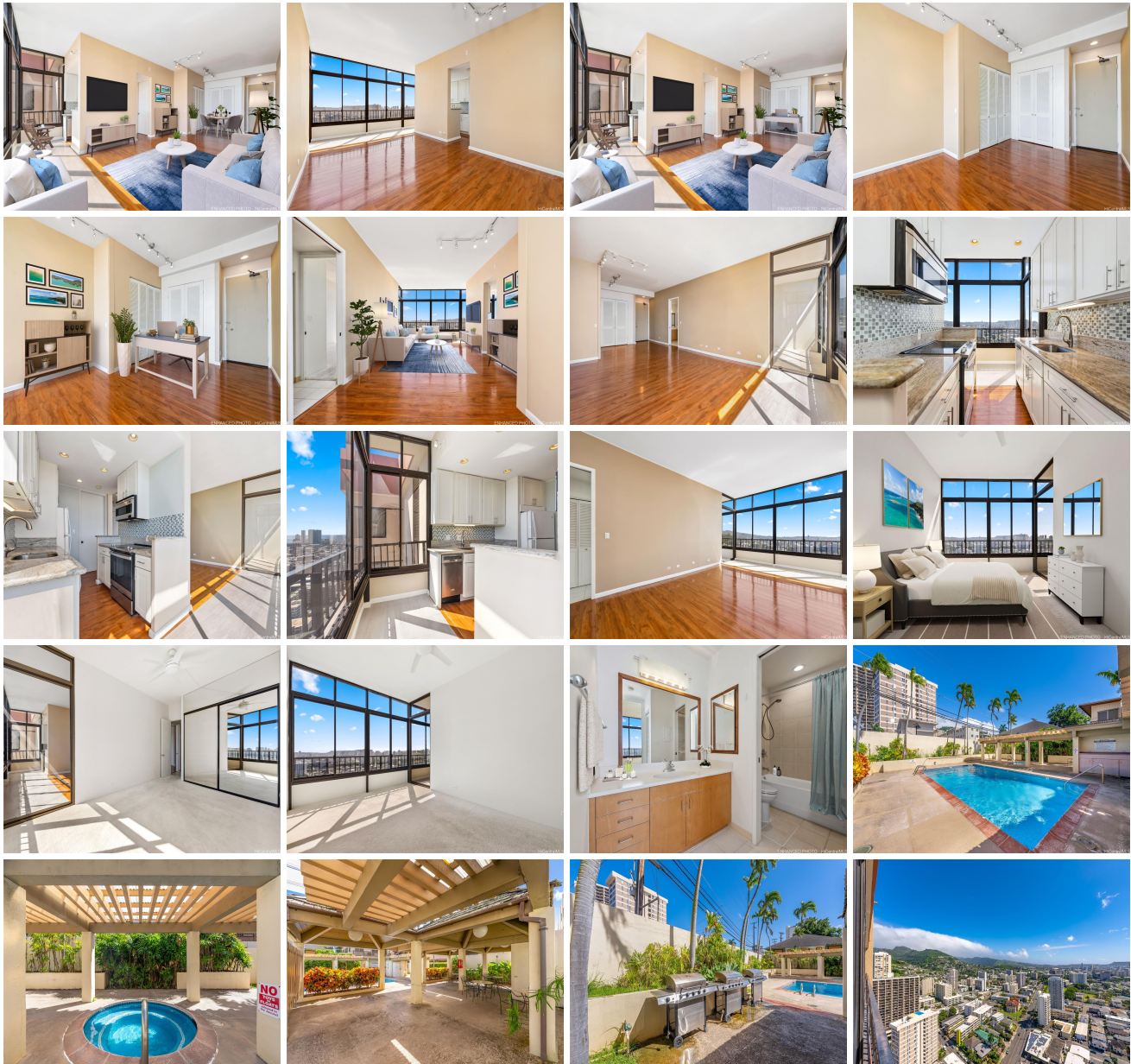
\$475,000 * Originally \$528,900

Beds: 1	MLS#: 202401772, FS	Year Built: 1979
Bath: 1/0	Status: Active	Remodeled: 2023
Living Sq. Ft.: 811	List Date & DOM: 02-08-2024 & 160	Total Parking: 1
Land Sq. Ft.: 31,625	Condition: Excellent	Assessed Value
Lanai Sq. Ft.: 0	Frontage:	Building: \$424,600
Sq. Ft. Other: 0	Tax/Year: \$135/2023	Land: \$38,200
Total Sq. Ft. 811	Neighborhood: Makiki Area	Total: \$462,800
Maint./Assoc. \$811 / \$0	Flood Zone : Zone X - Tool	Stories / CPR: 21+ / No
Parking: Assigned, Covered - 1, Garage, Guest, Secured Entry	Frontage:	

Zoning: 12 - A-2 Medium Density Apartme

View: City, Coastline, Diamond Head, Mountain, Ocean, Sunset

Public Remarks: Price Improvement! You will just adore a penthouse view! Call your Realtor! Look no further for your first home, new home, or investment property. Wall-to-wall windows to full 10' ceiling height bathe the open interior in natural light. This top floor perch rises above the city for a panorama of Honolulu that will surely inspire, with vast twinkling night lights to set you into a restful state. It has been nicely remodeled, including in recent weeks with flooring and other upgrades. Its former 233sf lanai was enclosed to expand the interior living and dining areas, while still affording a sense of connection to the world around you. Wilder at Pi'ikoi community is so conveniently located above H-1 expressway in a neighborhood with nearby goods and services, cafes and eateries; it boasts a Walk Score of 86, Transit 69, Biking 56. See it today! Insurance Summary was reviewed to assure financing options; check with your lender. **Sale Conditions:** None **Schools:** [Kaaumanu](#), [Stevenson](#), [Roosevelt](#) * [Request Showing](#), [Photos](#), [History](#), [Maps](#), [Deed](#), [Watch List](#), [Tax Info](#)





Address	Price	Bd & Bth	Living / Avg.	Land Avg.	Lanai	Occ.	FL	DOM
1201 Wilder Avenue PH2	\$475,000	1 & 1/0	811 \$586	31,625 \$15	0	63%	30	160

Address	Tax Maint. Ass.	Assessed Land	Assessed Building	Assessed Total	Ratio	Year & Remodeled
1201 Wilder Avenue PH2	\$135 \$811 \$0	\$38,200	\$424,600	\$462,800	103%	1979 & 2023

[1201 Wilder Avenue PH2](#) - MLS#: [202401772](#) - Original price was \$528,900 - Price Improvement! You will just adore a penthouse view! Call your Realtor! Look no further for your first home, new home, or investment property. Wall-to-wall windows to full 10' ceiling height bathe the open interior in natural light. This top floor perch rises above the city for a panorama of Honolulu that will surely inspire, with vast twinkling night lights to set you into a restful state. It has been nicely remodeled, including in recent weeks with flooring and other upgrades. Its former 233sf lanai was enclosed to expand the interior living and dining areas, while still affording a sense of connection to the world around you. Wilder at Pi'ikoi community is so conveniently located above H-1 expressway in a neighborhood with nearby goods and services, cafes and eateries; it boasts a Walk Score of 86, Transit 69, Biking 56. See it today! Insurance Summary was reviewed to assure financing options; check with your lender. **Region:** Metro **Neighborhood:** Makiki Area **Condition:** Excellent **Parking:** Assigned, Covered - 1, Garage, Guest, Secured Entry **Total Parking:** 1 **View:** City, Coastline, Diamond Head, Mountain, Ocean, Sunset **Frontage:** Pool: **Zoning:** 12 - A-2 Medium Density Apartme **Sale Conditions:** None **Schools:** [Kaahumanu](#), [Stevenson](#), [Roosevelt](#) * [Request Showing](#), [Photos](#), [History](#), [Maps](#), [Deed](#), [Watch List](#), [Tax Info](#)

DOM = Days on Market, Occ. = Occupancy, FL = Floor Number