

Punahou Chalet 1521 Alexander Street Unit 905, Honolulu 96822 * \$489,000

Beds: 2	MLS#: 202402878, FS	Year Built: 1976
Bath: 2/0	Status: Active	Remodeled:
Living Sq. Ft.: 792	List Date & DOM: 02-16-2024 & 151	Total Parking: 1
Land Sq. Ft.: 13,634	Condition: Average, Fair	Assessed Value
Lanai Sq. Ft.: 198	Frontage: Other	Building: \$479,600
Sq. Ft. Other: 0	Tax/Year: \$153/2023	Land: \$44,100
Total Sq. Ft. 990	Neighborhood: Punahou	Total: \$523,700
Maint./Assoc. \$993 / \$0	Flood Zone : Zone X - Tool	Stories / CPR: One / No

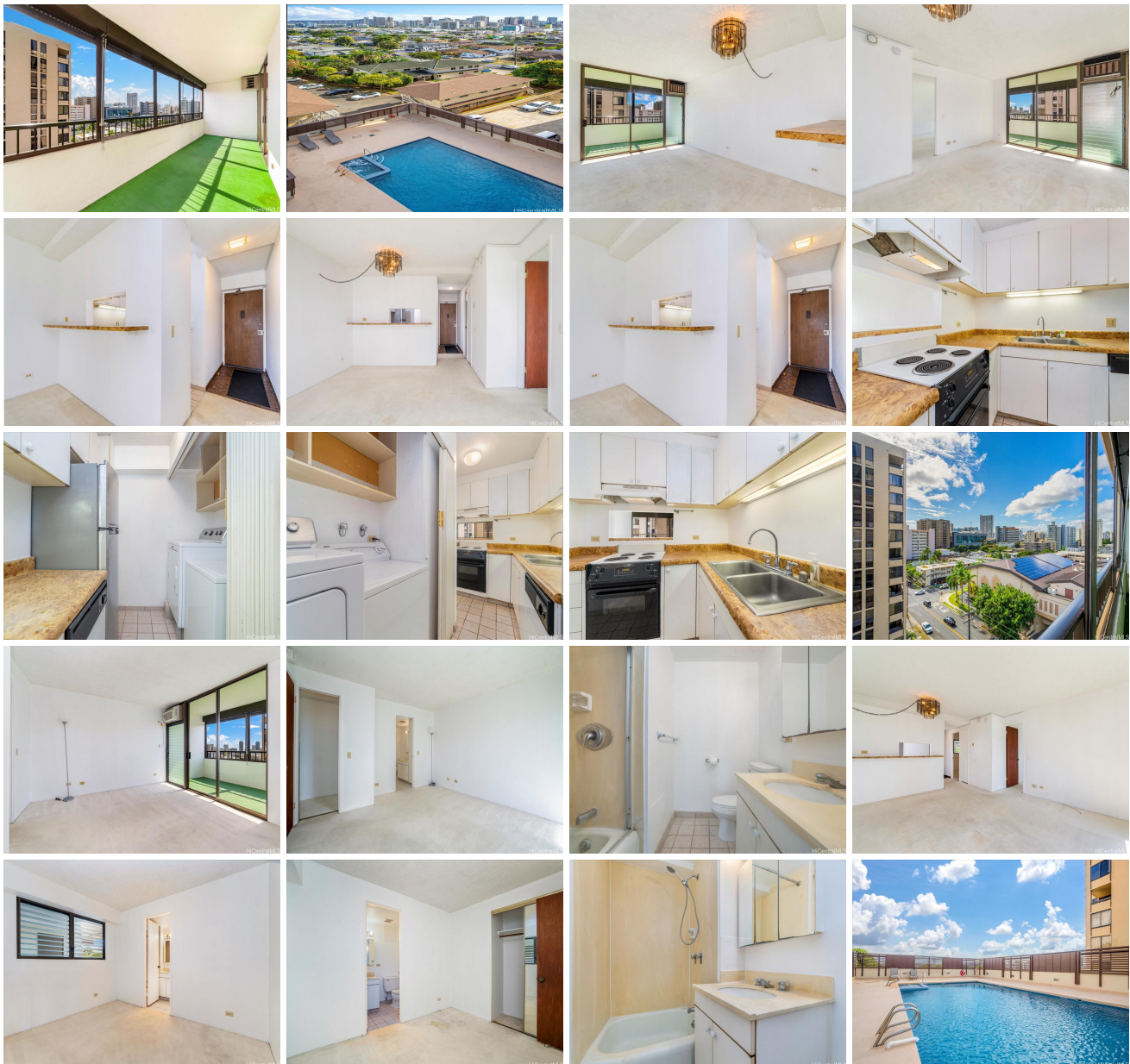
Parking: **Assigned, Covered - 1, Guest, Secured Entry**

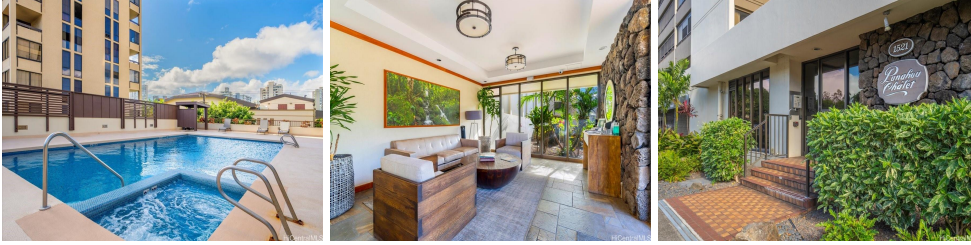
Frontage: **Other**

[Zoning](#): **13 - A-3 High Density Apartment**

View: **City, Diamond Head, Other**

Public Remarks: Makai facing unit with views of Diamond Head & city. Unit features a large lanai connecting the bedroom and living room. Rollup shutters can be completely closed to protect from heavy rains or partially closed to allow light in but reduce direct sun exposure. Unit is in original condition awaiting your personal touch! Prime location within close proximity to schools, shopping, freeway access, park and much more. **Sale Conditions:** None **Schools:** , , * [Request Showing](#), [Photos](#), [History](#), [Maps](#), [Deed](#), [Watch List](#), [Tax Info](#)





Address	Price	Bd & Bth	Living / Avg.	Land Avg.	DOM
1521 Alexander Street 905	\$489,000	2 & 2/0	792 \$617	13,634 \$36	151

Address	Tax Maint. Ass.	Assessed Land	Assessed Building	Assessed Total	Ratio	Year & Remodeled
1521 Alexander Street 905	\$153 \$993 \$0	\$44,100	\$479,600	\$523,700	93%	1976 & NA

[1521 Alexander Street 905](#) - MLS#: [202402878](#) - Makai facing unit with views of Diamond Head & city. Unit features a large lanai connecting the bedroom and living room. Rollup shutters can be completely closed to protect from heavy rains or partially closed to allow light in but reduce direct sun exposure. Unit is in original condition awaiting your personal touch! Prime location within close proximity to schools, shopping, freeway access, park and much more. **Region:** Metro **Neighborhood:** Punahou **Condition:** Average, Fair **Parking:** Assigned, Covered - 1, Guest, Secured Entry **Total Parking:** 1 **View:** City, Diamond Head, Other **Frontage:** Other **Pool:** **Zoning:** 13 - A-3 High Density Apartment **Sale Conditions:** None **Schools:** , , * [Request Showing](#), [Photos](#), [History](#), [Maps](#), [Deed](#), [Watch List](#), [Tax Info](#)

DOM = Days on Market