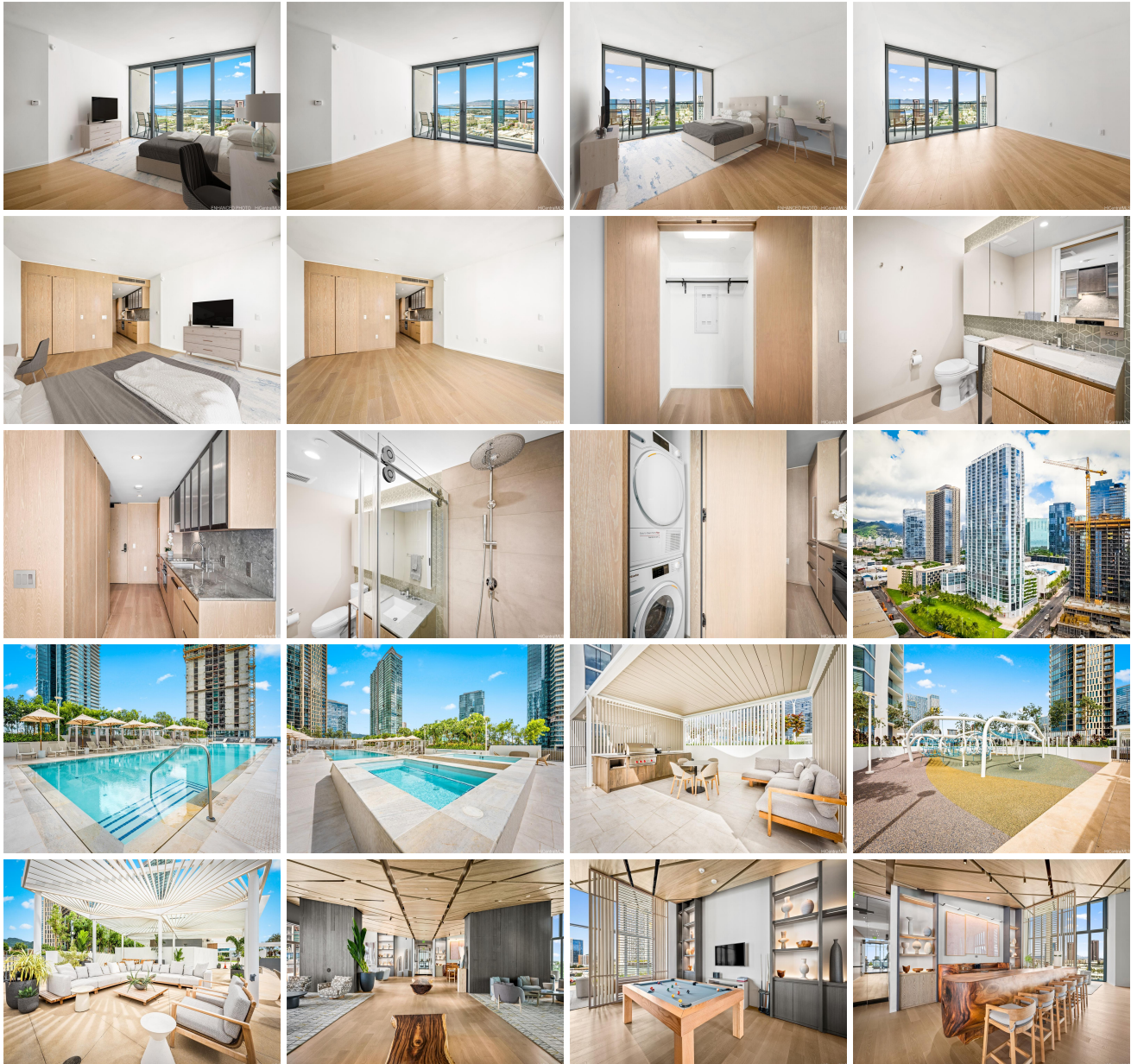


Koula 1000 Auahi Street Unit 3509, Honolulu 96814 * \$750,000 * Originally \$790,000

Beds: 0	MLS#: 202402946, FS	Year Built: 2021
Bath: 1/0	Status: Active	Remodeled:
Living Sq. Ft.: 435	List Date & DOM: 02-02-2024 & 165	Total Parking: 1
Land Sq. Ft.: 0	Condition: Excellent	Assessed Value
Lanai Sq. Ft.: 75	Frontage:	Building: \$691,500
Sq. Ft. Other: 0	Tax/Year: \$208/2023	Land: \$20,400
Total Sq. Ft. 510	Neighborhood: Kakaako	Total: \$711,900
Maint./Assoc. \$558 / \$27	Flood Zone : Zone AE - Tool	Stories / CPR: 21+ / No
Parking: Assigned, Covered - 1	Frontage:	
Zoning : Kak - Kakaako Community Development Project	View: City, Ocean	

Public Remarks: Discover unparalleled luxury at an extraordinary value in Honolulu's iconic Ward Village. This luxury residence promises a lifestyle of distinction at a fraction of the norm. Sunlight bathes the space through floor-to-ceiling windows, accentuating the open lanai's panoramic views of the ocean and city skyline. The newest condominium to open in Ward Village, Koula is like-new having just opened its doors in October of 2022. Immerse yourself in impeccable design featuring rich wood finishes and full-size appointments, including a sizable walk-in shower, expansive closet, and a cutting-edge Miele appliance suite. Convenience meets luxury with a washer and dryer, covered parking, and central AC enhancing your everyday comfort. Indulge in ultra-luxury living with exclusive amenities such as a grand lanai, executive dining room, state-of-the-art fitness center, inviting guest suites, and serene treatment rooms. Multiple socializing and relaxation areas redefine sophistication within the confines of your home. **Sale Conditions:** None **Schools:** , , * [Request Showing](#), [Photos](#), [History](#), [Maps](#), [Deed](#), [Watch List](#), [Tax Info](#)





Address	Price	Bd & Bth	Living / Avg.	Land Avg.	DOM
1000 Auahi Street 3509	\$750,000	0 & 1/0	435 \$1,724	0 \$inf	165

Address	Tax Maint. Ass.	Assessed Land	Assessed Building	Assessed Total	Ratio	Year & Remodeled
1000 Auahi Street 3509	\$208 \$558 \$27	\$20,400	\$691,500	\$711,900	105%	2021 & NA

[1000 Auahi Street 3509](#) - MLS#: [202402946](#) - Original price was \$790,000 - Discover unparalleled luxury at an extraordinary value in Honolulu's iconic Ward Village. This luxury residence promises a lifestyle of distinction at a fraction of the norm. Sunlight bathes the space through floor-to-ceiling windows, accentuating the open lanai's panoramic views of the ocean and city skyline. The newest condominium to open in Ward Village, Koula is like-new having just opened its doors in October of 2022. Immerse yourself in impeccable design featuring rich wood finishes and full-size appointments, including a sizable walk-in shower, expansive closet, and a cutting-edge Miele appliance suite. Convenience meets luxury with a washer and dryer, covered parking, and central AC enhancing your everyday comfort. Indulge in ultra-luxury living with exclusive amenities such as a grand lanai, executive dining room, state-of-the-art fitness center, inviting guest suites, and serene treatment rooms. Multiple socializing and relaxation areas redefine sophistication within the confines of your home. **Region:** Metro **Neighborhood:** Kakaako **Condition:** Excellent **Parking:** Assigned, Covered - 1 **Total Parking:** 1 **View:** City, Ocean **Frontage:** **Pool:** **Zoning:** Kak - Kakaako Community Development Project **Sale Conditions:** None **Schools:** , , * [Request Showing](#), [Photos](#), [History](#), [Maps](#), [Deed](#), [Watch List](#), [Tax Info](#)

DOM = Days on Market