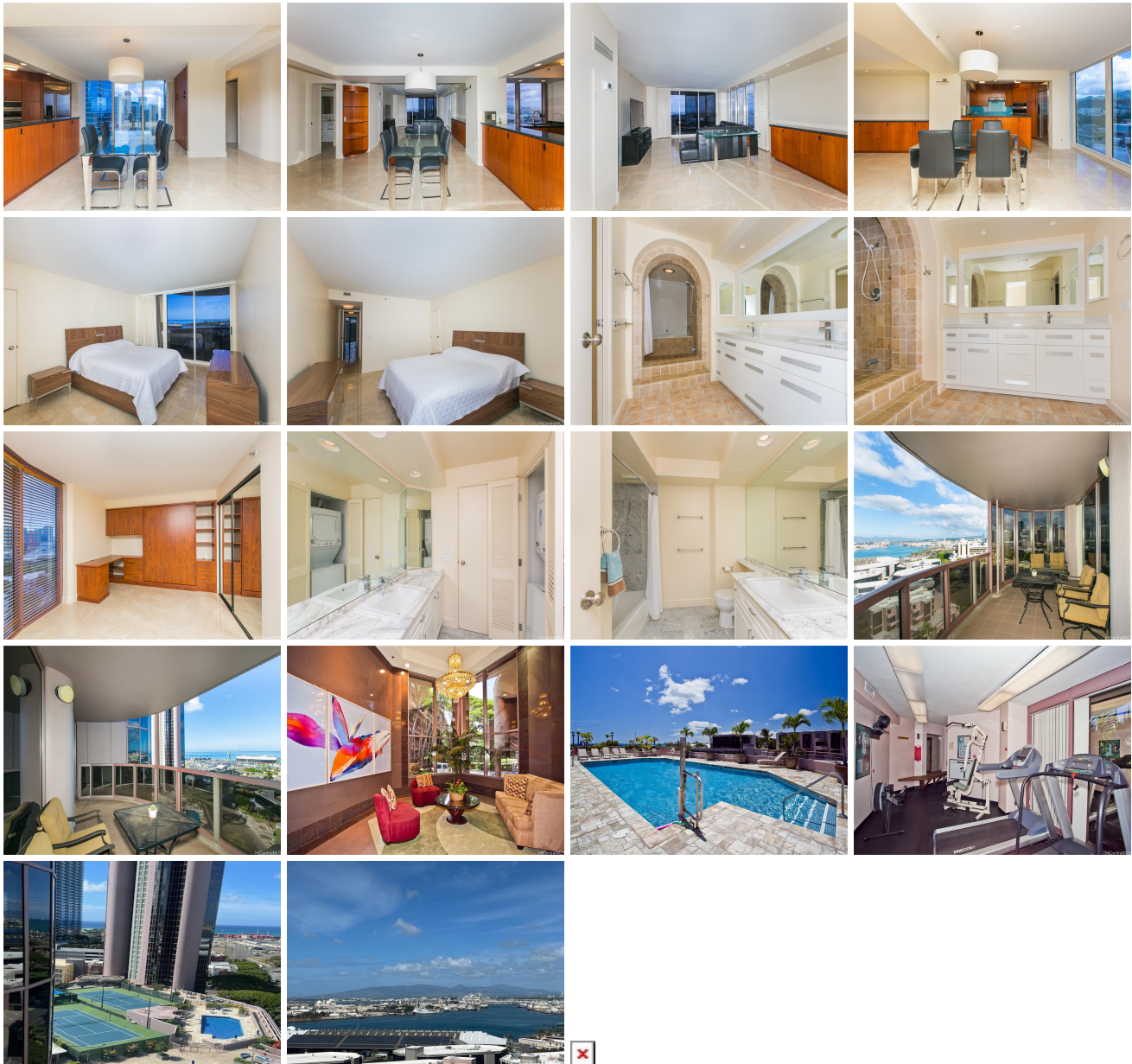


One Waterfront Tower 425 South Street Unit 1704, Honolulu 96813 * \$949,000 * Originally

\$969,000

Beds: 2 Bath: 2/0 Living Sq. Ft.: 1,470 Land Sq. Ft.: 106,548 Lanai Sq. Ft.: 155 Sq. Ft. Other: 0 Total Sq. Ft. 1,625 Maint./Assoc. \$1,975 / \$0 Parking: Covered - 2, Guest, Secured Entry Zoning: Kak - Kakaako Community Development Project	MLS#: 202402975, FS Status: Active List Date & DOM: 03-01-2024 & 121 Condition: Excellent Frontage: Other Tax/Year: \$241/2024 Neighborhood: Kakaako Flood Zone: Zone X - Tool	Year Built: 1989 Remodeled: 2013 Total Parking: 2 Assessed Value Building: \$732,500 Land: \$92,300 Total: \$824,800 Stories / CPR: 21+ / No Frontage: Other View: City, Coastline, Mountain, Ocean, Sunset
---------------------------------------------------------------------------------------------------------------------------------------------------------------------------------------------------------------------------------------------------------------------------------------------------------------------------------------------------	-----------------------------------------------------------------------------------------------------------------------------------------------------------------------------------------------------------------------------------------------------------------	-----------------------------------------------------------------------------------------------------------------------------------------------------------------------------------------------------------------------------------------------------------------------------------------------------------------------

Public Remarks: GREAT OPPORTUNITY, AND GREAT VALUE in Kaka'ako awaits you with the purchase of this 2 bedroom, 2 bathroom, 2 titled parking condominium at ONE WATERFRONT TOWER. Tastefully remodeled in 2013, this handsome condo has a beautiful kitchen, and gorgeous ceramic tile floors throughout the unit. A great view disposition, with spectacular harbor, ocean, mountain and city views. A large lanai for entertaining your guest and enjoying a sunset beverage. Situated at the far wet end of Kaka'ako, you can easily stroll Salt and Restaurant Row, and Whole Foods and Ward Village are nearby too. Unit is priced to sell! **Sale Conditions:** None **Schools:** [Royal](#), [Keelikolani](#), [Mckinley](#) * [Request Showing](#), [Photos](#), [History](#), [Maps](#), [Deed](#), [Watch List](#), [Tax Info](#)



Address	Price	Bd & Bth	Living / Avg.	Land Avg.	DOM
425 South Street 1704	\$949,000	2 & 2/0	1,470 \$646	106,548 \$9	121

Address	Tax Maint. Ass.	Assessed Land	Assessed Building	Assessed Total	Ratio	Year & Remodeled
425 South Street 1704	\$241 \$1,975 \$0	\$92,300	\$732,500	\$824,800	115%	1989 & 2013

[425 South Street 1704](#) - MLS#: [202402975](#) - Original price was \$969,000 - GREAT OPPORTUNITY, AND GREAT VALUE in Kaka'ako awaits you with the purchase of this 2 bedroom, 2 bathroom, 2 titled parking condominium at ONE WATERFRONT TOWER. Tastefully remodeled in 2013, this handsome condo has a beautiful kitchen, and gorgeous ceramic tile floors throughout the unit. A great view disposition, with spectacular harbor, ocean, mountain and city views. A large lanai for entertaining your guest and enjoying a sunset beverage. Situated at the far wet end of Kaka'ako, you can easily stroll Salt and Restaurant Row, and Whole Foods and Ward Village are nearby too. Unit is priced to sell! **Region:** Metro
Neighborhood: Kakaako **Condition:** Excellent **Parking:** Covered - 2, Guest, Secured Entry **Total Parking:** 2 **View:** City, Coastline, Mountain, Ocean, Sunset **Frontage:** Other **Pool:** **Zoning:** Kak - Kakaako Community Development Project **Sale Conditions:** None **Schools:** [Royal](#), [Keelikolani](#), [Mckinley](#) * [Request Showing](#), [Photos](#), [History](#), [Maps](#), [Deed](#), [Watch List](#), [Tax Info](#)

DOM = Days on Market