

**Pacifica Honolulu 1009 Kapiolani Boulevard Unit 2009, Honolulu 96814 \* Pacifica Honolulu**

**\* \$755,000**

Beds: **1**  
Bath: **1/0**  
Living Sq. Ft.: **727**  
Land Sq. Ft.: **0**  
Lanai Sq. Ft.: **0**  
Sq. Ft. Other: **0**  
Total Sq. Ft. **727**  
Maint./Assoc. **\$816 / \$0**

MLS#: **202402984, FS**  
Status: **Active**  
List Date & DOM: **02-14-2024 & 154**  
Condition: **Above Average**  
Frontage:  
Tax/Year: **\$187/2023**  
Neighborhood: **Kakaako**  
**Flood Zone: Zone X - Tool**

Year Built: **2011**  
Remodeled:  
Total Parking: **1**  
[Assessed Value](#)  
Building: **\$692,900**  
Land: **\$48,100**  
Total: **\$741,000**  
Stories / CPR: **21+ / No**

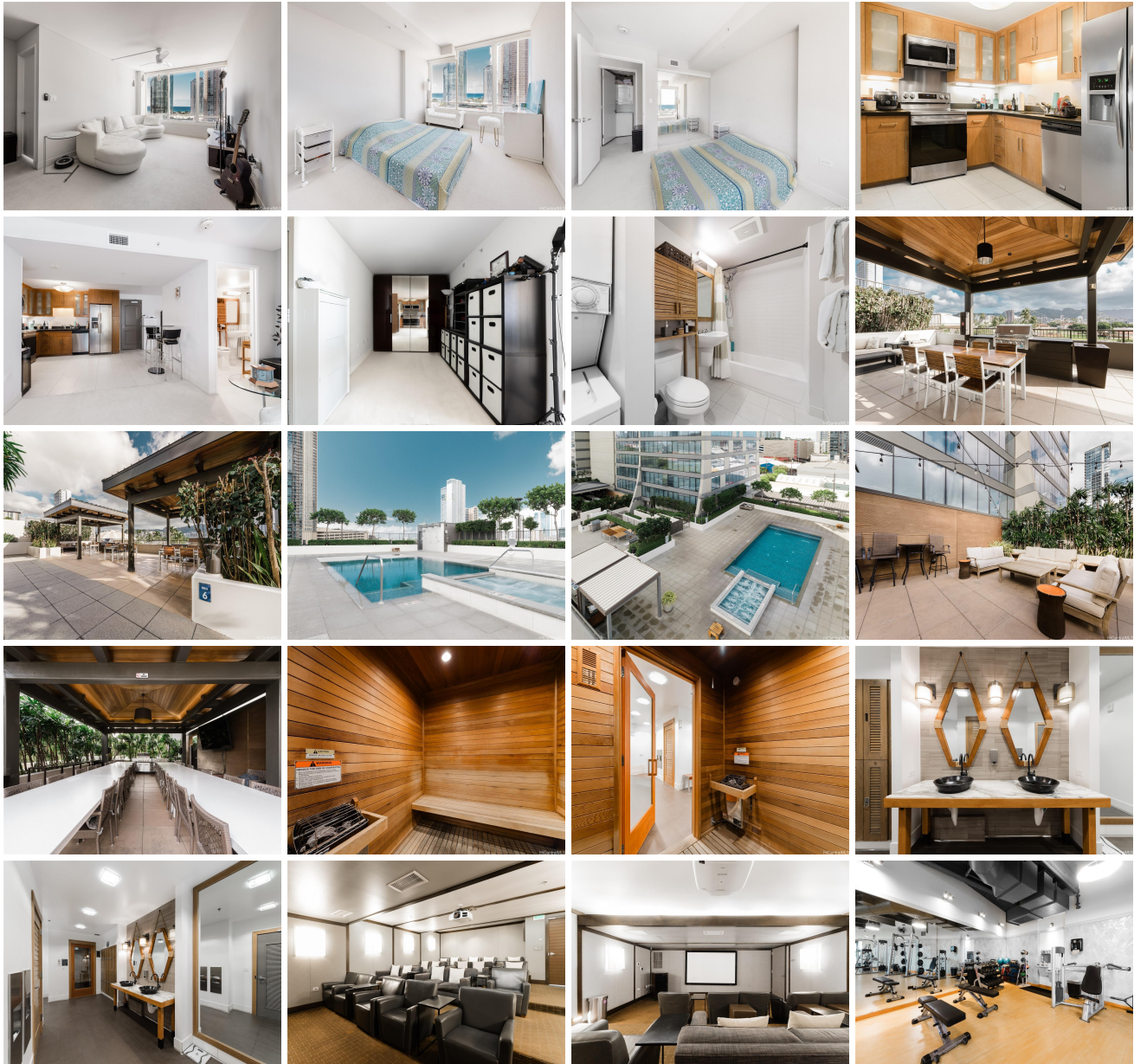
Parking: **Assigned, Covered - 1, Secured Entry**

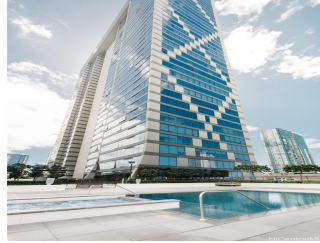
Frontage:

**Zoning: Kak - Kakaako Community Development Project**

View: **City, Ocean, Sunset**

**Public Remarks:** Make your new home here at the Pacifica Honolulu. This beautiful 1 bed, 1 bath apartment is on the 20th floor and in the middle of all the action! Want to enjoy the ocean? Ala Moana Beach is close by. Want to shop or take in a movie? Ward village is a double blocks away. Want to take in a show or concert? The Neal Blaisdell Center is across the street. Want some fine dining? Chef Chai's and Daroku Sushi are on the first floor! This amazing apartment comes with ocean and city views, access to a pool, hot tub, saunas, bbq pits, lounging area and private gym. There is even a "pet friendly park" for you animal lovers out there! This Unit also comes with its own dedicated cover parking in a secure parking structure. Don't wait Make an appointment to visit today! **Sale Conditions:** None **Schools:** [Kaahumanu](#), [Stevenson](#), [Mckinley](#) \* [Request Showing](#), [Photos](#), [History](#), [Maps](#), [Deed](#), [Watch List](#), [Tax Info](#)





| Address                                       | Price                     | Bd & Bth | Living / Avg. | Land   Avg. | Lanai | Occ. | FL | DOM |
|---|---------------------------|----------|---------------|-------------|-------|------|----|-----|
| <a href="#">1009 Kapiolani Boulevard 2009</a> | <a href="#">\$755,000</a> | 1 & 1/0  | 727   \$1,039 | 0   \$inf   | 0     | 55%  | 20 | 154 |

| Address                                       | Tax   Maint.   Ass. | Assessed Land | Assessed Building | Assessed Total | Ratio | Year & Remodeled |
|---|---------------------|---------------|-------------------|----------------|-------|------------------|
| <a href="#">1009 Kapiolani Boulevard 2009</a> | \$187   \$816   \$0 | \$48,100      | \$692,900         | \$741,000      | 102%  | 2011 & NA        |

[1009 Kapiolani Boulevard 2009](#) - MLS#: [202402984](#) - Make your new home here at the Pacifica Honolulu. This beautiful 1 bed, 1 bath apartment is on the 20th floor and in the middle of all the action! Want to enjoy the ocean? Ala Moana Beach is close by. Want to shop or take in a movie? Ward village is a double blocks away. Want to take in a show or concert? The Neal Blaisdell Center is across the street. Want some fine dining? Chef Chai's and Daroku Sushi are on the first floor! This amazing apartment comes with ocean and city views, access to a pool, hot tub, saunas, bbq pits, lounging area and private gym. There is even a "pet friendly park" for you animal lovers out there! This Unit also comes with its own dedicated cover parking in a secure parking structure. Don't wait Make an appointment to visit today! **Region:** Metro **Neighborhood:** Kakaako **Condition:** Above Average **Parking:** Assigned, Covered - 1, Secured Entry **Total Parking:** 1 **View:** City, Ocean, Sunset **Frontage:** Pool: **Zoning:** Kak - Kakaako Community Development Project **Sale Conditions:** None **Schools:** [Kaahumanu](#), [Stevenson](#), [Mckinley](#) \* [Request Showing](#), [Photos](#), [History](#), [Maps](#), [Deed](#), [Watch List](#), [Tax Info](#)

DOM = Days on Market, Occ. = Occupancy, FL = Floor Number