

Trump Tower Waikiki 223 Saratoga Road Unit 1213, Honolulu 96815 * \$1,150,000 *

Originally \$1,500,000

Beds: **1**
Bath: **1/1**
Living Sq. Ft.: **1,128**
Land Sq. Ft.: **0**
Lanai Sq. Ft.: **154**
Sq. Ft. Other: **0**
Total Sq. Ft. **1,282**
Maint./Assoc. **\$2,043 / \$0**
Parking: **Other**

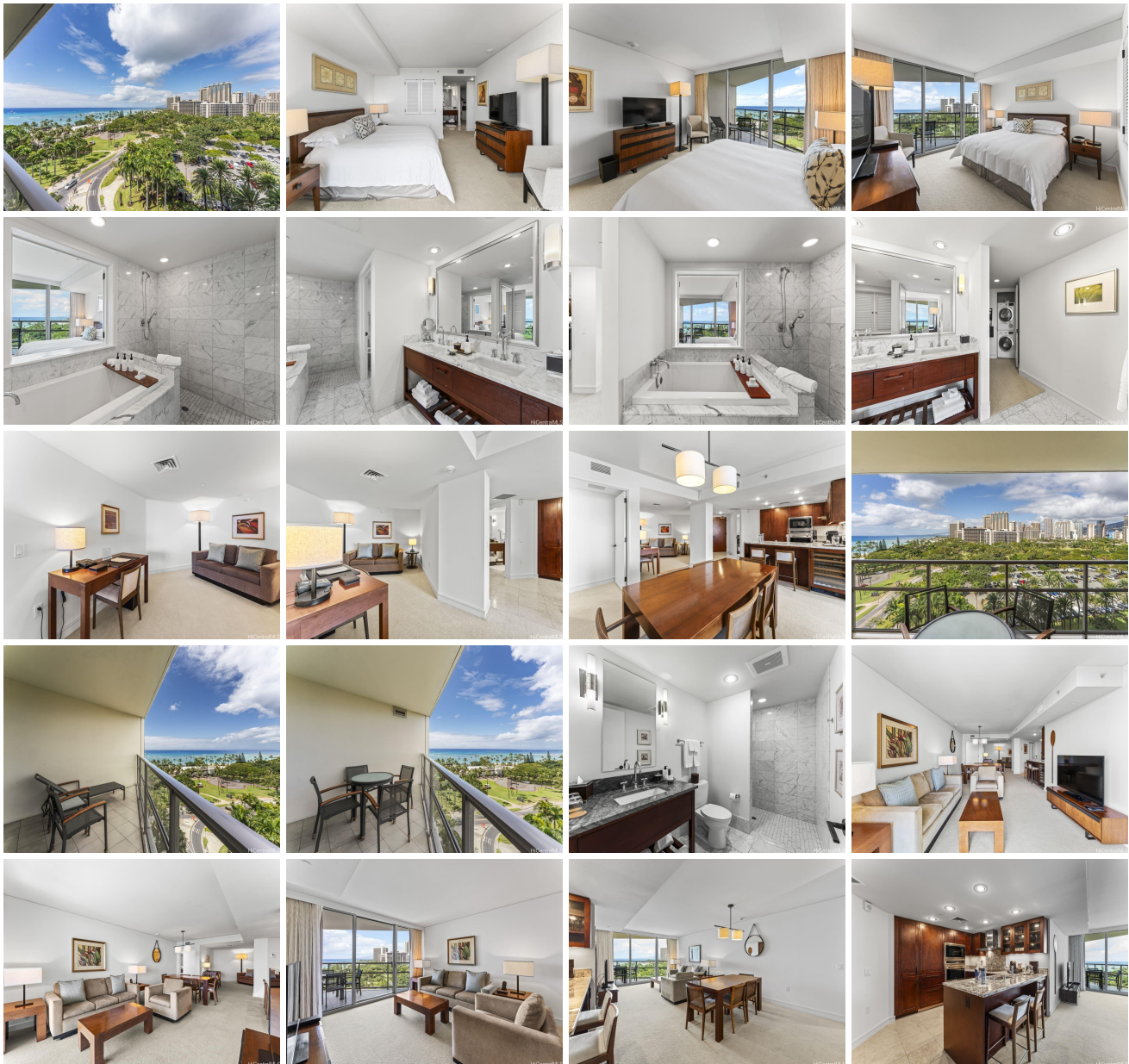
MLS#: **202402998, FS**
Status: **Active**
List Date & DOM: **02-03-2024 & 165**
Condition: **Excellent**
Frontage:
Tax/Year: **\$1,779/2024**
Neighborhood: **Waikiki**
Flood Zone: Zone AE - Tool

Year Built: **2009**
Remodeled:
Total Parking: **0**
Assessed Value
Building: **\$888,500**
Land: **\$647,200**
Total: **\$1,535,700**
Stories / CPR: **21+ / No**

Zoning: X6 - Resort Mixed Use Precinct

Frontage:
View: City, Ocean

Public Remarks: Enjoy luxury living at Ka La'i Waikiki Beach, LXR Hotels & Resorts Hotel/Condo! (former Trump International Hotel Waikiki) This 1 bedroom unit comes fully furnished with all linens & Kitchenware and City and Mountain View! Top notch amenities include infinity pool, concierge, valet parking and a full service spa. Including in purchase are upscale appliances, granite counter tops and travertine tile flooring. Steps away from Waikiki's famous white sand beaches. **Sale Conditions:** None **Schools:** , , * [Request Showing](#), [Photos](#), [History](#), [Maps](#), [Deed](#), [Watch List](#), [Tax Info](#)





Address	Price	Bd & Bth	Living / Avg.	Land Avg.	DOM
223 Saratoga Road 1213	\$1,150,000	1 & 1/1	1,128 \$1,020	0 \$inf	165

Address	Tax Maint. Ass.	Assessed Land	Assessed Building	Assessed Total	Ratio	Year & Remodeled
223 Saratoga Road 1213	\$1,779 \$2,043 \$0	\$647,200	\$888,500	\$1,535,700	75%	2009 & NA

[223 Saratoga Road 1213](#) - MLS#: [202402998](#) - Original price was \$1,500,000 - Enjoy luxury living at Ka La'i Waikiki Beach, LXR Hotels & Resorts Hotel/Condo! (former Trump International Hotel Waikiki) This 1 bedroom unit comes fully furnished with all linens & Kitchenware and City and Mountain View! Top notch amenities include infinity pool, concierge, valet parking and a full service spa. Including in purchase are upscale appliances, granite counter tops and travertine tile flooring. Steps away from Waikiki's famous white sand beaches. **Region:** Metro **Neighborhood:** Waikiki **Condition:** Excellent **Parking:** Other **Total Parking:** 0 **View:** City, Ocean **Frontage:** **Pool:** **Zoning:** X6 - Resort Mixed Use Precinct **Sale Conditions:** None **Schools:** , , * [Request Showing](#), [Photos](#), [History](#), [Maps](#), [Deed](#), [Watch List](#), [Tax Info](#)

DOM = Days on Market