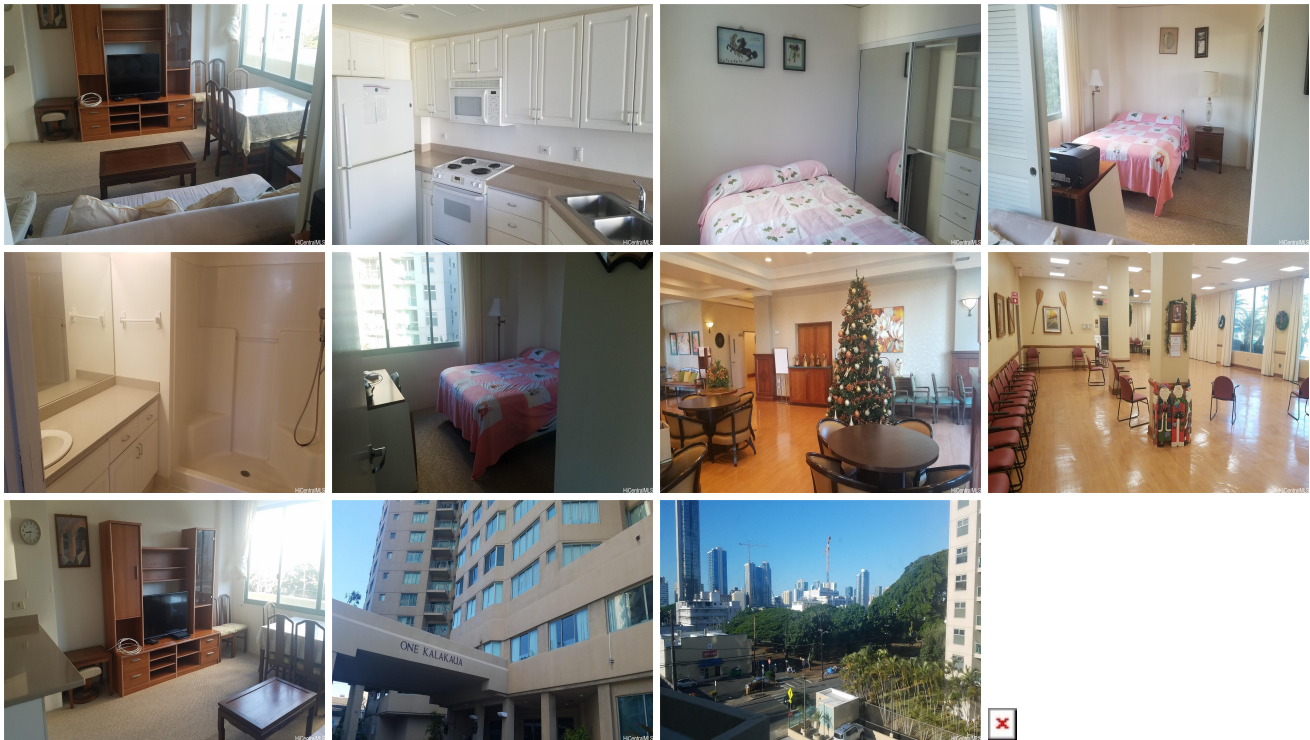


**One Kalakaua Senior Living 1314 Kalakaua Avenue Unit 304, Honolulu 96826 \* \$328,000**

Beds: <b>2</b>	MLS#: <b>202403186, FS</b>	Year Built: <b>1996</b>
Bath: <b>1/0</b>	Status: <b>Active</b>	Remodeled:
Living Sq. Ft.: <b>709</b>	List Date & DOM: <b>02-07-2024 &amp; 160</b>	Total Parking: <b>1</b>
Land Sq. Ft.: <b>51,575</b>	Condition: <b>Average</b>	<a href="#">Assessed Value</a>
Lanai Sq. Ft.: <b>0</b>	Frontage:	Building: <b>\$538,100</b>
Sq. Ft. Other: <b>0</b>	Tax/Year: <b>\$142/2023</b>	Land: <b>\$59,000</b>
Total Sq. Ft. <b>709</b>	Neighborhood: <b>Makiki Area</b>	Total: <b>\$597,100</b>
Maint./Assoc. <b>\$1,216 / \$2,255</b>	<a href="#">Flood Zone</a> : <b>Zone X - Tool</b>	Stories / CPR: <b>15-20 / No</b>
Parking: <b>Assigned, Covered - 1</b>	Frontage:	
<a href="#">Zoning</a> : <b>33 - BMX-3 Community Business M</b>	View: <b>None</b>	

**Public Remarks:** One Kalakaua Senior Living offers various programs for seniors. Excellent facilities and security. Best location with easy access to freeway. Close to Ala Moana Mall, Park, 10 min drive to Waikiki. Building amenities include private dining, swimming pool, whirlpool, weekly house keeping service. Price is below tax assessment value. **Sale Conditions:** None **Schools:** , , \* [Request Showing](#), [Photos](#), [History](#), [Maps](#), [Deed](#), [Watch List](#), [Tax Info](#)



Address	Price	Bd & Bth	Living / Avg.	Land   Avg.	DOM
<a href="#">1314 Kalakaua Avenue 304</a>	<a href="#">\$328,000</a>	2 & 1/0	709   \$463	51,575   \$6	160

Address	Tax   Maint.   Ass.	Assessed Land	Assessed Building	Assessed Total	Ratio	Year & Remodeled
<a href="#">1314 Kalakaua Avenue 304</a>	\$142   \$1,216   \$2,255	\$59,000	\$538,100	\$597,100	55%	1996 & NA

[1314 Kalakaua Avenue 304](#) - MLS#: [202403186](#) - One Kalakaua Senior Living offers various programs for seniors. Excellent facilities and security. Best location with easy access to freeway. Close to Ala Moana Mall, Park, 10 min drive to Waikiki. Building amenities include private dining, swimming pool, whirlpool, weekly house keeping service. Price is below tax assessment value. **Region:** Metro **Neighborhood:** Makiki Area **Condition:** Average **Parking:** Assigned, Covered - 1 **Total Parking:** 1 **View:** None **Frontage:** **Pool:** **Zoning:** 33 - BMX-3 Community Business M **Sale Conditions:** None **Schools:** , , \* [Request Showing](#), [Photos](#), [History](#), [Maps](#), [Deed](#), [Watch List](#), [Tax Info](#)

DOM = Days on Market