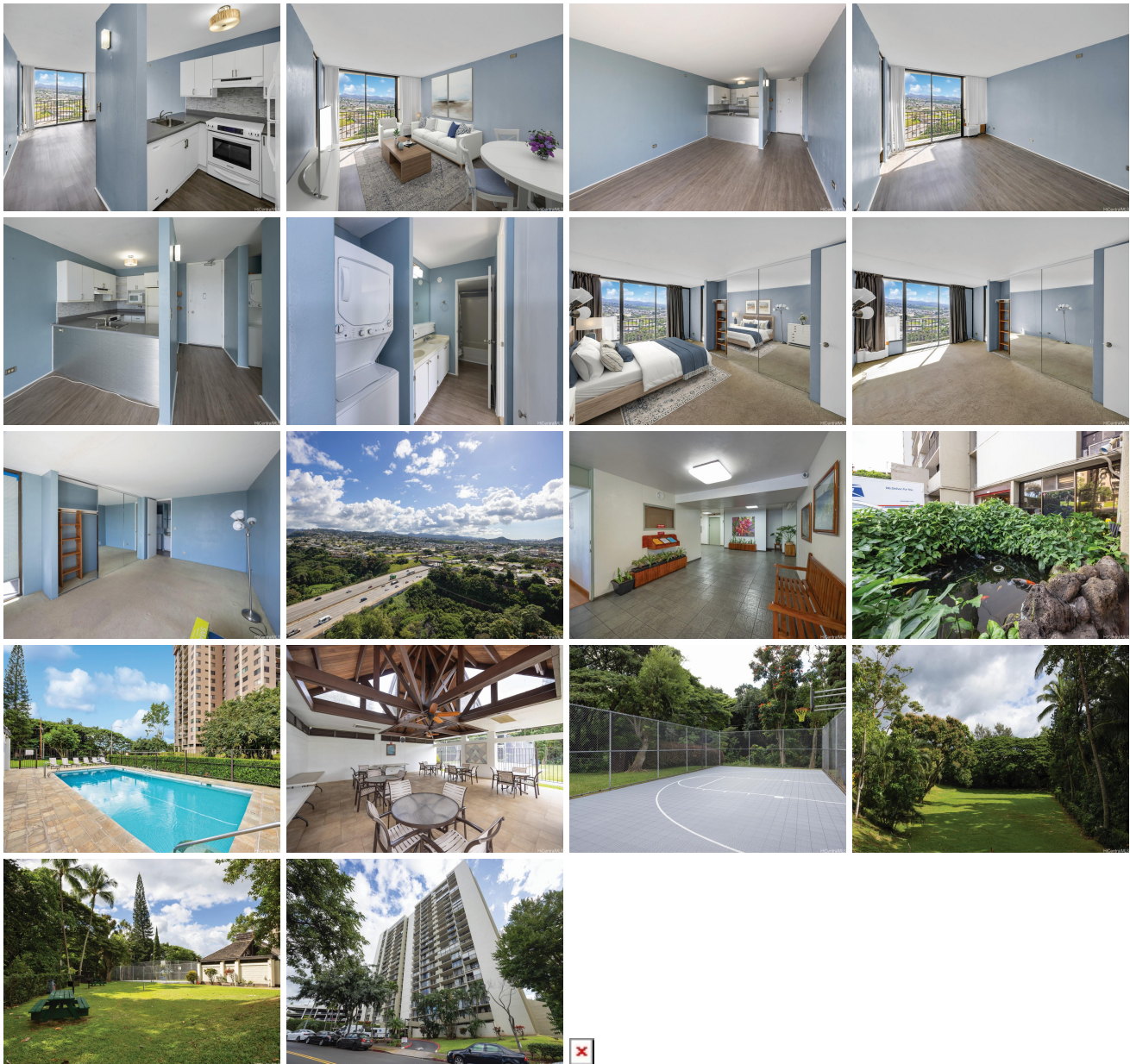


**Pearl 1 98-500 Koauka Loop Unit 23C, Aiea 96701 \* Pearl 1 \* \$395,000 \* Originally \$420,000**

Beds: <b>1</b>	MLS#: <b>202403191, FS</b>	Year Built: <b>1975</b>
Bath: <b>1/0</b>	Status: <b>Active</b>	Remodeled:
Living Sq. Ft.: <b>605</b>	List Date & DOM: <b>02-21-2024 &amp; 147</b>	Total Parking: <b>1</b>
Land Sq. Ft.: <b>365,904</b>	Condition: <b>Average</b>	<a href="#">Assessed Value</a>
Lanai Sq. Ft.: <b>157</b>	Frontage: <b>Other</b>	Building: <b>\$251,200</b>
Sq. Ft. Other: <b>0</b>	Tax/Year: <b>\$80/2024</b>	Land: <b>\$143,100</b>
Total Sq. Ft. <b>762</b>	Neighborhood: <b>Pearlridge</b>	Total: <b>\$394,300</b>
Maint./Assoc. <b>\$609 / \$0</b>	<a href="#">Flood Zone</a> : <b>Zone AE - Tool</b>	Stories / CPR: <b>21+ / No</b>
Parking: <b>Covered - 1, Guest</b>	Frontage: <b>Other</b>	
<a href="#">Zoning</a> : <b>12 - A-2 Medium Density Apartme</b>	View: <b>City, Mountain, Sunrise</b>	

**Public Remarks:** This spacious top-floor, one-bedroom unit at Pearl 1 offers stunning views overlooking Pearl Country Club and all the way to Diamond Head. The extra large bedroom features a large 3-door closet, while the bathroom boasts dual sinks. The unit also includes a washer/dryer and two A/C window units. The Seller has already completed some upgrades to the unit, including new vinyl plank flooring in the living room. Additionally, vinyl flooring for the primary bedroom is being conveyed with the property. Pearl 1 is a well-maintained building with excellent amenities such as BBQ areas, a pool, a car wash, a resident manager, and a new pickleball court! The grounds are beautifully maintained, and the location is convenient, nestled in the Koauka Loop neighborhood near Pearlridge Shopping Center. This unit is currently vacant and ready for the buyer to add their finishing touches. Don't miss the opportunity to make this Pearl 1 unit your own! One or more photos have been enhanced. **Sale Conditions:** None **Schools:** [Alvah Scott](#), [Aiea](#), [Aiea](#) \* [Request Showing](#), [Photos](#), [History](#), [Maps](#), [Deed](#), [Watch List](#), [Tax Info](#)



Address	Price	Bd & Bth	Living / Avg.	Land   Avg.	Lanai	Occ.	FL	DOM
<a href="#">98-500 Koauka Loop 23C</a>	<b>\$395,000</b>	1 & 1/0	605   \$653	365,904   \$1	157	52%	23	147

Address	Tax   Maint.   Ass.	Assessed Land	Assessed Building	Assessed Total	Ratio	Year & Remodeled
<a href="#">98-500 Koauka Loop 23C</a>	\$80   \$609   \$0	\$143,100	\$251,200	\$394,300	100%	1975 & NA

[98-500 Koauka Loop 23C](#) - MLS#: [202403191](#) - Original price was \$420,000 - This spacious top-floor, one-bedroom unit at Pearl 1 offers stunning views overlooking Pearl Country Club and all the way to Diamond Head. The extra large bedroom features a large 3-door closet, while the bathroom boasts dual sinks. The unit also includes a washer/dryer and two A/C window units. The Seller has already completed some upgrades to the unit, including new vinyl plank flooring in the living room. Additionally, vinyl flooring for the primary bedroom is being conveyed with the property. Pearl 1 is a well-maintained building with excellent amenities such as BBQ areas, a pool, a car wash, a resident manager, and a new pickleball court! The grounds are beautifully maintained, and the location is convenient, nestled in the Koauka Loop neighborhood near Pearlridge Shopping Center. This unit is currently vacant and ready for the buyer to add their finishing touches. Don't miss the opportunity to make this Pearl 1 unit your own! One or more photos have been enhanced. **Region:** Pearl City  
**Neighborhood:** Pearlridge **Condition:** Average **Parking:** Covered - 1, Guest **Total Parking:** 1 **View:** City, Mountain, Sunrise **Frontage:** Other **Pool:** **Zoning:** 12 - A-2 Medium Density Apartme **Sale Conditions:** None **Schools:** [Alvah Scott, Aiea, Aiea](#) \* [Request Showing](#), [Photos](#), [History](#), [Maps](#), [Deed](#), [Watch List](#), [Tax Info](#)

DOM = Days on Market, Occ. = Occupancy, FL = Floor Number