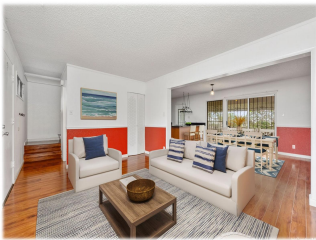


**Ridgeway C 98-885 Iho Place Unit B, Aiea 96701 \* Ridgeway C \* \$650,000 \* Originally \$690,000**

Beds: <b>3</b>	MLS#: <b>202403283, FS</b>	Year Built: <b>1971</b>
Bath: <b>1/1</b>	Status: <b>Active</b>	Remodeled:
Living Sq. Ft.: <b>1,136</b>	List Date & DOM: <b>02-08-2024 &amp; 141</b>	Total Parking: <b>2</b>
Land Sq. Ft.: <b>493,012</b>	Condition: <b>Above Average</b>	<a href="#">Assessed Value</a>
Lanai Sq. Ft.: <b>120</b>	Frontage:	Building: <b>\$206,200</b>
Sq. Ft. Other: <b>0</b>	Tax/Year: <b>\$176/2023</b>	Land: <b>\$396,200</b>
Total Sq. Ft. <b>1,256</b>	Neighborhood: <b>Pearlridge</b>	Total: <b>\$602,400</b>
Maint./Assoc. <b>\$608 / \$0</b>	<a href="#">Flood Zone</a> : <b>Zone D - Tool</b>	Stories / CPR: <b>Two / No</b>
Parking: <b>Assigned, Open - 2</b>	Frontage:	
<a href="#">Zoning</a> : <b>11 - A-1 Low Density Apartment</b>	View: <b>Garden</b>	

**Public Remarks:** Ultra-Charming Two-Story Townhouse with Expansive Open Green Space Directly Behind the Unit! Enjoy second floor views of Pearl Harbor from this 3BR/1.5BA, 1,100+sqft residence affords quick access to desirable nearby conveniences, such as freeway access, shopping, dining and parks. Bursting with natural light, the updated interior features gleaming wood floors, an openly flowing layout, decorative chair rails, powder room, and a welcoming living room. Beautifully refreshed for modern needs, the open concept kitchen impresses with a stainless-steel refrigerator and dishwasher, glass top range, stylish countertops, breakfast bar, and an adjoining dining area. Venture outdoors to discover a fenced-in yard and a covered lanai. The upper-level primary bedroom features a private balcony and direct access to a full bathroom. Other considerations include a community pool, two assigned side-by-side parking spaces (steps from front door), in-unit laundry, and more! \*\*\*Numerous renovations just completed, including a brand new stainless steel dishwasher, new pull-out kitchen faucet, security bars removed from windows and doors, etc. Come and take another look! **Sale Conditions:** None **Schools:** , \* [Request Showing](#), [Photos](#), [History](#), [Maps](#), [Deed](#), [Watch List](#), [Tax Info](#)



Address	Price	Bd & Bth	Living / Avg.	Land   Avg.	Lanai	Occ.	FL	DOM
<a href="#">98-885 Iho Place B</a>	<b>\$650,000</b>	3 & 1/1	1,136   \$572	493,012   \$1	120	73%	1	141

Address	Tax   Maint.   Ass.	Assessed Land	Assessed Building	Assessed Total	Ratio	Year & Remodeled
<a href="#">98-885 Iho Place B</a>	\$176   \$608   \$0	\$396,200	\$206,200	\$602,400	108%	1971 & NA

[98-885 Iho Place B](#) - MLS#: [202403283](#) - Original price was \$690,000 - Ultra-Charming Two-Story Townhouse with Expansive Open Green Space Directly Behind the Unit! Enjoy second floor views of Pearl Harbor from this 3BR/1.5BA, 1,100+sqft residence affords quick access to desirable nearby conveniences, such as freeway access, shopping, dining and parks. Bursting with natural light, the updated interior features gleaming wood floors, an openly flowing layout, decorative chair rails, powder room, and a welcoming living room. Beautifully refreshed for modern needs, the open concept kitchen impresses with a stainless-steel refrigerator and dishwasher, glass top range, stylish countertops, breakfast bar, and an adjoining dining area. Venture outdoors to discover a fenced-in yard and a covered lanai. The upper-level primary bedroom features a private balcony and direct access to a full bathroom. Other considerations include a community pool, two assigned side-by-side parking spaces (steps from front door), in-unit laundry, and more! \*\*\*Numerous renovations just completed, including a brand new stainless steel dishwasher, new pull-out kitchen faucet, security bars removed from windows and doors, etc. Come and take another look! **Region:** Pearl City **Neighborhood:** Pearlridge **Condition:** Above Average **Parking:** Assigned, Open - 2 **Total Parking:** 2 **View:** Garden **Frontage:** **Pool:** **Zoning:** 11 - A-1 Low Density Apartment **Sale Conditions:** None **Schools:** , \* [Request Showing](#), [Photos](#), [History](#), [Maps](#), [Deed](#), [Watch List](#), [Tax Info](#)

DOM = Days on Market, Occ. = Occupancy, FL = Floor Number