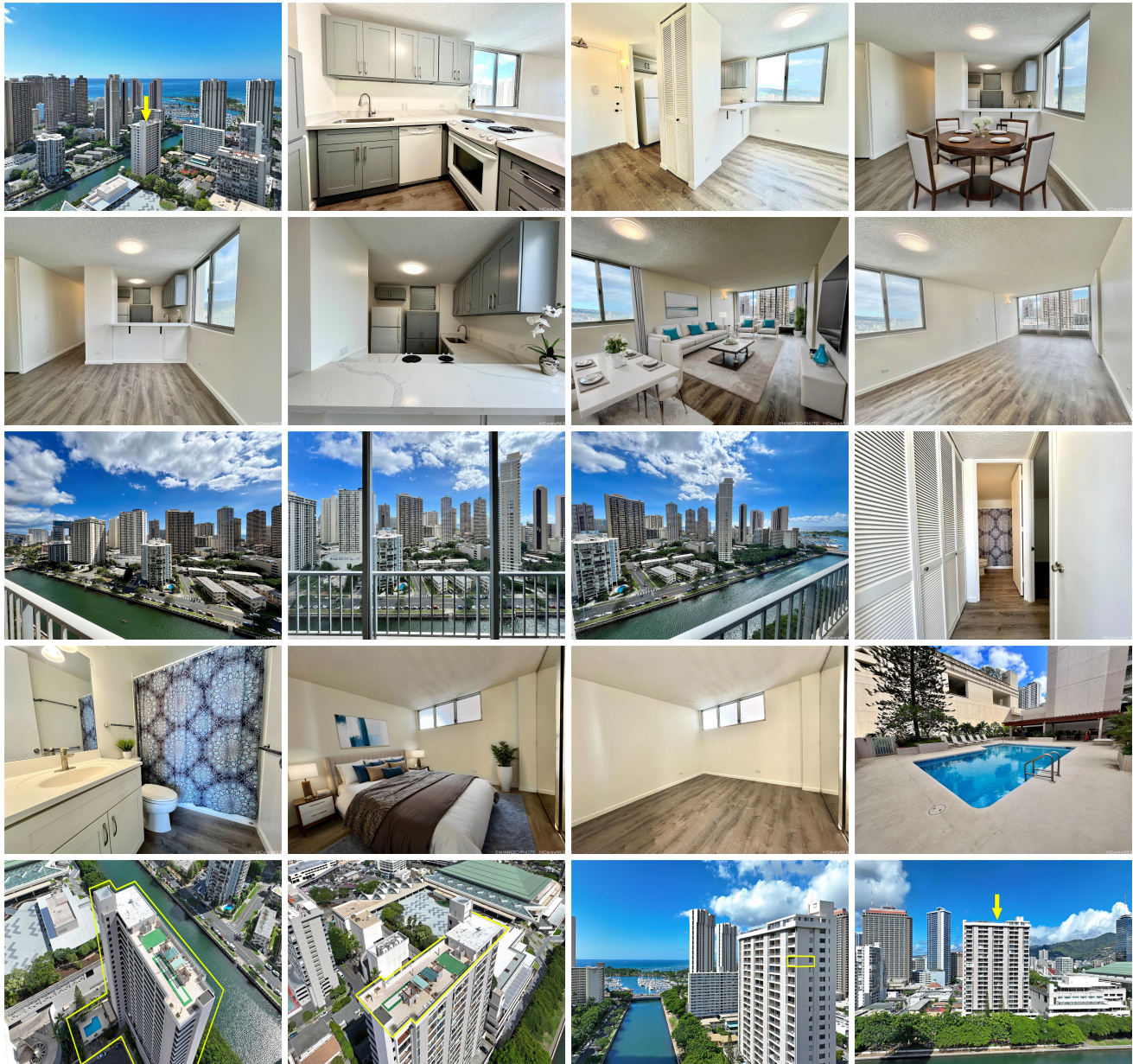


Summer Palace 1848 Kahakai Drive Unit 2101, Honolulu 96814 * \$515,000

Beds: 1	MLS#: 202403325, FS	Year Built: 1976
Bath: 1/0	Status: Active	Remodeled: 2024
Living Sq. Ft.: 648	List Date & DOM: 02-12-2024 & 131	Total Parking: 1
Land Sq. Ft.: 0	Condition: Excellent, Above Average	Assessed Value
Lanai Sq. Ft.: 0	Frontage:	Building: \$488,000
Sq. Ft. Other: 0	Tax/Year: \$153/2023	Land: \$35,900
Total Sq. Ft. 648	Neighborhood: Ala Moana	Total: \$523,900
Maint./Assoc. \$848 / \$0	Flood Zone : Zone AE - Tool	Stories / CPR: / No
Parking: Assigned, Covered - 1, Garage, Guest, Secured Entry, Street	Frontage:	
Zoning : 12 - A-2 Medium Density Apartme	View: City, Coastline, Marina/Canal, Ocean	

Public Remarks: Welcome to SUMMER PALACE! This 1-bedroom 1-bathroom with 1 parking corner unit has been recently renovated. Some updates include a new kitchen, quartz countertops, a large sink, fresh paint, lighting, and much more. This condo is located in a prime location with easy access from the building to the jogging paths, Magic Island, Ala Moana Beach Park, Ala Moana Shopping Center, Waikiki, and many restaurants. A secured building with lots of guest parking and remote access to your parking garage. Enjoy the rooftop deck and take in the views of the ocean, Waikiki, and Kakaako skylines. Invite friends to enjoy the pool and BBQ area on the 3rd floor. This building is pet friendly (verify) and the maintenance fees include electricity, sewer, water, hot water, wifi, and internet. Contact your agent and schedule a private showing today! **Sale Conditions:** None **Schools:** , , * [Request Showing](#), [Photos](#), [History](#), [Maps](#), [Deed](#), [Watch List](#), [Tax Info](#)





Address	Price	Bd & Bth	Living / Avg.	Land Avg.	DOM
1848 Kahakai Drive 2101	\$515,000	1 & 1/0	648 \$795	0 \$inf	131

Address	Tax Maint. Ass.	Assessed Land	Assessed Building	Assessed Total	Ratio	Year & Remodeled
1848 Kahakai Drive 2101	\$153 \$848 \$0	\$35,900	\$488,000	\$523,900	98%	1976 & 2024

[1848 Kahakai Drive 2101](#) - MLS#: [202403325](#) - Welcome to SUMMER PALACE! This 1-bedroom 1-bathroom with 1 parking corner unit has been recently renovated. Some updates include a new kitchen, quartz countertops, a large sink, fresh paint, lighting, and much more. This condo is located in a prime location with easy access from the building to the jogging paths, Magic Island, Ala Moana Beach Park, Ala Moana Shopping Center, Waikiki, and many restaurants. A secured building with lots of guest parking and remote access to your parking garage. Enjoy the rooftop deck and take in the views of the ocean, Waikiki, and Kakaako skylines. Invite friends to enjoy the pool and BBQ area on the 3rd floor. This building is pet friendly (verify) and the maintenance fees include electricity, sewer, water, hot water, wifi, and internet. Contact your agent and schedule a private showing today! **Region:** Metro **Neighborhood:** Ala Moana **Condition:** Excellent, Above Average **Parking:** Assigned, Covered - 1, Garage, Guest, Secured Entry, Street **Total Parking:** 1 **View:** City, Coastline, Marina/Canal, Ocean **Frontage:** **Pool:** **Zoning:** 12 - A-2 Medium Density Apartme **Sale Conditions:** None **Schools:** , , * [Request Showing](#), [Photos](#), [History](#), [Maps](#), [Deed](#), [Watch List](#), [Tax Info](#)

DOM = Days on Market