

Lele Pono 98-099 Uao Place Unit 1801, Aiea 96701 * Lele Pono * \$528,000

Beds: **2**
Bath: **2/0**
Living Sq. Ft.: **792**
Land Sq. Ft.: **0**

Lanai Sq. Ft.: **144**
Sq. Ft. Other: **0**
Total Sq. Ft. **936**
Maint./Assoc. **\$731 / \$0**

MLS#: **202403683, FS**
Status: **Active**
List Date & DOM: **05-31-2024 & 45**
Condition: **Excellent, Above Average**
Frontage:
Tax/Year: **\$117/2024**
Neighborhood: **Pearlridge**
Flood Zone: **Zone X - Tool**

Year Built: **1976**
Remodeled:
Total Parking: **2**
[Assessed Value](#)
Building: **\$444,200**
Land: **\$47,800**
Total: **\$492,000**
Stories / CPR: / **No**

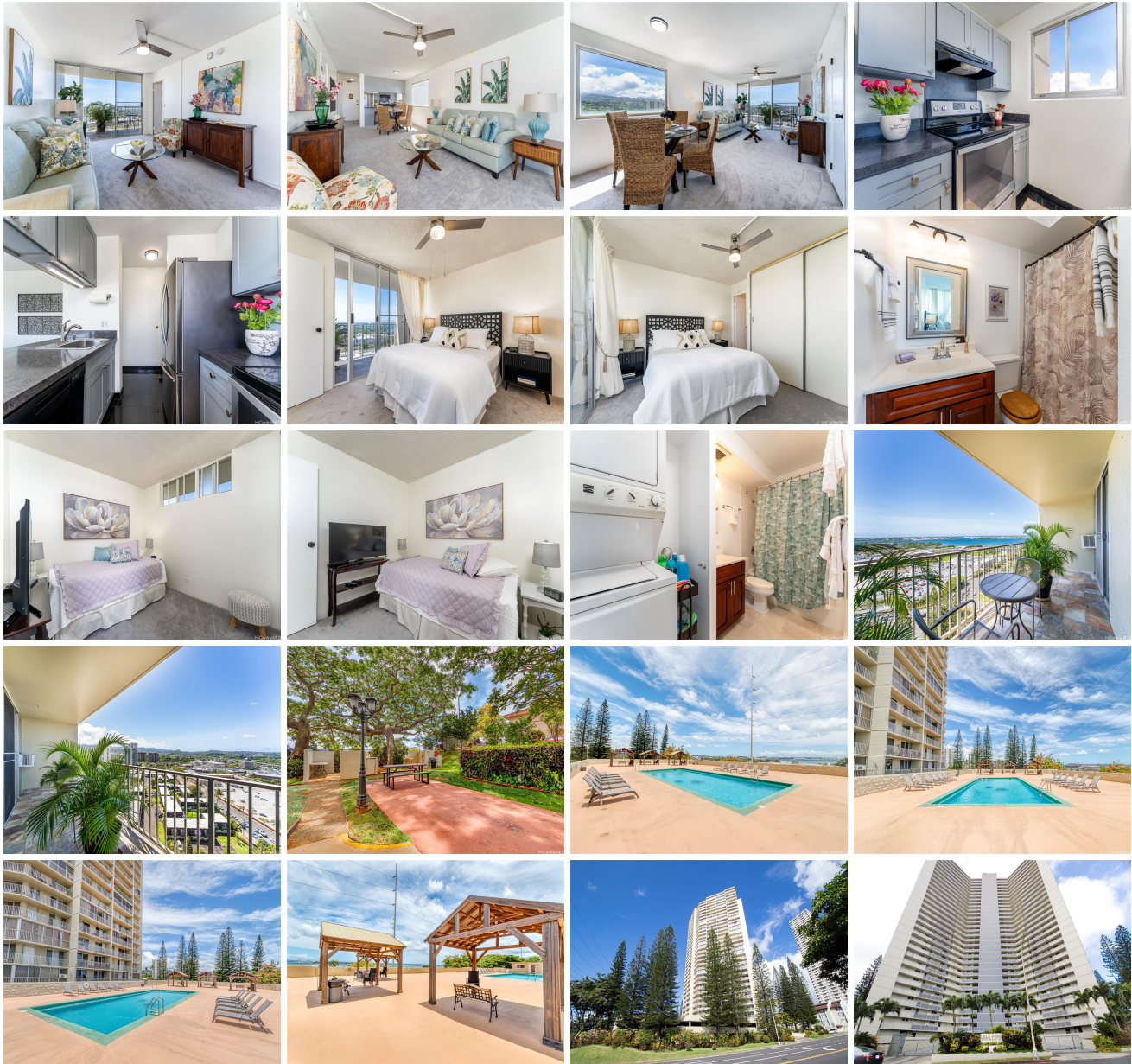
Parking: **Assigned, Covered - 2, Guest, Secured Entry**

Frontage:

Zoning: **12 - A-2 Medium Density Apartme**

View: **City, Mountain, Ocean**

Public Remarks: NEW LISTING!! Enjoy spectacular ocean, city and mountain views from this 2 bdrm/2 bath CORNER/END unit with 2 COVERED parking in Lele Pono. This well-maintained unit features an updated open floor plan, recently painted interior and a nice covered lanai where you can enjoy the amazing views and cool breezes! Enjoy natural maximum light provided by the additional window from this corner unit. Conveniently located just minutes from Pearlridge Center with ample shopping, restaurants, and entertainment! Don't miss this incredible opportunity! **Sale Conditions:** None **Schools:** [Pearl Ridge](#), [Aiea](#), [Aiea](#) * [Request Showing](#), [Photos](#), [History](#), [Maps](#), [Deed](#), [Watch List](#), [Tax Info](#)





Address	Price	Bd & Bth	Living / Avg.	Land Avg.	Lanai	Occ.	FL	DOM
98-099 Uao Place 1801	\$528,000	2 & 2/0	792 \$667	0 \$inf	144	49%	17	45

Address	Tax Maint. Ass.	Assessed Land	Assessed Building	Assessed Total	Ratio	Year & Remodeled
98-099 Uao Place 1801	\$117 \$731 \$0	\$47,800	\$444,200	\$492,000	107%	1976 & NA

[98-099 Uao Place 1801](#) - MLS#: [202403683](#) - NEW LISTING!! Enjoy spectacular ocean, city and mountain views from this 2 bdrm/2 bath CORNER/END unit with 2 COVERED parking in Lele Pono. This well-maintained unit features an updated open floor plan, recently painted interior and a nice covered lanai where you can enjoy the amazing views and cool breezes! Enjoy natural maximum light provided by the additional window from this corner unit. Conveniently located just minutes from Pearlridge Center with ample shopping, restaurants, and entertainment! Don't miss this incredible opportunity! **Region:** Pearl City **Neighborhood:** Pearlridge **Condition:** Excellent, Above Average **Parking:** Assigned, Covered - 2, Guest, Secured Entry **Total Parking:** 2 **View:** City, Mountain, Ocean **Frontage:** **Pool:** **Zoning:** 12 - A-2 Medium Density Apartme **Sale Conditions:** None **Schools:** [Pearl Ridge](#), [Aiea](#), [Aiea](#) * [Request Showing](#), [Photos](#), [History](#), [Maps](#), [Deed](#), [Watch List](#), [Tax Info](#)

DOM = Days on Market, Occ. = Occupancy, FL = Floor Number