

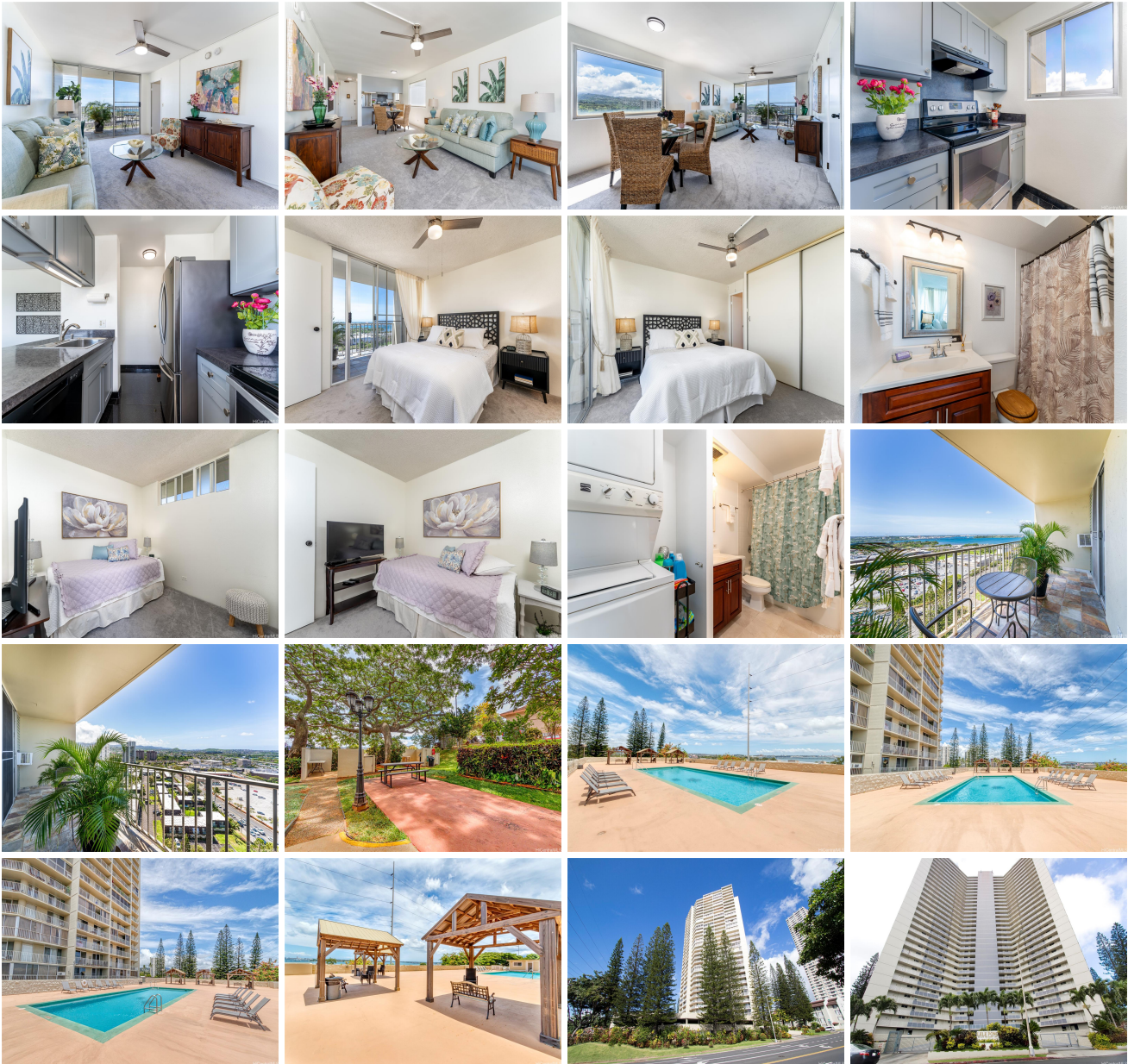
**Lele Pono 98-099 Uao Place Unit 1801, Aiea 96701 \* \$528,000**

Beds: <b>2</b>	MLS#: <b>202403683, FS</b>	Year Built: <b>1976</b>
Bath: <b>2/0</b>	Status: <b>Active</b>	Remodeled:
Living Sq. Ft.: <b>792</b>	List Date & DOM: <b>05-31-2024 &amp; 47</b>	Total Parking: <b>2</b>
Land Sq. Ft.: <b>0</b>	Condition: <b>Excellent, Above Average</b>	<a href="#">Assessed Value</a>
Lanai Sq. Ft.: <b>144</b>	Frontage:	Building: <b>\$444,200</b>
Sq. Ft. Other: <b>0</b>	Tax/Year: <b>\$117/2024</b>	Land: <b>\$47,800</b>
Total Sq. Ft. <b>936</b>	Neighborhood: <b>Pearlridge</b>	Total: <b>\$492,000</b>
Maint./Assoc. <b>\$731 / \$0</b>	<a href="#">Flood Zone</a> : <b>Zone X - Tool</b>	Stories / CPR: / <b>No</b>
Parking: <b>Assigned, Covered - 2, Guest, Secured Entry</b>	Frontage:	

[Zoning](#): **12 - A-2 Medium Density Apartme**

View: **City, Mountain, Ocean**

**Public Remarks:** NEW LISTING!! Enjoy spectacular ocean, city and mountain views from this 2 bdrm/2 bath CORNER/END unit with 2 COVERED parking in Lele Pono. This well-maintained unit features an updated open floor plan, recently painted interior and a nice covered lanai where you can enjoy the amazing views and cool breezes! Enjoy natural maximum light provided by the additional window from this corner unit. Conveniently located just minutes from Pearlridge Center with ample shopping, restaurants, and entertainment! Don't miss this incredible opportunity! **Sale Conditions:** None **Schools:** [Pearl Ridge, Aiea, Aiea](#) \* [Request Showing](#), [Photos](#), [History](#), [Maps](#), [Deed](#), [Watch List](#), [Tax Info](#)





Address	Price	Bd & Bth	Living / Avg.	Land   Avg.	DOM
<a href="#">98-099 Uao Place 1801</a>	<a href="#">\$528,000</a>	2 & 2/0	792   \$667	0   \$inf	47

Address	Tax   Maint.   Ass.	Assessed Land	Assessed Building	Assessed Total	Ratio	Year & Remodeled
<a href="#">98-099 Uao Place 1801</a>	\$117   \$731   \$0	\$47,800	\$444,200	\$492,000	107%	1976 & NA

[98-099 Uao Place 1801](#) - MLS#: [202403683](#) - NEW LISTING!! Enjoy spectacular ocean, city and mountain views from this 2 bdrm/2 bath CORNER/END unit with 2 COVERED parking in Lele Pono. This well-maintained unit features an updated open floor plan, recently painted interior and a nice covered lanai where you can enjoy the amazing views and cool breezes! Enjoy natural maximum light provided by the additional window from this corner unit. Conveniently located just minutes from Pearlridge Center with ample shopping, restaurants, and entertainment! Don't miss this incredible opportunity! **Region:** Pearl City **Neighborhood:** Pearlridge **Condition:** Excellent, Above Average **Parking:** Assigned, Covered - 2, Guest, Secured Entry **Total Parking:** 2 **View:** City, Mountain, Ocean **Frontage:** **Pool:** **Zoning:** 12 - A-2 Medium Density Apartme **Sale Conditions:** None **Schools:** [Pearl Ridge](#), [Aiea](#), [Aiea](#) \* [Request Showing](#), [Photos](#), [History](#), [Maps](#), [Deed](#), [Watch List](#), [Tax Info](#)

DOM = Days on Market